

Raspberry Pi Camera Case

No screws, no glue – just add your *Raspberry Pi* Camera!

- Designed to house the *Pi Camera* via clip-in grooves - **NO SCREWS REQUIRED!**
- All cut-outs are pre-cut into the case - **NO MODS REQUIRED!**
- Wall mountable
- High **Gloss Finish**

Material:

- Thickness 3mm: HB Rated
- Coloured Materials: High Impact Polystyrene (HIPS)
- Carbon Fibre Finish: Acrylic Capped ABS



Available in a range of colours: **Gloss Finish**

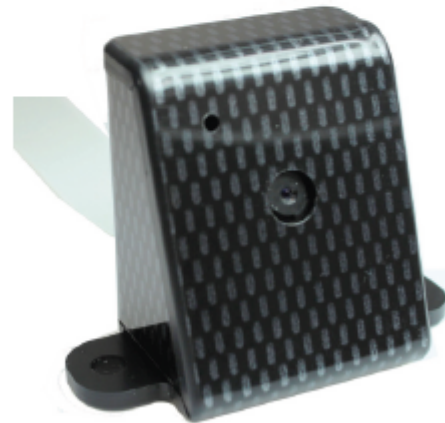


White

Black

*Carbon Fibre

* Carbon fibre finish: Acrylic capped ABS



RS Stock No.	Description
784-6190	Raspberry Pi Camera Case, White
784-6193	Raspberry Pi Camera Case, Black
784-6197	Raspberry Pi Camera Case, Carbon Fibre

Raspberry Pi Camera not included