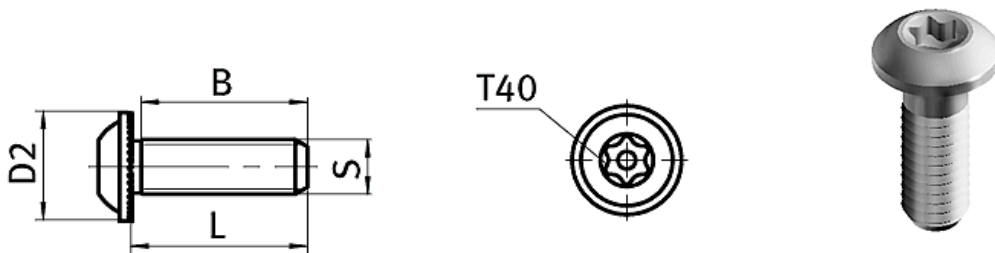




Self Forming Screw

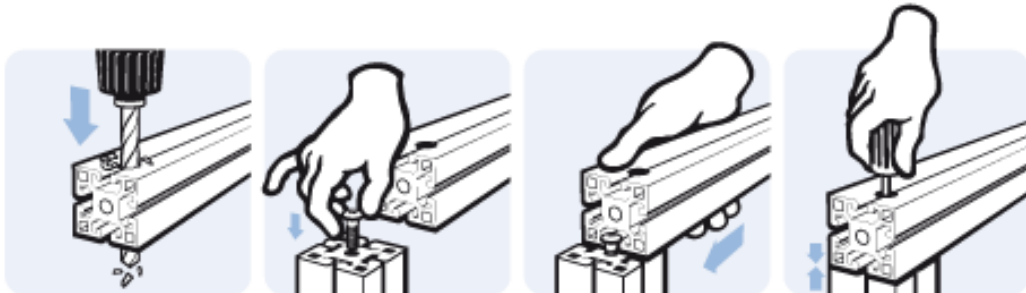
With Torx

Description *To connect two aluminum profiles; no thread cutter is necessary to fix the screw; because of the special form of the head of the screw and the self-forming thread, a conductive connection of two aluminum profiles is achieved*



Dimensions

RS Article no.	Material	S x L (mm)	B (mm)	D2 (mm)	Weight (g)
7675822	Zinc plated steel	S7 x 25	23	15.5	11



RS Article no.	Product Description	Compatible with groove size	Product system	Structural element type
7675822	Self tapping screw, S7x25	6 / 8	30 / 40	Fixing & Connection element