



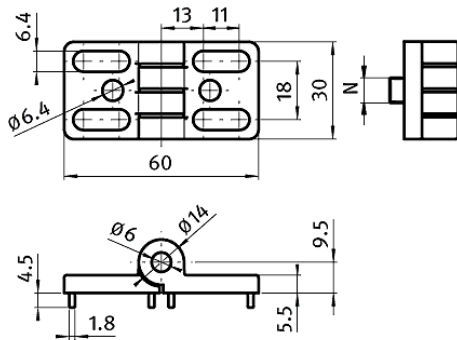
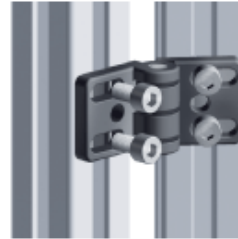
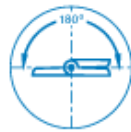
Die-cast Zinc Hinge with Oblong Holes Non-detachable

Description: To hinge panel for aluminium profiles

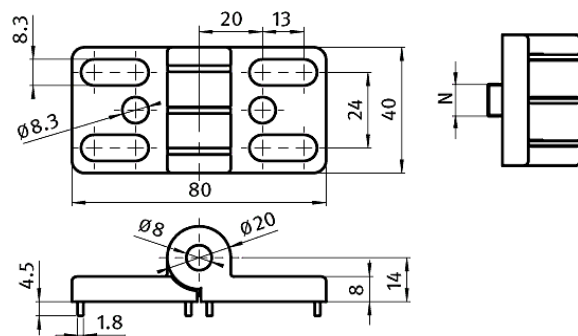
Material: Wings: Die-cast zinc

Pin: Stainless steel

Surface: Black powder coated

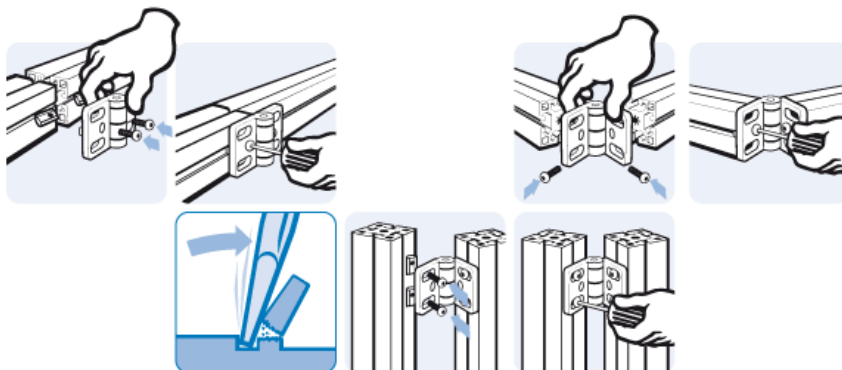


30



40

RS Article no.	N	Fastening	Weight (g)	FA max (N)	FR max (N)
7675768	8	M8	175	500	1200
7675585	6	M6	68.6	350	1000



RS Article no.	Product Description	Compatible with groove size	Product system	Structural element type
7675768	Metal Hinge, 40x80mm, slot 8, black	8	40	Hinge
7675585	Metal Hinge, 30x60mm, slot 6, black	6	30	Hinge