



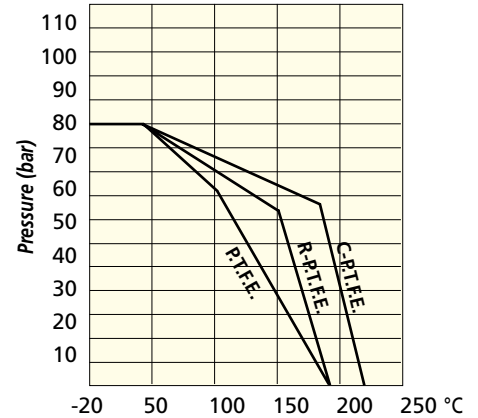
# Stainless Steel Ball Valve with Electric Actuator

**1,000 PSI Rated**

## Materials

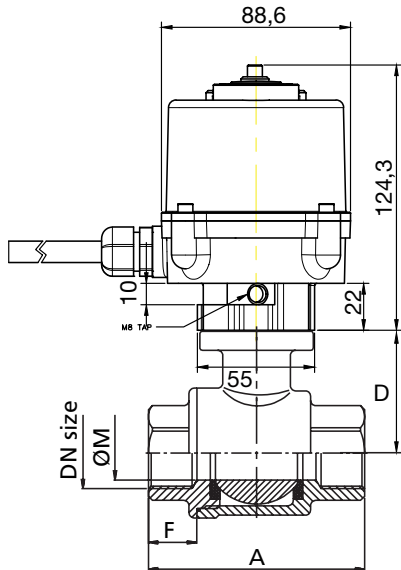
Body = CF8M - 316 S/S  
 Ball = 316 S/S  
 Stem Seal = PTFE  
 Ball Seal = PTFE

Pressure - Temperature Diagram



## Standard Specifications

Enclosure Rated Weather proof IP67  
 Motor 24V DC Motor  
 Supplying Voltage Multi-Voltage(85~265VAC or 24VDC)  
 Limit Switches 2 x open/close SPDT, 250 VAC 6A rating  
 Auxiliary Limit Switches 2 x open/close SPDT, 250 VAC 6A rating  
 Torque Switch N/A  
 Travel Angle 90 degree  
 Indicator LED lamp Indicator(Open/Close)  
 Heater N/A  
 Manual Override Push Button with Manual lever  
 Conduit Entries 1 X PG11 with 3m flying lead. 11 wires  
 Ambient Temperature -20 ~ + 60  
 External Coating Polyester Powder Coating  
 Base and Bore ISO5211(F03/04/05) & 11mm Double Square



Model	Max. Torque (Nm)	Rated Current			Electric Motor Stop	Operating time	Bore Size	Base (ISO5211)
		110VAC	220VAC	24VDC				
HQ-003	30	0.12A	0.06A	0.46A	2.0A	12sec	11mm Star	F03/04/05

## Overall Dimensions - Spring Return

RS Part No.	Dia mm	Size ins.	Model	A	D	F	ØM
	8	1/4"	HQ-003	65	36	9.6	11
	10	3/8"	HQ-003	65	36	9.6	12.7
	15	1/2"	HQ-003	65	38	12	15
	20	3/4"	HQ-003	74.5	41.7	19	20
	25	1"	HQ-003	88.5	44.4	19.5	25
	32	1 1/4"	HQ-003	102	54	20.3	32
	40	1 1/2"	HQ-003	110	59.5	24.5	40
	50	2"	HQ-003	125	67	29	50