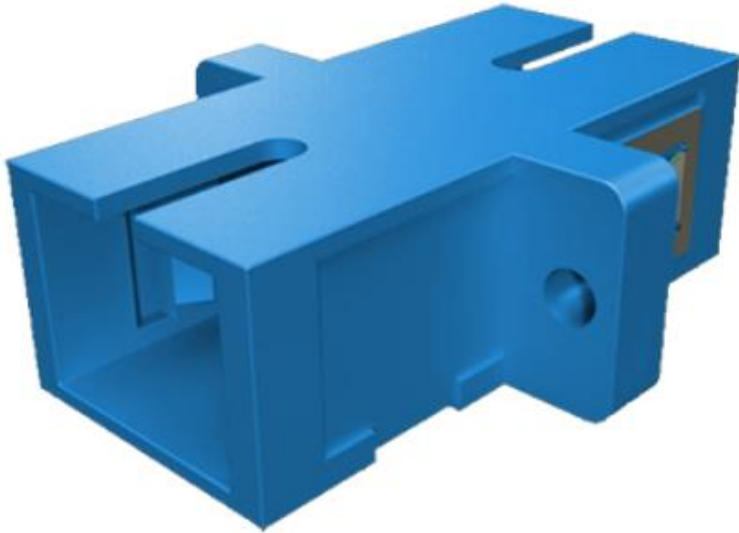


**Professionally approved products.**

## Datasheet SC Adaptors

RS Stock number [536-7651](#)



### Description:

Our range of high quality SC adaptors have high precision alignment sleeves for reliability and improved reconnectability. For singlemode applications a ceramic sleeve is supplied to ensure a high precision alignment. For multimode applications a phosphor bronze sleeve is supplied. The housing is available in different colours with options for flange or flangeless body, metal clips or inbuilt clips.

### Specifications:

	<b>Ceramic</b>	<b>Phosphor Bronze</b>	<b>Conformance</b>
Insertion Loss (typ)	0.1dB	0.15dB	IEC 61300-3-4
Mating Durability	-	500	IEC 61300-2-2
Receptacle retention force	-	2N-5.9N	IEC 61754-4
Operating Temperature	-	-25 to +70, cycles	IEC 61300-2-22

## **Professionally approved products. Datasheet**

### **Features:**

- Complies with IEC 61754-4 standard
- High precision alignment sleeve
- Blue, green, aqua and Erika violet adaptors supplied with zirconia ceramic sleeve
- Beige adaptor supplied with phosphor bronze sleeve
- Low insertion loss and improved reconnectability
- REACH SvHC compliant
- Materials compliant to RoHS2
- Available in simplex and duplex adaptors
- Available in flanged and flangeless options
- Also available are SC simplex adaptors with a shutter

### **Applications:**

- Data centres
- Premise installations
- Telecommunication networks
- Ethernet, fibre channel, ATM, LAN, MAN and WAN