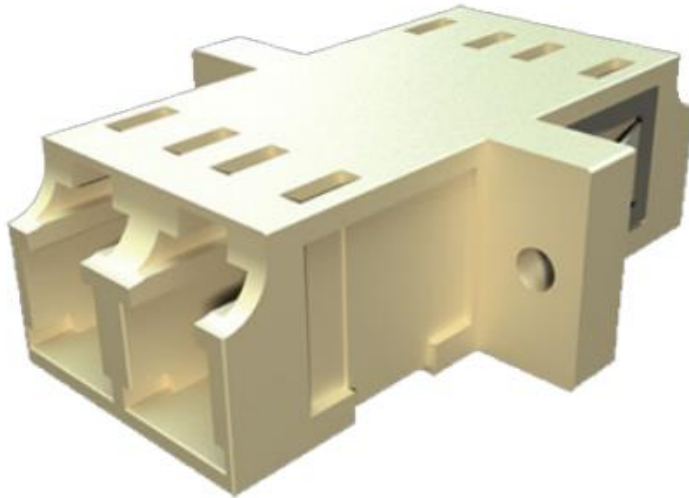


Professionally approved products.

Datasheet **LC Adaptors**

RS Stock number [536-7617](#)



Description:

This range of LC adaptors have high precision alignment sleeves for improved reliability and better reconnect ability. The LC adaptors come with ceramic sleeves for both singlemode and multimode. The housing is available in different colours with options for flange or flangeless body and metal or inbuilt clips.

Specification:

| | Ceramic | Conformance |
|-----------------------------|--------------------------|--------------------|
| Insertion loss (typ): | 0.1dB | IEC 61300-3-4 |
| Mating durability: | 500 | IEC 61300-2-2 |
| Receptacle retention force: | 12N –2.5N | IEC 61754-13 |
| Operating temperature: | -25 to +70, 12 cycles | IEC 61300-2-22 |

Professionally approved products. Datasheet

Features:

- Complies with IEC 61754-20
- High precision alignment sleeve
- Low insertion loss and high reconnect ability
- Reach SvHC compliant
- Materials compliant to RoHS2
- Available in simplex, duplex and quad adaptors

Applications:

- Telecommunications networks
- CATV, LAN, MAN and WAN application
- Data processing networks
- Cable television
- Fibre-To-The-Home
- Premises distribution