

**Professionally approved products.**

## Datasheet

# Stainless Steel Threaded Fitting Hose Nipple

RS Stock number [499-3760](#)



### Features:

Stainless Steel  
 150lbs fittings  
 Material: S/S 316  
 With BSP Screwed end  
 Investment casting  
 Barrel nipple is made from S/40 pipe

### Specifications:

Connection 1:  $\frac{3}{4}$  in R Male  
 Connection 2: 20 mm Barbed Male  
 Connection Gender 1: Male  
 Connection Gender 2: Male  
 Fitting Type: Hose Nipple  
 Thread Size 1:  $\frac{3}{4}$  in  
 Thread Standard 1: R

## Professionally approved products.

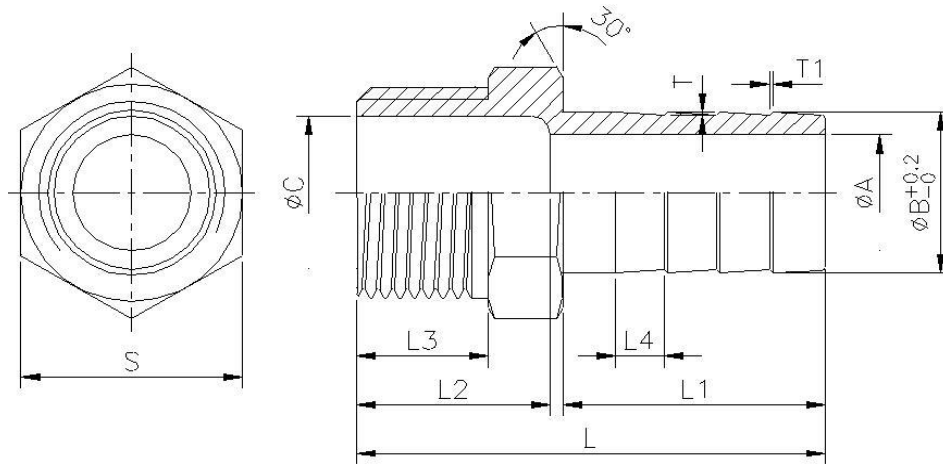


Figure 1

### Measurements:

A	B	C	L	L1	L2	L3	L4	S	T	T1	Weight (kg)
15	20	21	60	34	21.5	15.5	6.8	28	0.5	N/A	0.0854

All measurements given in the above table are given in mm unless otherwise stated. These measurements are for Figure 1 above.