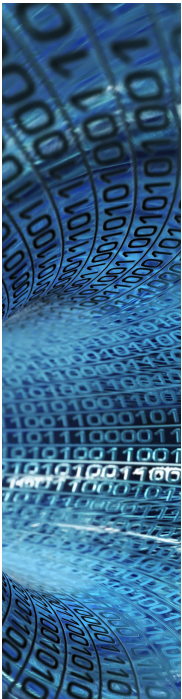


# QUARTZ HEATER



## Quartz heaters Heating Elements

### DESCRIPTION

Quartz heaters provide short to medium wavelength radiation and can be the most preferred source of heat when rapid heater response is needed. They are normally used for fast response applications, where the product can't be moved away from the heaters quickly or where long periods of off cycles provide cost saving advantages using quartz heaters capable of reaching operating temperatures in a matter of seconds.

The large variety of sizes, shapes and watt densities allows quartz emitters to

be highly useful in zoning. Arrangements such as plastic thermoforming sheet-fed applications have complex heating patterns and need high-speed roller processes. These machines requiring precise zone control and quartz heaters offer a quicker response over ceramic heaters. These emitters are approximately the same size as our ceramic infrared heaters.

### APPLICATIONS

- . Fast Response
- . Rapid heat-up
- . Rapid cool down

- . Ideal for fast cycling machines
- . Highly reflective stainless steel casing
- . High radiant efficiency
- . Low convection losses

### CONSTRUCTION

The heaters are comprised of a series of quartz tubes running parallel to each other within highly reflective stainless steel housing. Each tube contains a coiled resistance wire available in a variety of wattages and voltages. Watt densities up to 30 w/ sq. inch (4.65 w/ sq. cm) are available.

Length mm	Width mm	wattage	voltage	Part No.
248	62	250	230	UFQ250-3762515
248	62	300	230	UFQ300-3762521
248	62	400	230	UFQ400-7054736
248	62	500	230	UFQ500-7054745
248	62	750	230	UFQ750-7054748
248	62	1000	230	UFQ1000-7054742
125	62	200	230	UHQ200-3762587
125	62	250	230	UHQ250-3762593
125	62	325	230	UHQ325-3762600
125	62	500	230	UHQ500-3762638