

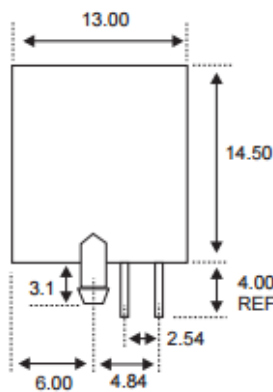
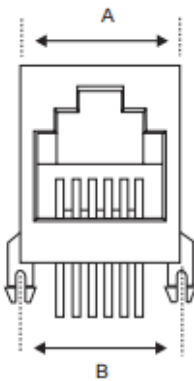
Professionally approved products.

Datasheet

Right Angle PCB Mount

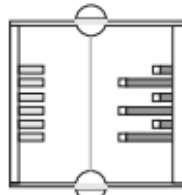
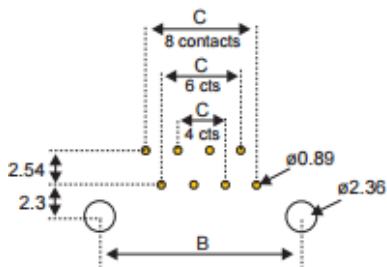
RS Stock number [331-6421](#)

Dimensions: (mm)



No of Positions	Dimensions		
	A	B	C
4	10.00	10.00	3.06
6	12.20	12.00	5.10
8	15.00	15.00	7.14

PCB Layout / top view



Specifications

Housing: Standard Material Glass Filled Polyester UL94V-0
Standard Colour Medium Gray

Contact: 0.46mm diameter Alloy C5210, Gold Plating over Nickel

Gold Plating: Selective Gold Plating