

Self Assembly Knob



Material

Acetal thermoplastic

Standard colour

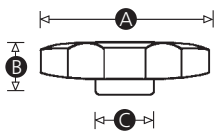
Red, grey or black.

Finish

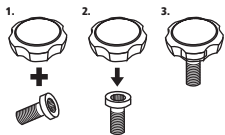
Textured matt finish

Thread

Simple push-fit assembly with a socket head cap screw.



SELF ASSEMBLY:



Part No.	A	B	C	To fit socket head cap screw (Metric)
771718	38	12	14	M6
771724	38	10	17	M8
771730	38	13	20	M10