



ENGLISH

Datasheet

RS Pro Uninsulated Tin Plated Crimp Ring Terminal

RS Stock No: 433-034



Specifications:

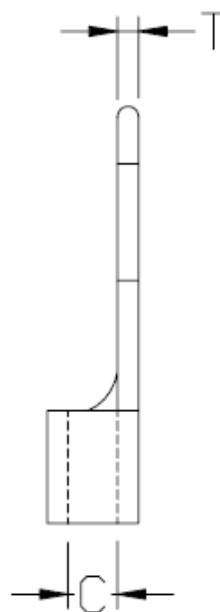
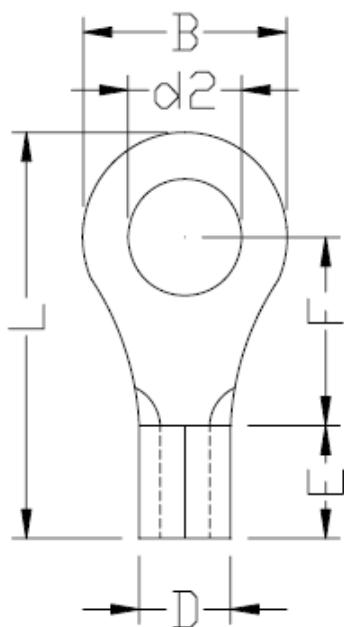
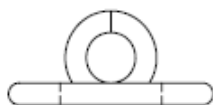
Material: Copper

Stud Size: #4

Wire Range: 22-16AWG

Voltage and Temp: 600V max., 400°C

Plating: Tin



Dimension B = 5.5mm +/- 0.3

Dimension C = 1.8mm +/- 0.3

Dimension D = 3.45mm +/- 0.3

Dimension d2 = 3.2mm +/- 0.15

Dimension E = 5.5mm +/- 0.3

Dimension F = 3.5mm +/- 0.3

Dimension L = 12.0mm +/- 1.0

Dimension T = 0.8mm +/- 0.03
