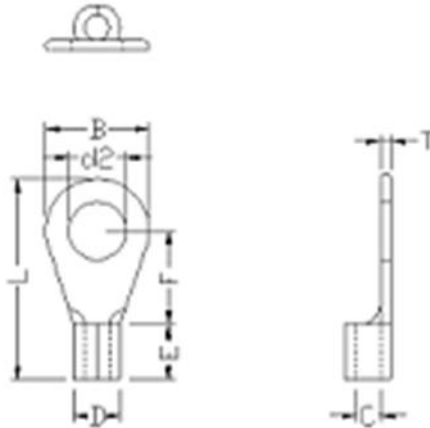


Professionally approved products.

Datasheet

Uninsulated Tin Plated Crimp Ring Terminal, M3.5 Stud Size, 22 → 16 AWG

RS Stock number [433-028](#)



Model No.	Insulation Colour	Wire Range Mm ² /Awg	Stud Size	d2	W	F	L	E	D	d1	T
377037	Red	0.5-1.5mm ² /22-16AWG	#6	3.7	6.6	6.3	19.6	10.0	4.0	1.7	0.8

Specifications:

1. Maximum Electric Current: (最大電流)

22-16AWG / 0.5-1.5mm²: 19A

16-14AWG / 1.5-2.5mm²: 27A

12-10AWG / 4-6mm²: 48A

2. Terminal Body: Copper (端子材質: 紅銅)

3. Insulation: (護套材質:)

4. Plating: Tin (表面處理: 鍍錫)

NBT—Non-Insulated butted seam

NB—Non-insulated brazed seam