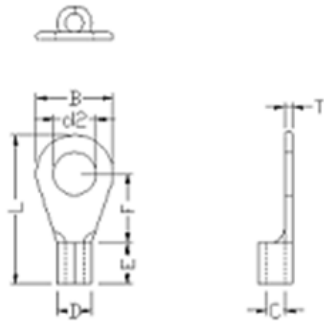


Professionally approved products.

Datasheet

Uninsulated Tin Plated Crimp Ring Terminal, M5 Stud Size, 22 → 16 AWG

RS Stock number [433-012](#)



Insulation Colour	Wire Range Mm ² /Awg	Stud Size	d2 (mm)	W (mm)	F (mm)	L (mm)	E (mm)	D (mm)	d1 (mm)	T (mm)
Red	0.5-1.5mm ² /22-16AWG	#10	5.3	10.0	11.0	26.7	10.0	4.0	1.7	0.8

Specifications:

1. Maximum Electric Current: (最大電流)

22-16AWG / 0.5-1.5mm²: 19A

16-14AWG / 1.5-2.5mm²: 27A

12-10AWG / 4-6mm²: 48A

2. Terminal Body: Copper (端子材質: 紅銅)

3. Insulation: (護套材質:)

4. Plating: Tin (表面處理: 鍍錫)

NBT--Non-Insulated butted seam

NB--Non-insulated brazed seam