

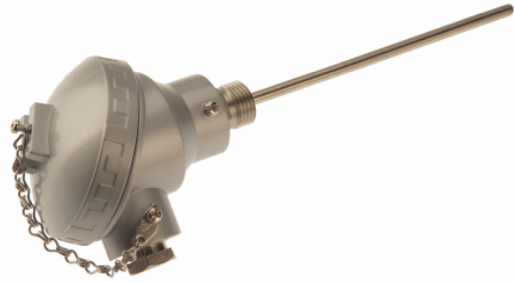
# Data sheet

## Pt100 Platinum Resistance Probe with Terminal Head

With or without 1/2"BSPP process connection, aluminium alloy head termination



(without process connection)



(with process connection – 1/2"BSPP parallel)

- Heavy duty Pt100 probe with terminal head
- Class B, 4 wire connection
- Available in probe lengths between 150mm & 600mm
- 6.0mm diameter in 316 stainless steel
- With or without 1/2"BSPP parallel process connection
- IP67 aluminium alloy weatherproof connection head
- Sensor temperature rating -100°C to +450°C
- Conforms to IEC 751
- See below for optional thermopockets & fittings from RS Components

### Specifications

Sensor type: Pt100 (100 Ohms @ 0°C) to IEC 751, Class B, 4 wire  
 Construction: 6.0mm diameter stem in 316 stainless steel  
 Termination: IP67 aluminium alloy weatherproof connection head with 4 wire connection block, M20 x 1.5mm cable entry (gland included)  
 Process connection: 1/2"BSPP parallel (where applicable)  
 Probe temperature range: -100°C to +450°C (connection head @ 170°C)

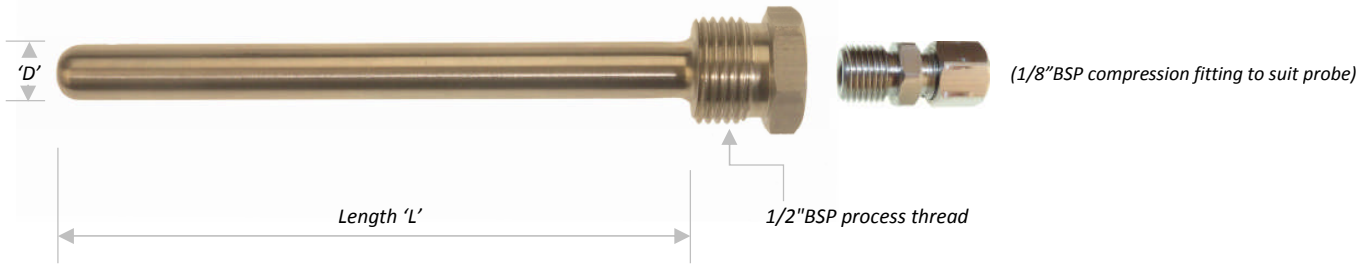
Probe DiaØ	Probe length	1/2"BSPP process connection	RS order code
6.0mm	200mm	No	285-633
6.0mm	400mm	No	285-649
6.0mm	600mm	No	285-655
6.0mm	150mm	Yes	455-4040
6.0mm	250mm	Yes	455-4056
6.0mm	500mm	Yes	455-4062

Continued:

RS117/0213

Optional stainless steel thermopockets for use with industrial style temperature probes to provide protection for the sheathing from corrosive media, and to facilitate probe replacement without disturbing the process

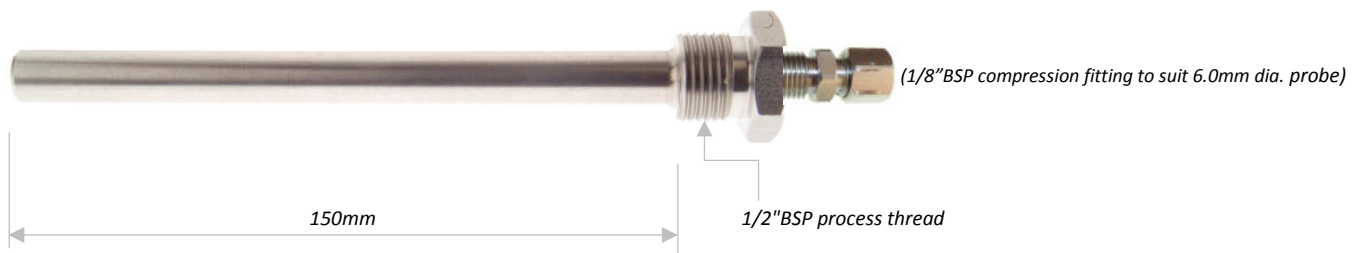
**Fabricated Thermopockets** *(316 stainless steel welded construction complete with compression fitting)*



Suits probe DiaØ	Process Thread	*Immersion Length 'L'	Pocket Dia 'D'	C/W fitting /to suit	RS order code
6.0mm	1/2" BSP parallel	100mm	11.1mm	Yes/6.0mm	363-3007
6.0mm	1/2" BSP parallel	150mm	11.1mm	Yes/6.0mm	286-923
6.0mm	1/2" BSP parallel	350mm	11.1mm	Yes/6.0mm	286-939
6.0mm	1/2" BSP parallel	550mm	11.1mm	Yes/6.0mm	286-945

*\*To allow full insertion of probe into pocket then length of probe to be used should be a minimum of 50mm longer than immersion length 'L' shown*

**Solid drilled Thermowell** *(standard parallel type – 303 stainless steel)*

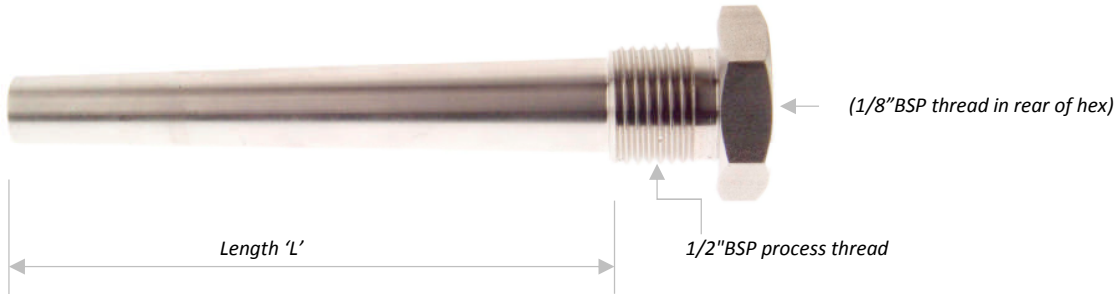


Suits probe DiaØ	Process Thread	*Immersion Length	Pocket Dia	C/W fitting /to suit	RS order code
6.0mm	1/2" BSP parallel	150mm	12mm	Yes/6.0mm	338-9508

*\*To allow full insertion of probe into pocket then length of probe to be used should be a minimum of 50mm longer than immersion length shown*

Continued:

**Solid drilled Thermowells – Tapered** *(high pressure tapered type – 316 stainless steel)*



Suits probe DiaØ	Process Thread	*Immersion Length 'L'	Pocket Dia	C/W fitting /to suit	RS order code
6.0mm	1/2" BSP parallel	100mm	16/12mm	Optional	436-0665
6.0mm	1/2" BSP parallel	150mm	16/12mm	Optional <i>(RS 381-7356)</i>	436-0671

*\*To allow full insertion of probe into pocket then length of probe to be used should be a minimum of 50mm longer than immersion length 'L' shown*

**Compression fittings** *(stainless steel in BSP parallel or BSPT tapered thread)*



*(BSP parallel)*



*(BSPT tapered)*

Male in-line stainless steel compression type with nut & olive  
1/8", 1/4" & 1/2" BSP parallel or BSPT tapered threads available

**BSP Parallel:**

Type	Thread Size/Type	Suits ProbeØ	RS order code
St/Steel	1/8" BSP parallel	6.0mm	381-7356
St/Steel	1/4" BSP parallel	6.0mm	381-7378
St/Steel	1/2" BSP parallel	6.0mm	381-7407

**BSPT Tapered:**

St/Steel	1/4" BSPT tapered	6.0mm	381-7390
St/Steel	1/2" BSPT tapered	6.0mm	286-793