

MECHANICAL

INSULATOR MATERIAL
PBT & Glass-fibre reinforced
UL 94V-0

CONTACT
Brass

SHELL
Steel

FINISH
Contact: Gold flash
Shell: Nickel or Tin

DURABILITY
100 cycles

ELECTRICAL

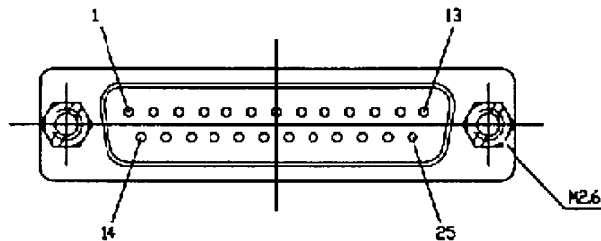
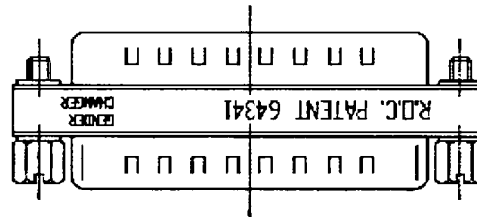
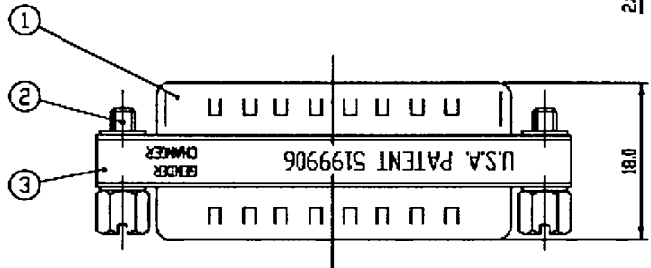
CURRENT RATING
5 Amp

DIELECTRIC WITHSTANDING VOLTAGE
AC 1000V Min. (for 1 minute)

INSULATION RESISTANCE
1000M Ω Min. (at 500V DC)

CONTACT RESISTANCE
20m Ω Max.

WORKING TEMPERATURE
-55°C to +105°C



UNLESS OTHERWISE SPECIFIED		TITLE	
TOLERANCE :		25Way Mini Gender Changer	
X ±0.2 ANGLES : ±2°			
X.X ±0.1			
X.XX ±0.05 DO NOT SCALE DRAWING			
DRAWN BY	<i>Arhug</i>	UNIT	MM
CHECKED BY	<i>[Signature]</i>	PART NO.	218-194
APPROVED BY	<i>[Signature]</i>	SCALE	1 : 1
ENG NO.	DEWX2001061901X0	THIRD ANGLE PROJECTION	
ITEM NO.	MGCD25M/D25M-01E	PAGE	1 OF 1
		DATE	06/19/2001

No.	DESCRIPTION
3	Label , Yellow Color
2	#4-40 Hex Screw
1	D-SUB 25 Male