

Radio interference suppression filter, single-phase HLE 110-230/12



Picture shows HLE 110-230/16

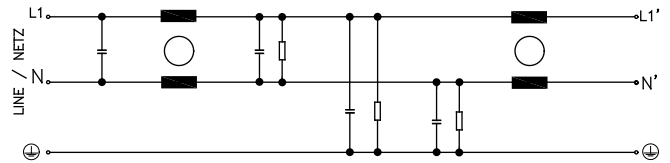
Advantages

- For enhanced requirements
- Single-stage filter concept
- Efficient filter effect against line-bound interference emissions
- Increase in the interference immunity of the connected consumer

Applications

Radio interference suppression filter for line-side interference suppression of single devices, frequency converters or as group interference suppression.

Sample application



Standards

Radio interference suppression filter to DIN EN 60939-2

Approvals



Radio interference suppression filter, single-phase **HLE 110-230/12**

| Type | | HLE 110-230/12 |
|--------------------------|--|-------------------|
| Electrical data | Operating data | |
| | Rated voltage | 250 Vac |
| | Voltage range | 0 - 250 Vac |
| | Rated current | 12 A |
| | Leakage current (50 Hz)* | 8.50 mA |
| | Rated frequency | 50 - 60 Hz |
| | Overrating Capacity | 150 %, short-time |
| | Standards | |
| | Classification | EMI filter |
| | Environment | |
| Ambient temperature max. | 50 °C | |
| Climatic category | 25/085/21 [in accordance with EN 60068-1] | |
| Safety and protection | | |
| Protection index | IP 20 | |
| Type | Metal enclosure | |
| Safety class (prepared) | I | |
| Test voltage | 1700 Vdc Phase/Phase, 2700 Vdc Phase/PE | |
| Notes | | |
| * | Leakage current measured against the maximum permissible input voltage fluctuation in accordance with IEC 38 ±10 % | |
| Order numbers | | |
| Order Number | HLE 110-230/12 | |

| Type | | HLE 110-230/12 |
|-----------------|-----------------------|--------------------------------|
| Mechanical data | Terminal and mounting | |
| | Connections phase | Screw clamp, 4 mm ² |
| | Connections PE | Bolt, M5 |
| | Fixing method | Mounting lugs |
| | Fixing screws | M5 |
| | Measures and weights | |
| | Weight | 0.78 kg |

