

Autotransformer AT3 2-44/46-4



Picture shows AT3 2-20/21-4

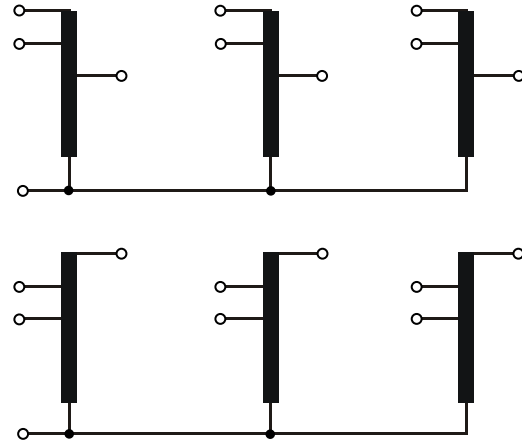
Advantages

Low weight and small size (compared to isolating transformers)
Very high efficiency
Inverse operation possible
Patented assembly technology to lower heat losses
Very good corrosion protection and low noise thanks to BLOCKIMPEX vacuum impregnation
Fixed, contact protected screw connection terminals complying with UVV BGV A3
Multifunctional fixing rails with 12 oval slots
Enlarged fixing rail for easy installation from above
Integrated crane eyes

Applications

Autotransformer for adjustment of the voltage on the input and output sides with no requirement for electrical isolation.

Sample application



Standards

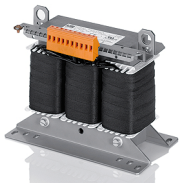


Autotransformer
to: VDE 0570 Teil 2-13, DIN EN 61558-2-13, EN 61558-2-13,
IEC 61558-2-13, UL 5085-1/-2, CSA 22.2 No.66

Approvals



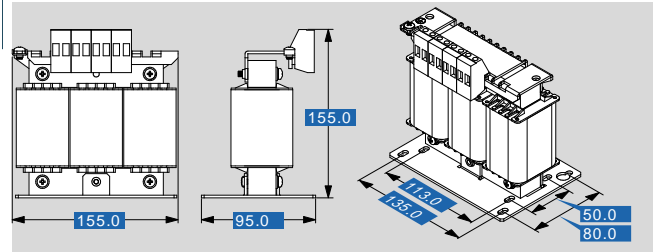
UL 5085-1/-2, CSA 22.2 No.66



Autotransformer AT3 2-44/46-4

Type		AT3 2-44/46-4
Electrical data	Input	
	Rated input voltage	3 x 440/460 Vac
	Rated frequency	50 - 60 Hz
	Output	
	Rated output voltage	3 x 400 Vac
	Rated Power	2000 VA
	Vector group	YNΔ0
	Efficiency	87 %
	Approvals	
	Approvals	cURus
Environment		
Ambient temperature max.	40 °C	
Safety and protection		
Type	open type	
Class of Insulation System	F	
Protection index	IP 00	
Safety class (prepared)	I	
Short circuit strength	non-short-circuit proof	
Test voltage	4000 Vac, 50 Hz	
Order numbers		
Order Number	AT3 2-44/46-4	

Type		AT3 2-44/46-4
Mechanical data	Terminal and mounting	
	Fixing method	Fixing rail
	Fixing screws	M5
	Terminals	Screw-type terminals
	Measures and weights	
	Weight	4.10 kg
	Core type	3 UI 75/26,5



Subjects to change.