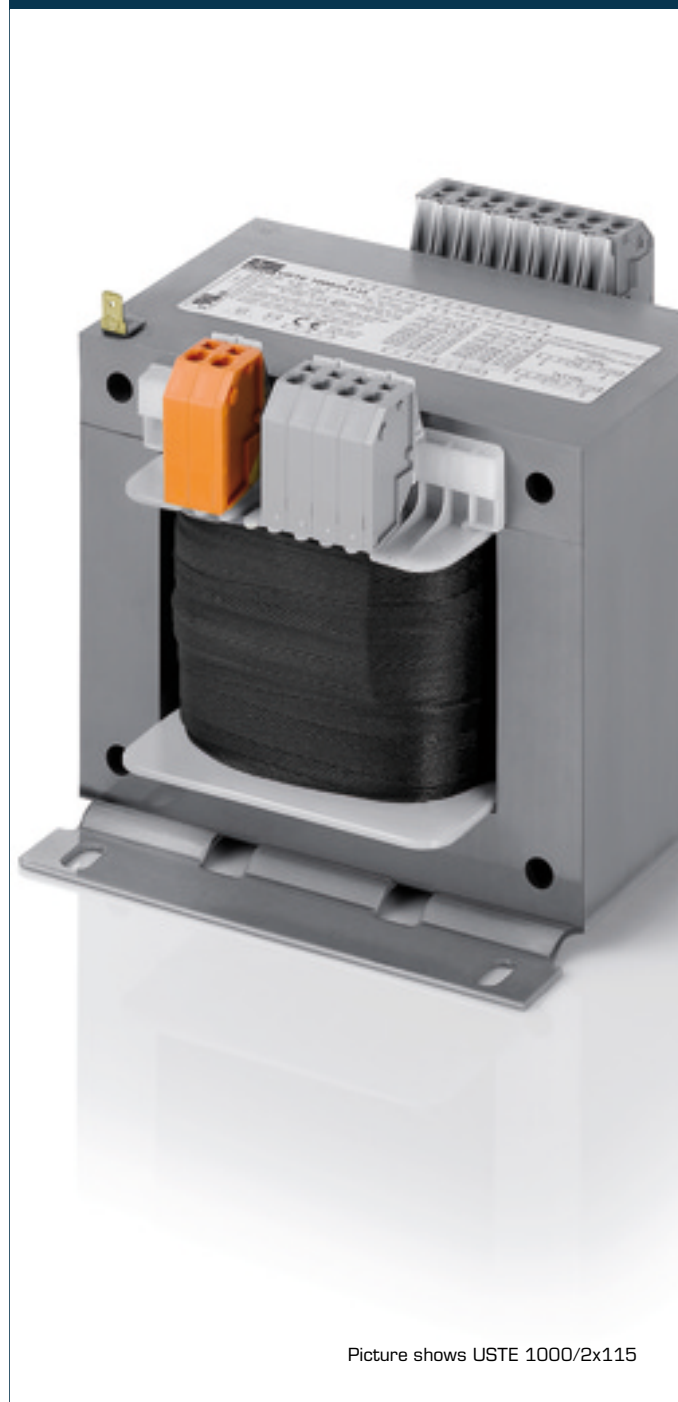


Universal control- and safety isolating- resp. isolating transformer **USTE 800/2x115**



Picture shows USTE 1000/2x115

Advantages

Universal input voltages 208 to 600 Vac
Very good switch-on behaviour thanks to reduced starting currents
High performance for the volume thanks to compact design
Very good corrosion protection and low noise thanks to BLOCKIMPEX vacuum impregnation
Quick to cable up thanks to the use of spring-loaded terminals
Contact protected screw connection terminals complying with UVV BGV A3
Simple mounting thanks to robust metal footplate with oval slots
Up to 250 VA with combination footplate for bolted and rail mounting

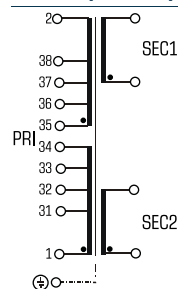
Applications

As a control transformer for the electrical isolation of the input and output sides. The construction of the transformer to supply control systems according to VDE 0113 is designed.

As an isolating transformer for the safe electrical isolation of the input and output sides. The transformer may be used to set up protective separation as a protective measure in accordance with VDE 0100.

As a safety isolating transformer for the safe electrical isolation of the input and output sides. The transformer is suitable for creating SELV and PELV circuits because of the limit on the output voltage.

Sample application



Standards



Control transformer
to: VDE 0570 Teil 2-2, DIN EN 61558-2-2, EN 61558-2-2, IEC 61558-2-2,
UL 5085-1/-2, CSA 22.2 No.66
Isolating transformer
to: VDE 0570 Part 2-4, DIN EN 61558-2-4, EN 61558-2-4, IEC 61558-2-4,
UL 5085-1/-2, CSA 22.2 No.66

Approvals



UL 5085-1/-2, CSA 22.2 No.66



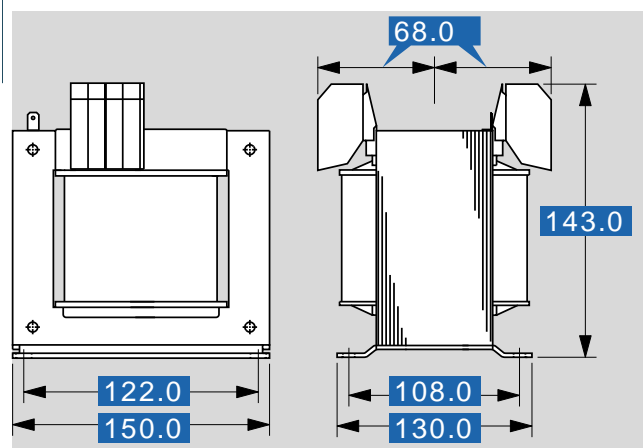
Universal control- and safety isolating- resp. isolating transformer USTE 800/2x115

Electrical data

Type	USTE 800/2x115
Input	
Rated input voltage	208 Vac/230 Vac/380 Vac 400 Vac/415 Vac/440 Vac 460 Vac/480 Vac/500 Vac 525 Vac/550 Vac/575 Vac 600 Vac
Rated frequency	50 - 60 Hz
Output	
Rated output voltage	2 x 115 Vac
Rated power VDE (DB cos phi=1)	800 VA
Rated power VDE (KB cos phi=0.5)	3400 VA
No-load voltage (app. x factor)	1.03
Efficiency	93 %
Standards	
Classification	Control- and isolating transformer
Approvals	
Approvals	cURus
Environment	
Ambient temperature max.	40 °C
Cooling method	self-cooling
Safety and protection	
Type	open type
Class of Insulation System	VDE=B, UL=class 130
Protection index	IP 00
Safety class (prepared)	I
Short circuit strength	non-short-circuit proof
PRI Fusing recommendation by circuit breaker with tripping characteristic type 20 x I rated related to set)	
Setting range 208 - 230 Vac	2.50 - 4.00 A
Setting value 208 - 230 Vac	3.90 A
Setting range 380 - 415 Vac	1.60 - 2.50 A
Setting value 380 - 415 Vac	2.20 A
Setting range 440 +20 Vac	1.60 - 2.50 A
Setting value 440 +20 Vac	1.90 A
Setting range 500 -20/+25 Vac	1.60 - 2.50 A
Setting value 500 -20/+25 Vac	1.70 A
Setting range 575 ±25 Vac	1.00 - 1.60 A
Setting value 575 ±25 Vac	1.50 A
Order numbers	
Order Number	USTE 800/2x115

Mechanical data

Type	USTE 800/2x115
Terminal and mounting	
Fixing method	Base plate
Fixing screws	M6
Terminals	Spring terminals, PE 6.3 x 0.8
Measures and weights	
Weight	10.90 kg



Subjects to change.