

Device connector, front mounting - SH-8EPC58AAD00S - 1621565

Please be informed that the data shown in this PDF Document is generated from our Online Catalog. Please find the complete data in the user's documentation. Our General Terms of Use for Downloads are valid (<http://phoenixcontact.com/download>)



Device connector for front wall, angled rotatable, shielded: Yes, Screw locking, M23, Number of positions: 4+4+4+PE, Type of contact: Male connector, Crimp connection, Axial O-ring, 4x Ø3.2, Flange dimensions: 26 mm x 26 mm



Key Commercial Data

Packing unit	1 pc
GTIN	 4 046356 937139
Weight per Piece (excluding packing)	111.11 g
Custom tariff number	85366990
Country of origin	Germany
Note	Made to Order (non-returnable)

Technical data

Temperature range

Ambient temperature (operation)	-40 °C ... 130 °C
---------------------------------	-------------------

Data of the insulating body

Note	Order information Crimp contacts, 4x Ø 0.8 mm, 4x Ø 1 mm, 5x Ø 2 mm, order separately
Insulator material	Polyamide (PA 6.6)
Direction of rotation of contact chamber numbering	Standard
Coding	N
Contact connection method	Crimp connection
Type of contacts	Male connector
Number of positions	13
Contact diameter of power contacts	2 mm
Litz wire cross section of power contacts min.	0.25 mm ²
Litz wire cross section of power contacts max.	4 mm ²
Nominal current per power contact at 25°C	30 A
Nominal voltage, power contact	630 V AC

Device connector, front mounting - SH-8EPC58AAD00S - 1621565

Technical data

Data of the insulating body

Contact diameter of signal contacts	1 mm
Litz wire cross section of signal contacts min.	0.06 mm ²
Litz wire cross section of signal contacts max.	1 mm ²
Nominal current per signal contact at 25°C	8 A
Nominal voltage, signal contact	50 V
Contact diameter, data contacts	0.8 mm
Litz wire cross section, data contacts, min.	0.08 mm ²
Litz wire cross section, data contacts, max.	0.5 mm ²
Nominal current per data contact at 25°C	3.6 A
Nominal voltage of data contact	50 V
Overvoltage category	III
Pollution degree	3

Housing data

Housing material	Turned parts: copper zinc alloy (CuZn), die-cast parts: zinc (GD-Zn)
Flange dimensions	26 mm x 26 mm
Type of locking	Screw locking
Degree of protection (when plugged in)	IP67
	IP68
Thread type	M23

Classifications

eCl@ss

eCl@ss 4.0	272607xx
eCl@ss 4.1	27260701
eCl@ss 5.0	27143424
eCl@ss 5.1	27143424
eCl@ss 6.0	27143424
eCl@ss 7.0	27440209
eCl@ss 8.0	27440102

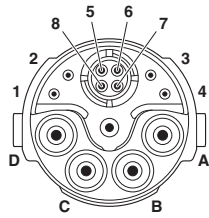
ETIM

ETIM 4.0	EC002635
ETIM 5.0	EC002635

Drawings

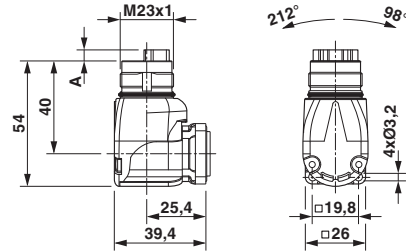
Device connector, front mounting - SH-8EPC58AAD00S - 1621565

Schematic diagram



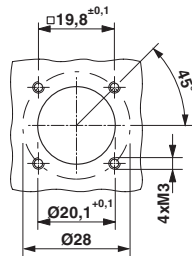
Pin assignment of pin, CAT5

Dimensional drawing



Pin version: dimension A = 4.7 mm, socket version: dimension A = 0 mm

Dimensional drawing



Installation dimensions