

ROUND BACKING PLATE, FOR EM. STOP MUSH. PUSHBUTTON, YELLOW, SELF-ADHESIVE, EXTERNAL DIAMETER 75MM, INTERNAL DIAMETER 23MM, WITH INSCRIPTION: EMERGENCY STOP, 4 LANGUAGES: DE,EN,IT,SP



Figure similar

product brand name	SIRIUS ACT
Product designation	Commanding and signaling devices
Design of the product	EMERGENCY STOP name plate

General technical data:

<b>Shock resistance</b>	
<ul style="list-style-type: none"> <li>for railway applications acc. to DIN EN 61373</li> </ul>	Category 1, Class B
<b>Vibration resistance</b>	
<ul style="list-style-type: none"> <li>for railway applications acc. to DIN EN 61373</li> </ul>	Category 1, Class B

Accessories:

Material of accessory	Plastic
Mounting type of label	stick
Marking of backing plate	NOT-HALT, EMERGENCY STOP, EMERGENZA, EMERGENCIA (de, en, it, sp)
Shape of backing plate	Round
Color of backing plate	yellow/black (plate/text)
Product function Illuminated backing plate	No

Certificates/ approvals:

For use in hazardous locations	Declaration of Conformity	other
--------------------------------	---------------------------	-------

[Herstellereklärung](#)

[Bestätigungen](#)



EG-Konf.

### Further information

**Information- and Downloadcenter (Catalogs, Brochures,...)**

<http://www.siemens.com/industrial-controls/catalogs>

**Industry Mall (Online ordering system)**

<http://www.siemens.com/industrymall>

**Cax online generator**

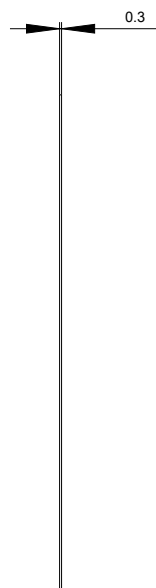
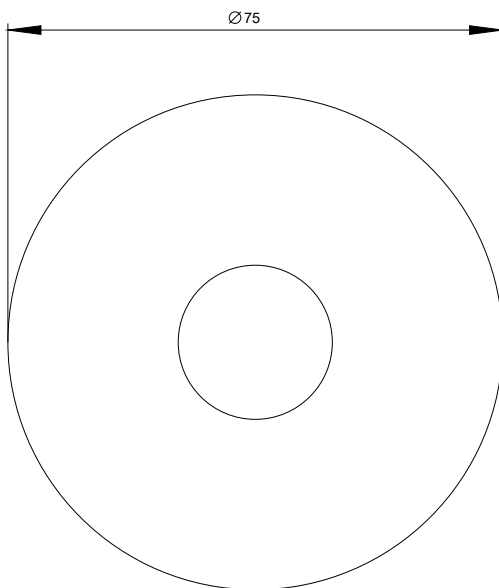
<http://support.automation.siemens.com/WW/CAXorder/default.aspx?lang=en&mlfb=3SU19000BC310NB0>

**Service&Support (Manuals, Certificates, Characteristics, FAQs,...)**

<https://support.industry.siemens.com/cs/ww/en/ps/3SU19000BC310NB0>

**Image database (product images, 2D dimension drawings, 3D models, device circuit diagrams, EPLAN macros, ...)**

[http://www.automation.siemens.com/bilddb/cax\\_de.aspx?mlfb=3SU19000BC310NB0&lang=en](http://www.automation.siemens.com/bilddb/cax_de.aspx?mlfb=3SU19000BC310NB0&lang=en)



last modified:

14.08.2015