

ENCLOSURE FOR COMMAND DEVICES, 22MM, ROUND,
ENCLOSURE MATERIAL METAL, ENCLOSURE TOP PART
YELLOW, 1 METAL COMMAND POINT, RECESS FOR LABELS,
UNEQUIPPED



Figure similar

product brand name	SIRIUS ACT
Product designation	Commanding and signaling devices
Design of the product	Surface-mounted housing

Enclosure:	
Design of the housing	with recess for label
Shape of the enclosure front	Square
Material of the enclosure	metal
Number of command points	1
Product component	
• protective collar	No
Color	
• of top part of the enclosure	yellow
Mounting type of the enclosure	Vertical / horizontal

General technical data:	
Protection class IP	IP66, IP67, IP69(IP69K)
Shock resistance	
• for railway applications acc. to DIN EN 61373	Category 1, Class B
Vibration resistance	

• for railway applications acc. to DIN EN 61373

Category 1, Class B

Installation/ mounting/ dimensions:

Height	89.4 mm
Width	85 mm
Depth	64 mm
Mounting diameter	22 mm

Certificates/ approvals:

For use in hazardous locations	Declaration of Conformity	other
--------------------------------	---------------------------	-------

[Herstellereklärung](#)

[Bestätigungen](#)



EG-Konf.

Further information

Information- and Downloadcenter (Catalogs, Brochures,...)

<http://www.siemens.com/industrial-controls/catalogs>

Industry Mall (Online ordering system)

<http://www.siemens.com/industrymall>

Cax online generator

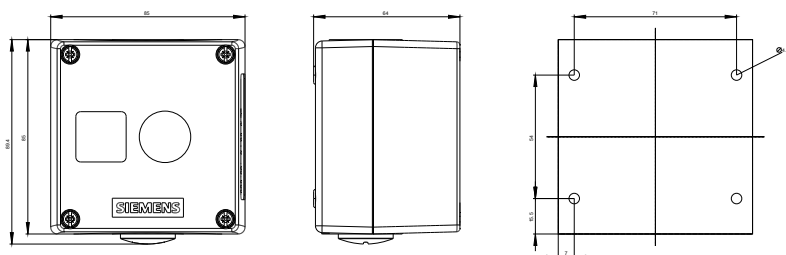
<http://support.automation.siemens.com/WW/CAXorder/default.aspx?lang=en&mlfb=3SU18510AA000AB2>

Service&Support (Manuals, Certificates, Characteristics, FAQs,...)

<https://support.industry.siemens.com/cs/ww/en/ps/3SU18510AA000AB2>

Image database (product images, 2D dimension drawings, 3D models, device circuit diagrams, EPLAN macros, ...)

http://www.automation.siemens.com/bilddb/cax_de.aspx?mlfb=3SU18510AA000AB2&lang=en



last modified:

25.08.2015