

FLIR T620 & T640

High performance thermal imaging with on-board 5MP visual camera, interchangeable lens options with autofocus, and large 4.3" touchscreen LCD

These thermal cameras combine excellent ergonomics with superior image quality, providing the ultimate image clarity and accuracy plus extensive communication possibilities:

Highest IR Resolution in Its Class – Crisp thermal images with 307,200 pixels (640 x 480) for the best detection, pictures, and temperature measurements from long range

New! MSX™ Enhancement – Multi-Spectral Dynamic Imaging adds visible spectrum definition to IR images in real time for excellent thermal detail that instantly highlights problem locations (T640 only)

New! Field of View (FOV) Match – Option to match the visible camera field of view to the IR FOV for better documentation

New! GPS – Automatically adds location data to images for including in reports (live link in FLIR Tools Reports to Google Maps)

Programmable Button – Provides easy access to favorite functions

Wi-Fi Connectivity – Send images and data to smartphones and tablets and share critical information quickly with the FLIR Tools Mobile for Apple® and Android™, featuring live video streaming and remote control via the mobile device

Accuracy – Calibrated within +/- 2°C or +/- 2% of reading

High Temperature Range – measures to 3632°F (2000°C) targeting electrical/industrial applications (T620 to 1202°F/650°C)

Scalable P-i-P and Thermal Fusion – Blend thermal with visible light images on-screen; includes picture-in-picture window sizing

Multiple Measurements – Report all the details with 10 measurement spots, 5 box areas, Delta T temperature differential, isotherm, and auto hot/cold markers

METERLiNK® – Wirelessly transmit vital diagnostic data from clamp and moisture meters directly to the camera for annotating thermal images to further support findings and decisions

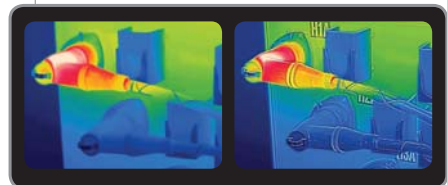
Annotation – Add voice comments via Bluetooth headset and text notes from the touchscreen keypad. New! T640 has image sketch feature to draw circles and pointers on IR/Visual stored images

InstantReport – Create PDF document directly from the camera

Includes – (see back specification chart for included accessories)



Wi-Fi Connectivity



Original IR Image on the Left and with MSX™ Enhancement on the Right image (available on T640 model)



Built-in 5MP Digital Camera, LED Lamps, Laser Pointer, Diopter, Image Capture Button and Auto/Manual focus capability, 120° Rotating Lens & digital Zoom

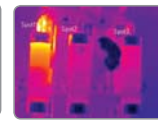
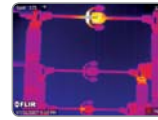
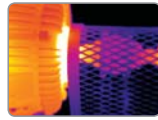
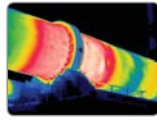


Thermal Fusion is an IR image shown above, below or within temperature interval blended onto a digital image



Sketch on IR — allows you to draw circles and pointers on IR/Visual stored images (T640 only)

Applications



Utility Market — Use infrared cameras to locate problems, detect hot spots and other problems before they turn into costly failures & production downtime or electrical fires.

Electrical Inspections — With FLIR thermal imaging cameras electrical contractors can scan electrical cabinets/panels and components for a non-contact view of conditions.

Imaging Specifications

FEATURES	FLIR T620	FLIR T640
Temperature range	-40°F to 1202°F (-40°C to 650°C)	-40°F to 3632°F (-40°C to 2000°C)
Thermal sensitivity (N.E.T.D)	<0.04°C at 30°C	<0.035°C at 30°C
Zoom	4X Continuous	8X Continuous
Focus	Manual or Automatic (one shot)	Continuous, Manual or Automatic (one shot)
LCD Image Sketch	—	Draw on stored images right on touchscreen
Multi-Spectral Dynamic Imaging (MSX)	—	IR image with enhanced detail presentation
Viewfinder	—	Color Viewfinder for viewing images in bright or sunny conditions
Measurement Presets	—	Presets for standard measurements
Profile Measurement Analysis	—	Shows a live graph of temperatures across a line on the image
COMMON FEATURES		
Frame Rate	30Hz	
Field of view/Minimum focus distance/FOV Match	25° x 19° / 0.82ft (0.25m) / Field of View Match where Digital Image FOV adapts to the IR lens	
Detector Type - Focal plane array (FPA) uncooled microbolometer	640 x 480 pixels	
Spectral range	7.5 to 14µm	
Lens	25° or 45° models (optional 7°, 15°, 25°, 45°, 80°, Close up 100, 50µm lenses available)	
Display	Built-in touch-screen 4.3" color LCD (800 x 480 pixels)	
Image modes	Thermal/Visual/Fusion/P+i-P (Resizable and movable) and Thumbnail Gallery	
Automatic image adjustment	Continuous/manual; linear or histogram based; possible to lock max, min or span temperature	
Manual image adjustment	Level/span/max/min	
Image Storage	1000 radiometric JPEG images (SD card memory)	
Image annotation	Voice (60 sec); text comments, Sketch	
Periodic image storage	7 seconds to 24 hours (IR) and 14 seconds to 24 hours (IR and visual)	
Video Lamp	Bright LED lamp	
Laser Classification/Type	Class 2/Semiconductor AlGaInP Diode Laser: 1mW/635nm (red)	
Set-up controls	Mode selector, color palettes, configure info to be shown in image, local adaptation of units, language, date and time formats, and image gallery	
Measurement modes	10 Spotmeters, 5 Box areas, Isotherm, Auto hot/cold spot, Delta T	
Measurement correction	Reflected ambient temperature & emissivity correction	
GPS	Location data automatically added to every image from built-in GPS	
Video Recording in Camera and Video Streaming	Non-radiometric IR-video recording (MPEG-4 to memory card), Visual and Radiometric IR-video streaming (Full dynamic to PC using USB or Wi-Fi), and Non-radiometric IR-video streaming (MPEG-4 using Wi-Fi and uncompressed colorized video using USB)	
Battery Type/operating time	Li-Ion/ 2.5 hours, Display shows battery status	
Charging system	In camera AC adaptor/2 bay charging system	
Shock / Vibration / Encapsulation; Safety	25G, IEC 60068-2-29 / 2G, IEC 60068-2-6 / IP54; EN/UL/CSA/PSE 60950-1	
Dimensions/Weight	5.6 x 7.7 x 3.7" (143x196x94mm)/2.87lbs (1.3kg), including battery	
Accessories included	SD Memory Card, 100-260V AC adaptor/charger, two Li-Ion rechargeable batteries, 2-bay battery charger, power supply (with multi-plugs), FLIR Tools™ software, USB cable, video cable, Bluetooth® headset, lens cap, neckstrap, and hard case	

Ordering Information

55901-2302 FLIR T620 Thermal Imaging IR Camera (640x480) with Wi-Fi and standard 25° Lens
 55901-2303 FLIR T620 Thermal Imaging IR Camera (640x480) with Wi-Fi plus 45° Lens
 55902-2502 FLIR T640 Thermal Imaging IR Camera (640x480) with Wi-Fi and standard 25° Lens
 55902-2503 FLIR T640 Thermal Imaging IR Camera (640x480) with Wi-Fi plus 45° Lens

ACCESSORIES

T198055 Li-Ion Rechargeable Battery
 1910490 Cigarette Lighter Adapter Kit, 12VDC (1.2m cable)
 T198126 2-Bay Battery Charger including Power Supply (multi plugs)
 T911048 Camera Pouch Case



Warranty: 10-Year
 Detector Protection
 5-Year Battery
 2-Year Parts & Labor
 (when camera is registered
 within 60 Days)



BOSTON

FLIR Systems, Inc.
 PH: +1 866.477.3687

PORTLAND

Corporate Headquarters
 FLIR Systems, Inc.
 PH: +1 866.477.3687

CANADA

FLIR Systems, Ltd.
 PH: +1 800.613.0507

MEXICO/LATIN AMERICA

FLIR Systems Brasil
 Av. Antonio Bardella
 PH: +55 15 3238 8070