

STRAIGHT FEMALE PANEL RECEPTACLES (captive center contact)

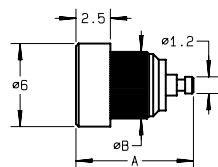


Fig. 1

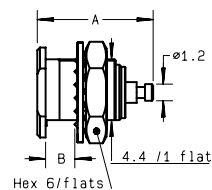


Fig. 2

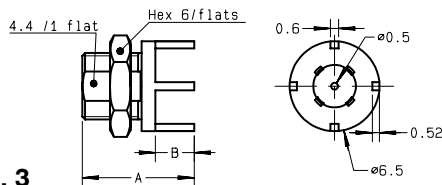


Fig. 3

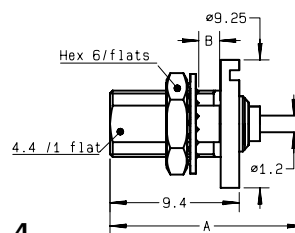
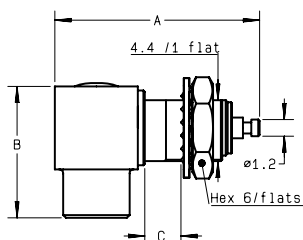
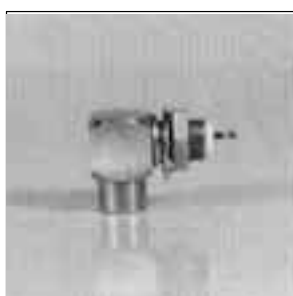


Fig. 4

part number	fig.	imp. (Ω)	dimensions (mm)		panel	finish	note
			A	B			
R113 402 220●	1	50	8.7	4.8	P 03	Nickel	Press-in mount
R113 553 000*	2	50	8.65	2.5	P 02	Gold	Recessed front mount
R113 553 020	2	50	8.65	2.5	P 02	Nickel	Recessed front mount
R113 554 020●	3	50	8.1	2.8	P 04	Nickel	Panel mount + PCB
R113 556 500●	4	50	14	5	P 02	Gold	Rear mount

RIGHT ANGLE FEMALE PANEL RECEPTACLES (captive center contact)



part number	imp. (Ω)	dimensions (mm)			panel	finish
		A	B	C		
R113 670 000●	50	14.1	9.4	2.5	P 02	Gold
R113 670 020●	50	14.1	9.4	2.5	P 02	Nickel

● Upon request.

* Packaging : 100 pieces. For unit packaging, please add W after the P/N