

## RIGHT ANGLE PLUGS CLAMP TYPE FOR FLEXIBLE CABLES

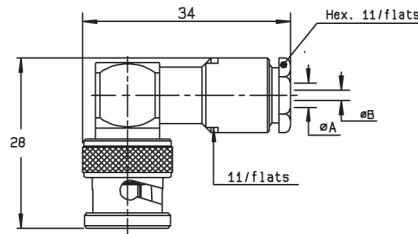


Fig. 1

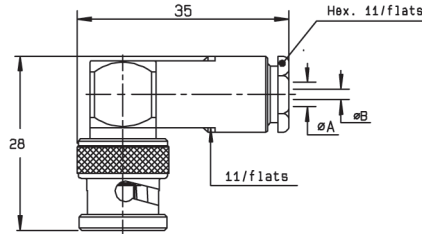


Fig. 2

Cable group	Cable group dia.	Part number	Fig.	Dimensions (mm)		Captive center contact	Note
				A	B		
RG174/RG316/RD316	2.6/50/S + D	<b>R141 154 000</b>	1	3.1	0.6	yes	100 pieces
RG58/RG141/RG142/RG223/RG400	5/50/S + D	<b>R141 156 000</b>	2	5.6	1.05		Unit packaging

## RIGHT ANGLE PLUGS FULL CRIMP TYPE FOR FLEXIBLE CABLES

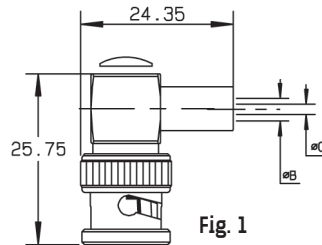
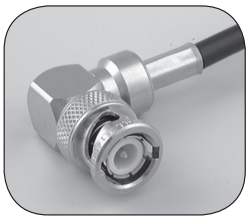


Fig. 1

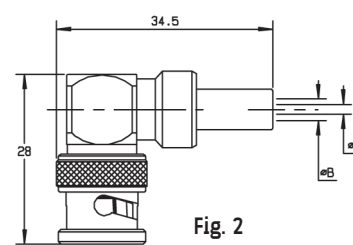


Fig. 2

Cable group	Cable group dia.	Part number	Fig.	Dimensions (mm)		Captive center contact	Note
				B	C		
RG174/RG316	2.6/50/S	<b>R141 181 161</b>	1	3.25	1.7	yes	Commercial version
RG58/RG141	5/50/S	<b>R141 182 000</b>	2	5.5	1.05		Single piece body
		<b>R141 182 161</b>	1	5.5	3.15		Commercial version
		<b>R141 182 177</b>	2	5.55	3.2		Non magnetic
RG142/RG223/RG400	5/50/D	<b>R141 183 000</b>	2	5.8	1.05		Single piece body

## STRAIGHT JACKS FOR FLEXIBLE CABLES

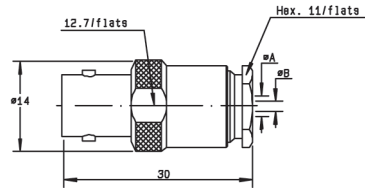


Fig. 1

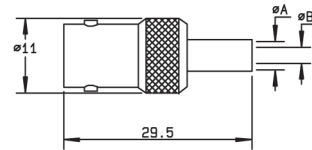


Fig. 2

Cable group	Cable group dia.	Part number	Fig.	Dimensions (mm)		Captive center contact	Note
				A	B		
RG58/RG141/RG142/RG223/RG400	5/50/S + D	<b>R141 207 000</b>	1	5.6	1.05	no	Clamp type
RG174/RG316	2.6/50/S	<b>R141 217 000</b>	2		0.57	yes	Full crimp type
RG58/RG141	5/50/S	<b>R141 237 000</b>	2	5.5	1.05	yes	Single piece body, full crimp type
		<b>R141 237 161</b>	2				Commercial version, full crimp type
RG142/RG223/RG400	5/50/D	<b>R141 220 000</b>	2				

For other types of cables (75Ω, 93Ω or BT cables), please see "additional connectors" on page 10-32.  
 To download data sheets and assembly instructions, visit [www.radiall.com](http://www.radiall.com) & enter the part number in the Search box.  
**Bold** part numbers represent products typically in stock & available for immediate shipment.  
 See page 8 and 9 for packaging information.