

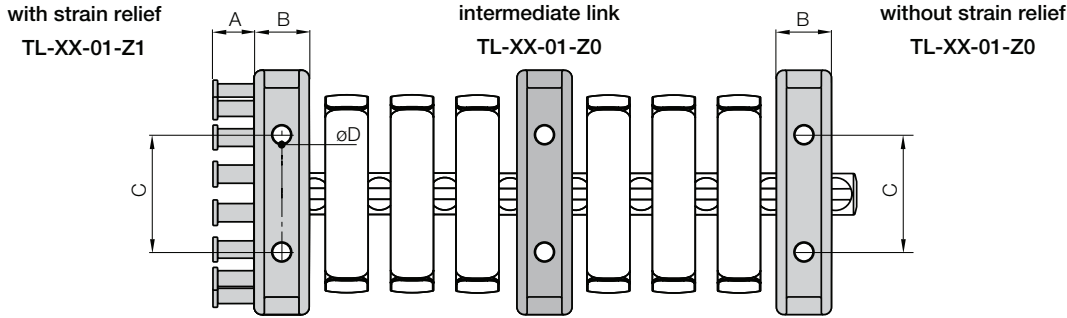
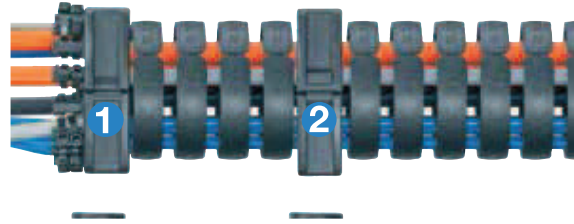
# E-Chain System® - Series Triflex® R Light Duty Mounting Brackets



Triflex®  
R

## Light mounting brackets

- Standard for TRL version, also compatible with all Triflex® R versions (TRC/TRE)
- Mounting bracket 1 with strain relief available
- Mounting bracket also as 2 intermediate link available
- Economical and light
- For simple 3D-movements and loads
- Consists of two halves - easy to assemble



### Mounting bracket with short or long strain relief

Ø Index	With short strain relief	With long strain relief	A in. (mm)	B in. (mm)	C in. (mm)	D in. (mm)	E in. (mm)
-30-	▶ TL-30-01-Z1	—	.51 (13)	.49 (12.5)	—	.94 (24)	.18 (4.5)
-40-	▶ TL-40-01-Z1*	TL-40-01-Z2	.55 (14)	.49 (12.5)	.79 (20)	1.42 (36)	.23 (5.8)
-60-	▶ TL-60-01-Z1*	TL-60-01-Z2	.79 (20)			1.89 (48)	.23 (5.8)
-65-	▶ TL-65-01-Z1*	—	.67 (17)	.79 (20)	1.89 (48)	.23 (5.8)	
-70-	▶ TL-70-01-Z1*	TL-70-01-Z2	1.06 (27)	2.52 (64)	.26 (6.5)		
-85-	▶ TL-85-01-Z1*	TL-85-01-Z1	.69 (17.5)	1.06 (27)	2.52 (64)	.26 (6.5)	
-100-	▶ TL-100-01-Z1*	TL-100-01-Z2	1.18 (30)	2.52 (64)	.26 (6.5)		



### Mounting bracket without strain relief

Ø Index	Without strain relief	A in. (mm)	B in. (mm)	C in. (mm)	D in. (mm)	E in. (mm)
-30-	▶ TL-30-01-Z0	.51 (13)	.49 (12.5)	—	.94 (24)	.18 (4.5)
-40-	▶ TL-40-01-Z0	.55 (14)	.49 (12.5)	.79 (20)	1.42 (36)	.23 (5.8)
-60-	▶ TL-60-01-Z0	.79 (20)			1.89 (48)	.23 (5.8)
-65-	▶ TL-65-01-Z0	.67 (17)	.79 (20)	1.89 (48)	.23 (5.8)	
-70-	▶ TL-70-01-Z0	1.06 (27)	2.52 (64)	.26 (6.5)		
-85-	▶ —	.69 (17.5)	1.06 (27)	2.52 (64)	.26 (6.5)	
-100-	▶ TL-100-01-Z0	1.18 (30)	2.52 (64)	.26 (6.5)		

\*For moving end (ball) only suitable for Series TRL/TRLF

TL-30-XX

TL-40-XX

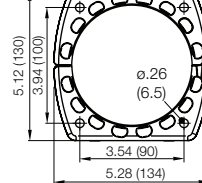
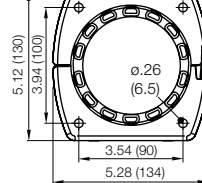
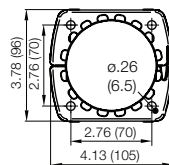
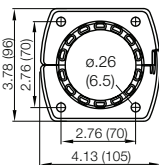
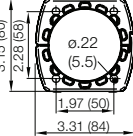
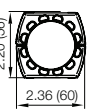
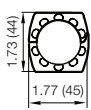
TL-60-XX

TL-65-XX

TL-70-XX

TL-85-XX

TL-100-XX



PDF: [www.igus.com/e-chain-pdfs](http://www.igus.com/e-chain-pdfs)  
Specs/CAD/RFQ: [www.igus.com/e-chains](http://www.igus.com/e-chains)  
RoHS info: [www.igus.com/RoHS](http://www.igus.com/RoHS)

