

iglidur® Clips2 – easy assembly due to angle slot



Available from stock

Low bearing clearance, high precision

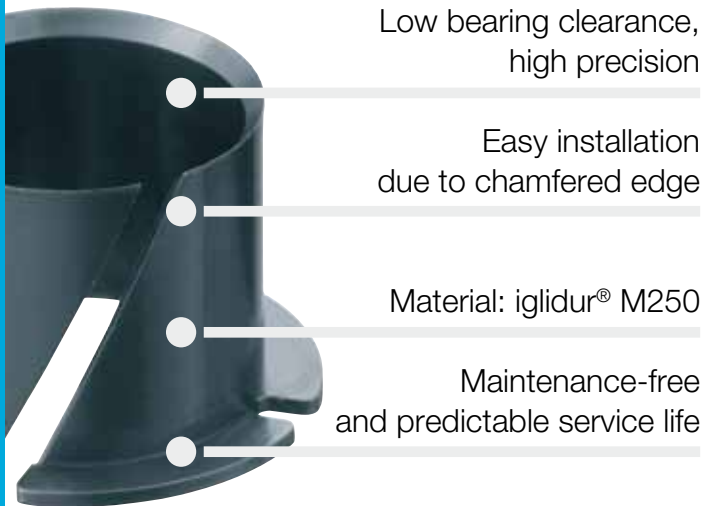
Easy installation due to chamfered edge

Material: iglidur® M250

Maintenance-free and predictable service life

iglidur® Clips2

Easy assembly due to angle slot. These iglidur® M250 self lubricating plain bearings give impact strength, vibration dampening, and wear resistant properties. The bearings are designed for use in applications which vibration dampening is necessary, for example, in fitness and packaging machines.



When to use it?

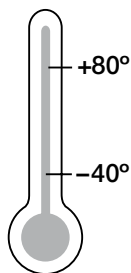
- When a simple assembly (by hand) is required
- When there is a very imprecise housing bore
- When a simple and cost effective bearing solution is sought



When not to use it?

- When the bearing should be secured by press fit
 - ▶ **iglidur® M250, page 107**
- When continuous temperatures of above +80° C occur
 - ▶ **iglidur® G, page 61**
- When extremely high surface pressures occur
 - ▶ **iglidur® G, page 61**

Temperature



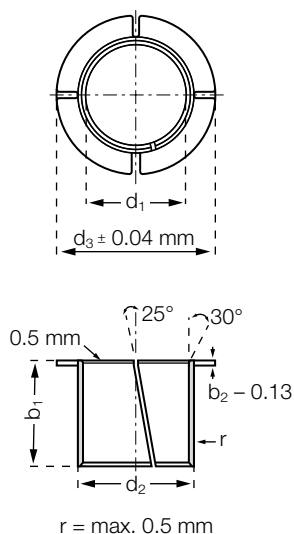
Product range

1 style
 Ø 4–25 mm
 more dimensions
 on request



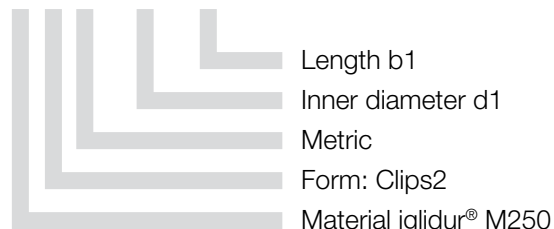
iglidur® Clips2 | Product Range

Clips2



Order key

MYM-04-04



Material:

iglidur® M250 ► page 107

Dimensions [mm]

Part number	d1	d1-Tolerance*	d2**	d3 ±0.40	b1 -0.40	b2 -0.13
MYM-04-04	4	+0.025/+0.075	5.20	7.00	4.00	0.60
MYM-05-05	5	+0.025/+0.075	6.20	8.00	5.00	0.60
MYM-06-06	6	+0.025/+0.075	7.20	9.50	6.00	0.60
MYM-08-08	8	+0.025/+0.075	9.60	12.00	8.00	0.80
MYM-10-10	10	+0.025/+0.075	11.60	15.00	10.00	0.80
MYM-12-12	12	+0.025/+0.075	13.60	18.00	12.00	0.80
MYM-14-14	14	+0.025/+0.075	15.60	21.00	14.00	0.80
MYM-16-16	16	+0.025/+0.075	17.60	24.00	16.00	0.80
MYM-20-20	20	+0.025/+0.075	21.60	30.00	20.00	0.80
MYM-25-25	25	+0.025/+0.075	27.40	37.50	25.00	1.20

* d1 measurement is measured with a plug gauge after fitting into a reference housing d2 (+0.005)

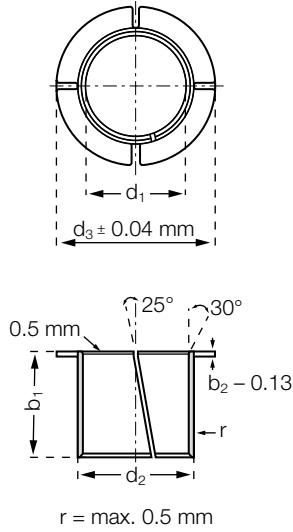
** Recommended housing bore tolerance: H9

 **delivery** available
time from stock

 **prices** price list online
www.igus.co.uk/en/clips2

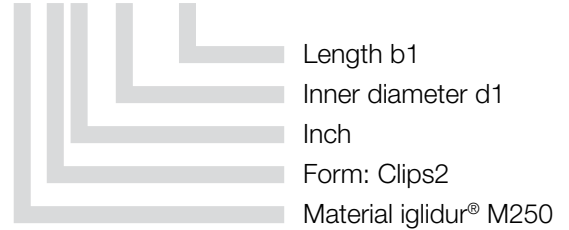
 **order** part number
example MYM-04-04

Clips2



Order key

MYI-04-04



Material:

iglidur® M250 ► page 107

Dimensions [Inch]

Part number	d1	Shaft diameter		d2	Housing bore		d3	b1	b1- Tolerance	b2
		min.	max.		min.	max.				
MYI-03-03	3/16	.1875	.1865	0.2339	.2351	.2339	19/61	3/16	-0.016	0.0252
MYI-04-04	1/4	.0025	.2490	0.2965	.2979	.2965	13/32	1/4	-0.016	0.0252
MYI-05-05	5/16	.3125	.3115	0.3744	.3758	.3744	1/2	5/16	-0.017	0.0299
MYI-06-06	3/8	.3750	.3740	0.4370	.4387	.4370	19/32	3/8	-0.017	0.0299
MYI-07-07	7/16	.4375	.4365	0.4996	.5013	.4996	21/32	7/16	-0.017	0.0299
MYI-08-06	1/2	.5000	.4990	0.5618	.5635	.5618	3/8	3/4	-0.018	0.0299
MYI-08-08	1/2	.5000	.4990	0.5618	.5635	.5618	3/4	1/2	-0.018	0.0299
MYI-10-07	5/8	.6250	.6240	0.6870	.6887	.6870	15/16	7/16	-0.018	0.0299
MYI-10-10	5/8	.6250	.6240	0.6870	.6887	.6870	15/16	5/8	-0.018	0.0299
MYI-10-18	5/8	.6250	.6240	0.6870	.6887	.6870	15/16	1 1/8	-0.018	0.0299
MYI-12-12	3/4	.7500	.7490	0.8118	.8139	.8118	1 1/8	3/4	-0.019	0.0299
MYI-12-18	3/4	.7500	.7490	0.8118	.8139	.8118	1 1/8	1 1/8	-0.019	0.0299
MYI-14-7.5	7/8	.8750	.8740	0.9370	.9391	.9370	1 5/16	15/32	-0.019	0.0299
MYI-14-14	7/8	.8750	.8740	0.9370	.9391	.9370	1 5/16	7/8	-0.019	0.0299
MYI-16-14	1	1.0000	.9985	1.0933	1.0954	1.0933	1 1/2	7/8	-0.020	0.0449
MYI-16-16	1	1.0000	.9985	1.0933	1.0954	1.0933	1 1/2	1	-0.020	0.0449

delivery available from stock

prices price list online
www.igus.co.uk/en/clips2

order part number
example MYI-04-04