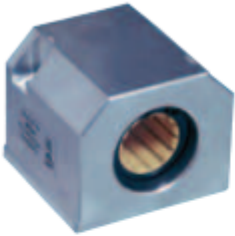
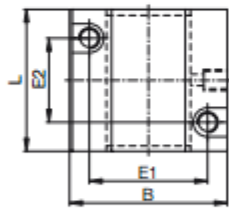
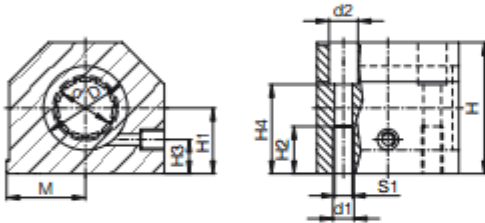


Closed, long design



- Housing: Aluminum, equipped with 2 drylin® R linear plain bearings



Order key

RGA-01-08



Inner-Ø
01: Standard with RJUM-01
03: with RJUM-03
04: with RJM-01
Aluminum housing
Linear housing with RJUM bearings



Please note:
Installation instructions ► page 983

Dimensions [mm]

Part number	Self-aligning	All polymer bearing	d	D	H	H1	H2	H3	H4	S1	B	L	M	E1	E2	d1	d2
Standard with RJUM-01	with RJUM-03	with RJM-01		H6		+0.01								±0.3	±0.02	±0.15	±0.15
RGA-01-08	-	RGA-04-08	8	16	28	13	10	8	14	M4	35	32	17.5	25	20	3.2	6
RGA-01-12	RGA-03-12	RGA-04-12	12	22	35	18	11	10	25	M5	43	39	21.5	32	23	4.2	6
RGA-01-16	RGA-03-16	RGA-04-16	16	26	42	22	13	12	30	M6	53	43	26.5	40	26	5.2	10
RGA-01-20	RGA-03-20	RGA-04-20	20	32	50	25	18	13	34	M8	60	54	30.0	45	32	6.8	11
RGA-01-25	RGA-03-25	RGA-04-25	25	40	60	30	22	15	40	M10	78	67	39.0	60	40	8.6	15
RGA-01-30	RGA-03-30	RGA-04-30	30	47	70	35	22	16	48	M10	87	79	43.5	68	45	8.6	15
RGA-01-40	RGA-03-40	RGA-04-40	40	62	90	45	26	20	60	M12	108	91	54.0	86	58	10.3	18

Are equipped with:



RJUM-01



RJUM-03



RJM-01

Can be combined with:



RJUM-06