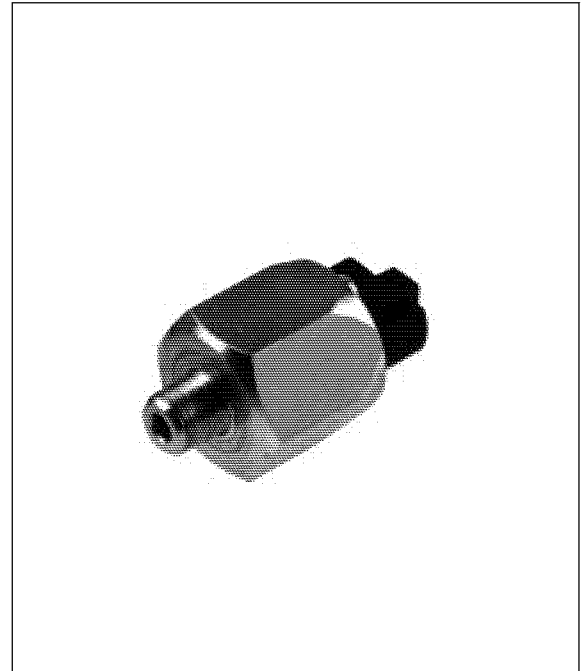


Electric Vacuum Switches

- **Quick, easy installation**
- **Converts vacuum signal into electrical output**
- **Robust construction**
- **Very compact size**


Technical Data

Medium:

Vacuum

Operation:

M/58024/VB Normally open

M/58024/VF Normally closed

Adjustment:

-0,2 to -1 bar

Repeatability:

±0,1 bar

Differential Reset Pressure:

Up to 0,2 bar

Operating Temperature:

-20°C to +80°C

Switching Voltage:

250 V d.c./ a.c.

Switching Current:

2 A maximum

Protection Rating:

IP 55 (DIN 40050)

Switching Frequency:

200/min

Weight:

0,09 kg

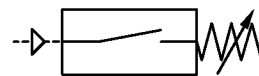
Materials:

Zinc plated steel body, silicone diaphragm

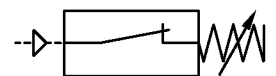
Ordering Information

To order an electric vacuum switch (normally open)
quote: M/58024/VB

To order an electric vacuum switch (normally closed)
quote: M/58024/VF



M/58024/VB



M/58024/VF

