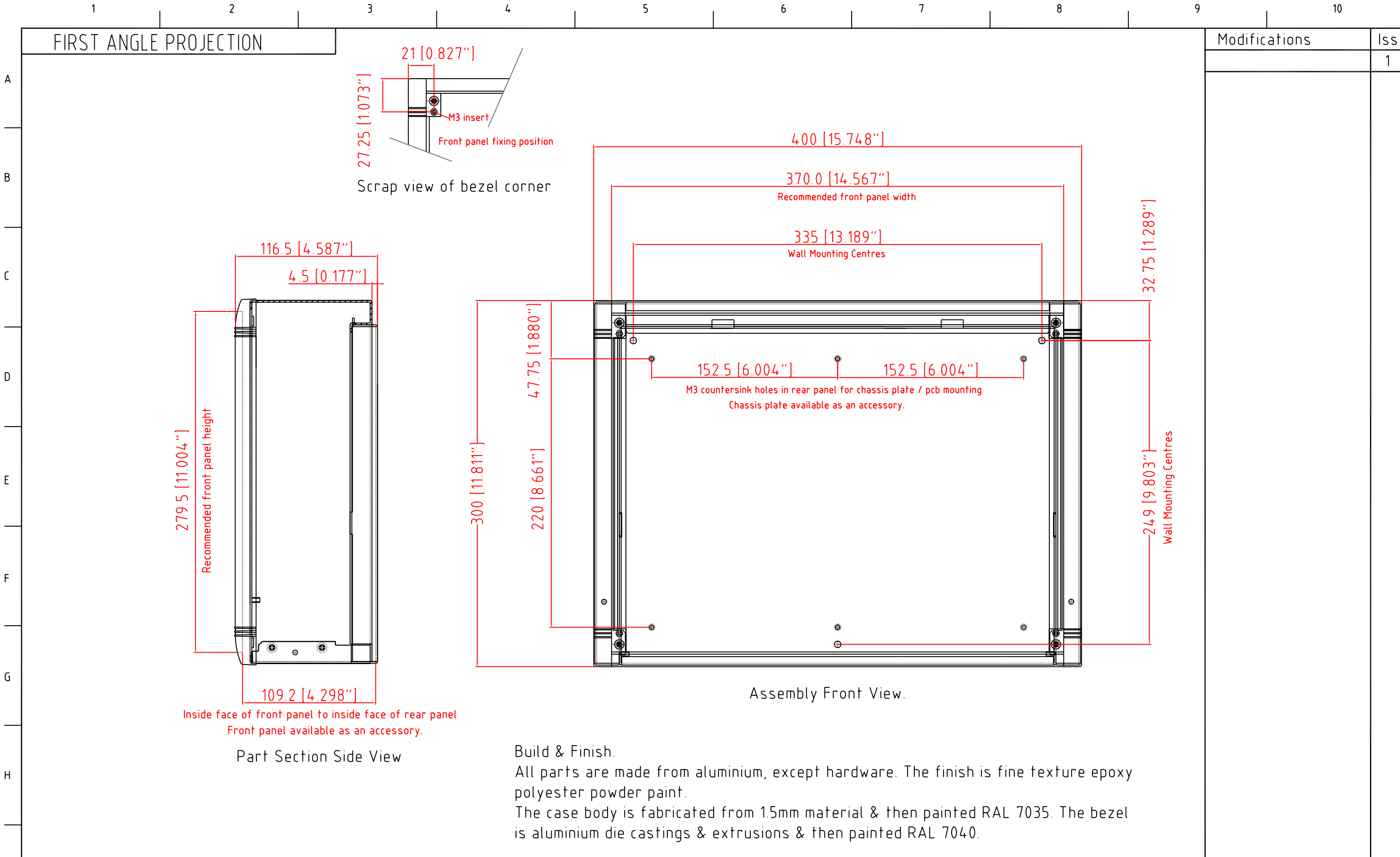


FIRST ANGLE PROJECTION



Inside face of front panel to inside face of rear panel  
Front panel available as an accessory.

Part Section Side View

Assembly Front View.

**Build & Finish.**

All parts are made from aluminium, except hardware. The finish is fine texture epoxy polyester powder paint.  
The case body is fabricated from 1.5mm material & then painted RAL 7035. The bezel is aluminium die castings & extrusions & then painted RAL 7040.

Geometry is set as blocks.  
Each view has:  
the rear cover/base - green  
the side / top cover - magenta  
the bezel assembly - blue

Modifications	Iss
	1

Tolerances unless otherwise stated: General tolerances ±0.20 Resultant tolerances between hole centers ±0.15 Tolerances on hole diameters ±0.05 Angles ± 0.5° Surface finish 32/	Required Finish See note	Scale 1:1	ALL DIMENSIONS IN MILLIMETRES (Inches in brackets)		DO NOT SCALE
	Drawn by: Ian Cox	Checked By:	Drawing Number	Date drawn: January '07	Material Spec. See note
<b>METcase</b> www.metcase.com		METCASE ENCLOSURES 15 Brunel Way, Segensworth East, Fareham, Hampshire, PO15 5TX, UK.		Part Name Datamet L	Sheet 1 of 1
				Part Number M584.0105	
©OKW ENCLOSURES LTD (DATE AS SHOWN). THIS DRAWING CONTAINS PROPRIETARY INFORMATION OF OKW ENCLOSURES LTD AND IS TENDERED SUBJECT TO THE FOLLOWING CONDITIONS: THE INFORMATION BE RETAINED IN CONFIDENCE, NOT BE REPRODUCED OR COPIED, AND NOT BE USED OR INCORPORATED IN ANY PRODUCT, UNLESS PERMISSION IS OBTAINED IN WRITING FROM OKW ENCLOSURES LTD.					A0