

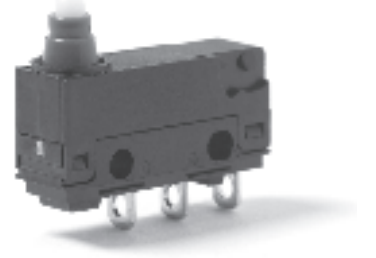
# V4L

## Snap-action Microswitches

Subminiature

### V4L

|                 |  |
|-----------------|--|
| Characteristics | <ul style="list-style-type: none"><li>■ Long overtravel of 2.2 mm minimum</li><li>■ Available sealed to IEC 1167</li><li>■ Prewired option available</li></ul> |
| Rating          | 250 VAC, 5 A   |
| Dimensions (mm) | 20 x 6,4 x 16,4  |
| Actuator        | Plain lever, Ice break lever   |
| Approvals       | VDE (EN)   |



### Preferred Range

| Ordering Reference | Actuating Force (N) | Actuating Force (ozf) | Sealing  | Operating pos. (mm) | Terminal     | Circuit | Actuator    | Contacts    | Electrical rating |
|--------------------|---------------------|-----------------------|----------|---------------------|--------------|---------|-------------|-------------|-------------------|
| V4LSK2             | 2.5                 | 9.0                   | IP6K7    | 11,7 ± 0,4          | Cable 500 mm | CO      | Plunger     | Fine silver | 250 VAC, 5 A      |
| V4LSK2A1           | 2.5                 | 9.0                   | IP6K7    | 14,5 ± 0,8          | Cable 500 mm | CO      | Plain lever | Fine silver | 250 VAC, 5 A      |
| V4LSK2A2           | 2.0                 |                       | IP6K7    | 16,5 ± 1,0          | Cable 500 mm | CO      | Plain lever | Fine silver | 250 VAC, 5 A      |
| V4LST7             | 2.5                 | 9.0                   | IP6K7    | 11,7 ± 0,4          | Solder       | CO      | Plunger     | Fine silver | 250 VAC, 5 A      |
| V4LST7A1           | 2.5                 |                       | IP6K7    | 14,5 ± 0,8          | Solder       | CO      | Plain lever | Fine silver | 250 VAC, 5 A      |
| V4LST7A2           | 2.0                 |                       | IP6K7    | 14,6 ± 1,0          | Solder       | CO      | Plain lever | Fine silver | 250 VAC, 5 A      |
| V4LT7              | 2.4                 | 8.6                   | No digit | 11,7 ± 0,4          | Solder       | CO      | Plunger     | Fine silver | 250 VAC, 5 A      |



### Operating Characteristics

| Actuator                      | Reference | Actuating Force Maximum   |                  | Release Force Minimum |       | Free Position Maximum |       | Operating Position |              | Movement Differential Maximum |       | Total overtravel Position |      | Overtravel |      |
|-------------------------------|-----------|---|------------------|-----------------------|-------|-----------------------|-------|--------------------|--------------|-------------------------------|-------|---------------------------|------|------------|------|
|                               |           | (N)   | (ozf)            | (N)                   | (ozf) | (mm)                  | (in)  | (mm)               | (in)         | (mm)                          | (in)  | (mm)                      | (in) | (mm)       | (in) |
| Plunger                       | V4LT7     | 2,4   | 8,60             | 0,4                   | 1,44  | 12,9                  | 0,507 | 11,7 ± 0,4         | 0,46 ± 0,012 | 0,9                           | 0,023 | 9,2                       | 0,36 | 2,2        | 0,09 |
|                               | V4LST7    | 2,5   | 9,00             | 0,5                   | 1,78  | 12,9                  | 0,507 | 11,7 ± 0,4         | 0,46 ± 0,012 | 0,9                           | 0,023 | 9,2                       | 0,36 | 2,2        | 0,09 |
| A1 Lever                      | V4L...    | 2,4   | 8,60<br>max. 2,5 | 0,4                   | 1,44  | 14,5                  | 0,57  | 12,6 ± 0,8         | 0,59 ± 0,03  | 1,0                           | 0,04  |                           |      |            |      |
|                               | V4LS...   |   |                  | 0,5                   | 1,78  | 14,5                  | 0,57  | 12,6 ± 0,8         | 0,59 ± 0,03  | 1,0                           | 0,04  |                           |      |            |      |
| Width of lever 4.0 mm/0.16 in |           |   |                  |                       |       |                       |       |                    |              |                               |       |                           |      |            |      |
| A2 Lever                      | V4L...    | 1,5   |                  | 0,3                   | 1,08  | 16,5                  | 0,65  | 13,5 ± 1,0         | 0,53 ± 0,04  | 1,3                           | 0,05  |                           |      | 2,9        | 1,1  |
|                               | V4LS...   | 2   |                  | 0,3                   | 1,08  | 16,5                  | 0,65  | 13,5 ± 1,0         | 0,53 ± 0,04  | 1,3                           | 0,05  |                           |      | 2,9        | 1,1  |
| Width of lever 4.0 mm/0.16 in |           |   |                  |                       |       |                       |       |                    |              |                               |       |                           |      |            |      |
| F Lever                       | V4L...    | For positions and forces of this actuator please contact Saia-Burgess |                  |                       |       |                       |       |                    |              |                               |       |                           |      |            |      |
|                               | V4LS...   |   |                  |                       |       |                       |       |                    |              |                               |       |                           |      |            |      |
| Width of lever 4.0 mm/0.16 in |           |   |                  |                       |       |                       |       |                    |              |                               |       |                           |      |            |      |

### Ordering Reference

|   |           |  |
|---|-----------|--|
| Type                                    | V4L       |  |
| Environmental Protection                | No digit  | IP40   |
|   | S         | IP67   |
| Terminals                               | T7 Solder | 0,5 x 2,95   |
|   | T8 Solder | 0,8 x 0,5  |
| All other terminals on special request. |           |  |
| Cover                                   | K2        | 8,7 mm max.  |
|   | K3        | 10,7 mm max.   |
| Circuit                                 | No digit  | Change-over  |
|   | C2        | Normally closed                                      |
|   | C4        | Normally open  |
| Mounting                                | No digit  | Mounting holes<br>Please request dimensional drawing |
| Actuators                               | No digit  | Plunger  |
|   | A1        | Plain lever 20.0 mm (0.79 in)                        |
|   | A2        | Plain lever 30.0 mm (1.18 in)                        |
|   | AC1       | Cam follower 23.0 mm (0.9 in)                        |
|   | F         | Spring lever 20.0 mm (0.79 in)                       |
| Contacts                                | No digit  | Silver   |
|   | AUX       | Gold alloy on silver palladium crosspoint            |
|   | AgNi1     | Silver nickel  |
|   |           |  |