

MS116, MS132, MO132, MS4xx, MO4xx, MS325, MO325

General accessories

2



MSHD-LB

2CDC241003F0011



MSHD-LY

2CDC241002S0011



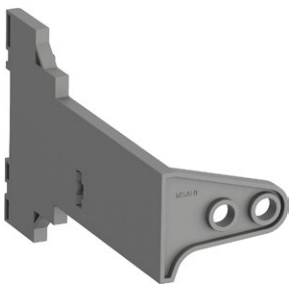
MSMN

2CDC241004F0011



MSH-AR

2CDC241001F0012



MSAH1

2CDC241017V0013

Description

With this solution of door coupling rotary mechanism it is possible to operate a manual motor starter in the back of a switch cabinet from outside. The door coupling mechanism prevents opening of the door of a switch cabinet with the manual motor starter in ON position.

The complete mechanism includes handle, shaft, driver, shaft alignment ring and shaft supporter.

All accessories fit for 6 mm shafts with a maximum length of 180 mm. The degree of protection for handles MSHD is IP64.

Ordering details

Suit-able for	Description	Shaft length mm	Color	Type	Order code	Pkg qty	Weight (1 pcs) kg
Shafts							
MS116,	For MSHD handles. Shaft diameter 6 mm. Shaft extension for door coupling driver.	85		OXS6X85	1SCA101647R1001	1	0.020
MS132,		105		OXS6X105	1SCA108043R1001	1	0.020
MO132,		130		OXS6X130	1SCA101655R1001	1	0.030
MS4xx,		180		OXS6X180	1SCA101659R1001	1	0.040
MO4xx,							
MS325,							
MO325							
IP64 handles (UL: Type 1, 3R, 12)							
MS116,	Padlockable max. 3 padlocks with bail diameter 5 ... 8 mm, door interlock in ON position defeatable, for use with 6 mm OXS6...types up to 180 mm or driver shafts MSOX.		Black	MSHD-LB ¹⁾	1SAM201920R1001	1	0.065
MS132,			Yellow	MSHD-LY ¹⁾	1SAM201920R1002	1	0.065
MO132,			Black	MSHD-LTB ²⁾	1SAM201920R1011	1	0.065
MS4xx,			Yellow	MSHD-LTY ²⁾	1SAM201920R1012	1	0.065
MO4xx,							
MS325,							
MO325							
Driver							
MS116,	Coupling driver for use with 6 mm OXS6... types up to 180 mm.			MSMN ³⁾	1SAM101923R0002	1	0.002
MS132,				MSMNO ⁴⁾	1SAM101923R0012	1	0.002
MO132,							
MS4xx,							
MO4xx,							
MS325,							
MO325							
Shaft alignment ring							
MS116,	The MSH-AR supports the long shafts for alignment to the handle inlet. It makes closing panel doors more easy. Use for OXS6X > 105 mm.			MSH-AR	1SAM201920R1000	1	0.010
MS132,							
MO132,							
MS4xx,							
MO4xx,							
MS325,							
MO325							
Shaft supporter							
MS116,	With the MSAH1 it is possible to support the shaft in the extension of handle (MSHD). It is mandatory for the usage of shafts >130 mm.			MSAH1	1SAM201909R1021	1	0.035
MS132,							
MO132							

¹⁾ Indication I-O and ON-OFF (recommended for MS116, MS4xx, MO4xx)

²⁾ Indication I-O and ON-OFF + Trip indication

³⁾ Coded - Positioning of ON indication dependent from mounting orientation of the MMS

⁴⁾ Uncoded - Positioning of ON indication independent from mounting orientation of the MMS