



SERIES 1550 - SINGLE AND DOUBLE-POLE ROCKER SWITCHES

TO 16 (4) A 250 V AC



PRODUCT FEATURES

- Inrush currents (capacitive) up to 100 A
- Two housing variants (with flange or lower lying)
- With mechanical forced opening
- Illuminated window with lens effect

ON REQUEST



- Other colors
- Other rocker labelings
- Other lamp variants
- Conformity IEC 60065 chap. 14.6
- Special rockers
- Cable assembly

Mechanical life endurance	5E4
Inrush current (capacitive)	100 A
Contact distance	≥ 3 mm
Contact resistance (new condition)	< 100 mOhm (1 A 12 V DC)
Insulation resistance (new condition)	> 100 MOhm (500 V DC)
Proof tracking	250 PTI
Protection type	IP 40
Ambient temperature	terminal side -20 °C ... +100 °C actuating side -20 °C ... +55 °C
Flammability	UL 94 V-2 UL 94 V-0 (product-dependent)
Glow wire test temperature	850 °C
Material actuator housing	PA PA
Plug force of the terminals	≤ 80 N
Approval marks	
Suitable for appliances of protection class II	



SERIES 1550 - SINGLE AND DOUBLE-POLE ROCKER SWITCHES

TO 16 (4) A 250 V AC

 single-pole 		Lighting voltage (V)	Actuator color / printing	Housing color	7 A 250 V AC 5E4	16 (4) A 250 V AC 5E4	16 (4) A 250 V AC 1E4	10 (4) A 250 V AC 5E4	10 (4) A 250 V AC 25E3	10 A 12 V DC	20 mA 250 V AC 5E4	20 A 250 V AC 2 HP	20 A 125 V AC 1 HP	16 A 250 V AC 2 HP	16 A 125 V AC 1 HP	Terminal type	Terminal description	Contact material	EN 60335 cap. 30 conform "G"	Miscellaneous	Stock version
ON / OFF switch (SPST)																					
1550.3102	230					○	○							○			6.3	Ag			
1550.3609	12								○								6.3	Ag		lower lying flange	
1551.3102						○	○							○	○		6.3	Ag	○		○
1551.3103						○	○							○	○		6.3	Ag			
1551.3106						○	○							○	○		6.3	Ag			
1551.2654										○								Au		approvals KEMA lower lying flange	
Normally closed contact (SPNC)																					
1581.1303					○									○	○		6.3	Ag	○	increased life endurance at a high electrical rating	
1551.1303						○	○							○	○		6.3	Ag			
Normally open contact (SPNO)																					
1551.3202						○	○							○	○		6.3	Ag			○
1551.3702						○	○							○	○		6.3	Ag		lower lying flange	

ROCKER SWITCHES
PUSHBUTTON SWITCHES
TOGGLE SWITCHES
SLIDE SWITCHES
ROTARY SWITCHES
FOOT SWITCHES
TACT AND KEY SWITCHES
SNAP-ACTION SWITCHES
MICRO-SIGNAL SWITCHES
SENSORS
ECO
PUSH N' DRIVE



SERIES 1550 - SINGLE AND DOUBLE-POLE ROCKER SWITCHES

TO 16 (4) A 250 V AC

 double-pole		Lighting voltage (V)	Actuator color / printing	Housing color	7 A 250 V AC 5E4	16 (4) A 250 V AC 5E4	16 (4) A 250 V AC 1E4	10 (4) A 250 V AC 5E4	10 (4) A 250 V AC 25E3	10 A 12 V DC	20 mA 250 V AC 5E4	20 A 250 V AC 2 HP	20 A 125 V AC 1 HP	16 A 250 V AC 2 HP	16 A 125 V AC 1 HP	Terminal type	Terminal description	Contact material	EN 60335 cap. 30 conform "G"	Miscellaneous	Stock version
ON / OFF switch (DPST)																					
1555.3102	230					○	○					○	○	○			6.3	Ag	○		○
1555.3104	230					○	○							○			6.3	Ag			○
1555.3108	230					○	○							○			6.3	Ag			○
1555.3604	230					○	○							○			6.3	Ag		lower lying flange	
1555.4608	230					○	○							○				Ag		lower lying flange	
1555.8104	230					○	○							○			6.3	Ag		flange dimension 31.5 x 17 mm	
1555.3125	115					○	○					○	○	○			6.3	Ag	○		
1555.3109	110													○			6.3	Ag			
1555.3120	110													○			6.3	Ag			
1555.3111	12								○								6.3	Ag			
1552.0102						○	○							○	○			Ag			○
1552.2601						○	○							○	○			Ag		lower lying flange	
1552.2602						○	○							○	○			Ag	○	lower lying flange	○
1552.3102						○	○							○	○		6.3	Ag			○
1552.3104						○	○							○	○		6.3	Ag			
1552.3112						○	○							○	○		6.3	Ag	○	conformant with EN 60065 par. 14.6	○
1552.3117						○	○					○	○	○	○		6.3	Ag	○		
1552.3602						○	○							○	○		6.3	Ag		lower lying flange	○
1552.4602						○	○							○	○			Ag		lower lying flange	○
1552.4702						○	○							○	○			Ag		2 PCB holders lower lying flange	
1552.4802						○	○							○	○			Ag		lower lying flange	

ROCKERSWITCHES

PUSHBUTTON SWITCHES

TOGGLE SWITCHES

SLIDE SWITCHES

ROTARY SWITCHES

FOOT SWITCHES

TACT AND KEY SWITCHES

SNAP-ACTION SWITCHES

MICRO-SIGNAL SWITCHES

SENSORS

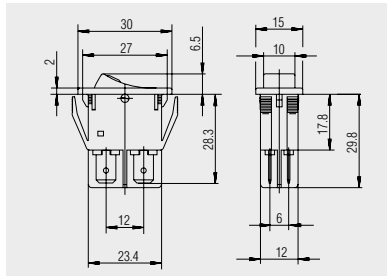
ECO

PUSH'N'DRIVE



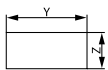
SERIES 1550 - SINGLE AND DOUBLE-POLE ROCKER SWITCHES

TO 16 (4) A 250 V AC



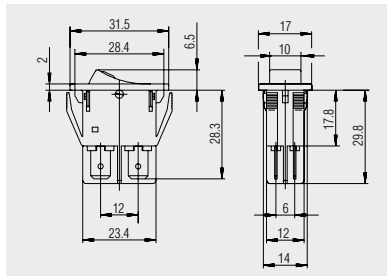
Basic types 1550 and 1555
single and double-pole

Quick-connect terminal 6.3 x 0.8



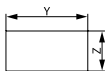
X = Wall thickness

x	y	z
0.8 ... 5.0	27.2 ^{+0.1}	12.2 ^{+0.2}



1555.8104
double-pole

Quick-connect terminal 6.3 x 0.8
cover frame 31.5 x 17 mm



X = Wall thickness

x	y	z
0.8 ... 5.0	28.6 ^{+0.1}	14 ^{+0.2}

ROCKER SWITCHES
PUSHBUTTON SWITCHES
TOGGLE SWITCHES
SLIDE SWITCHES
ROTARY SWITCHES
FOOT SWITCHES
TACT AND KEY SWITCHES
SNAP-ACTION SWITCHES
MICRO-SIGNAL SWITCHES
SENSORS
ECO
PUSH N' DRIVE

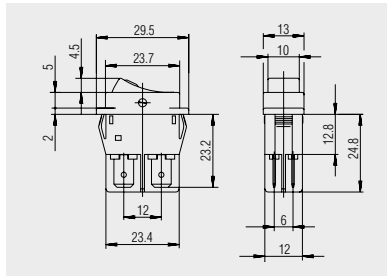


SERIES 1550 - SINGLE AND DOUBLE-POLE ROCKER SWITCHES

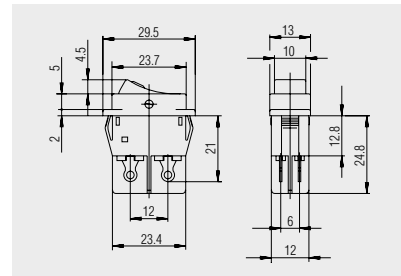
TO 16 (4) A 250 V AC



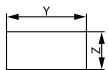
Basic types 1550 and 1555
lower lying flange
single and double-pole



Quick-connect terminal 6.3 x 0.8



Solder terminal

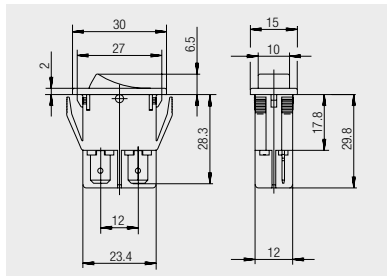


X = Wall thickness

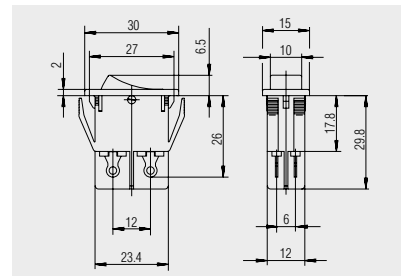
x	y	z
0.75 ... 1.25	26.2 ^{-0.1}	12.4 ^{+0.1}
2 ... 3	26.8 ^{-0.1}	12.4 ^{+0.1}
2 ... 3	26.8 ^{-0.1}	12.4 ^{+0.1}
1.25 ... 2	26.4 ^{-0.1}	12.4 ^{+0.1}



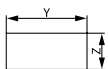
Basic type 1551 and 1552
single and double-pole



Quick-connect terminal 6.3 x 0.8



Solder terminal



X = Wall thickness

x	y	z
0.8 ... 5.0	27.2 ^{+0.1}	12.2 ^{+0.2}

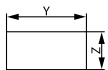


SERIES 1550 - SINGLE AND DOUBLE-POLE ROCKER SWITCHES

TO 16 (4) A 250 V AC

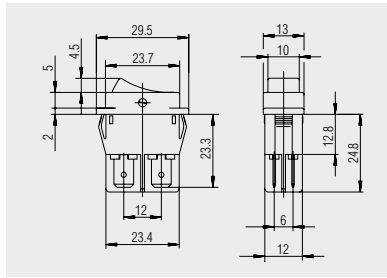


Basic types 1551 and 1552
lower lying flange
single and double-pole

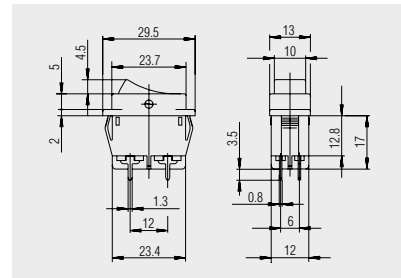


X = Wall thickness

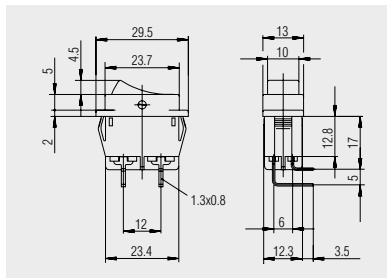
x	y	z
0.75 ... 1.25	26.2 ^{-0.1}	12.4 ^{+0.1}
1.25 ... 2	26.4 ^{-0.1}	12.4 ^{+0.1}
2 ... 3	26.8 ^{-0.1}	12.4 ^{+0.1}



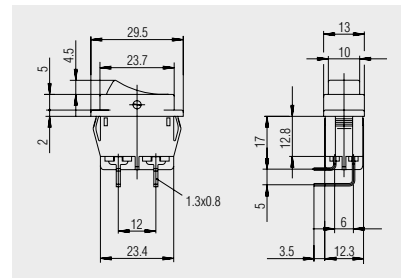
Quick-connect terminal 6.3 x 0.8



PCB terminal



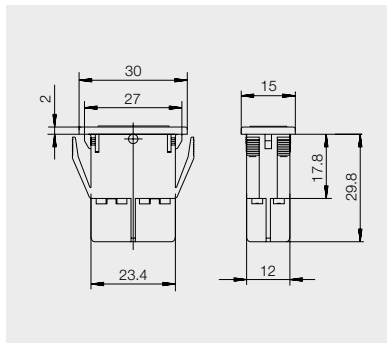
PCB terminal angled



PCB terminal angled mirror-inverted

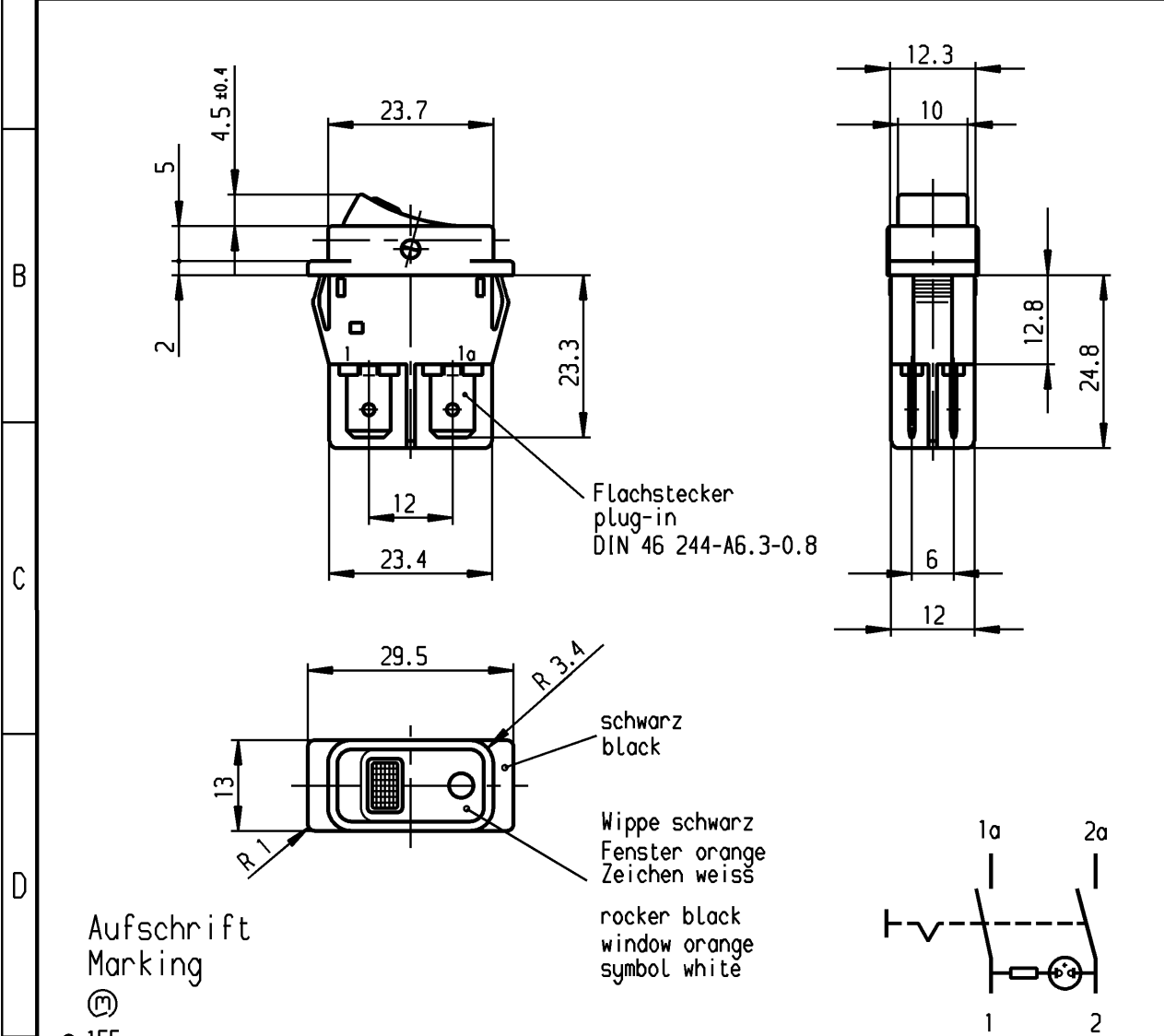


Dummy piece
203.103.013



Dummy piece for series 1550 made of PA

	1	2	3	4
A	Empfohlener Ausschnitt für Rastbefestigung (Grat gegenüber Bestueckungsseite) recommended cut-out for snap-in fixing (edge opposite to snap-in direction)	Wanddicke wall thickness	Ausschnittlänge length of cut-out	Ausschnittbreite width of cut-out
		0.75 to / bis 1.25	26.2 -0.1	12.4 +0.1
		1.25 to / bis 2	26.4 -0.1	12.4 +0.1
		2 to / bis 3	26.8 -0.1	12.4 +0.1



VERTRAULICH-CONFIDENTIAL
 © Alle Rechte bei Marquardt, auch für den Fall von Schutzrechtsmängelungen. Jede Verfügbare, wie Kopier- und Weitergaberecht, bei uns.
 © This document is the exclusive property of Marquardt. Without our consent, it may not be reproduced or given to third parties.

Aufschrift Marking
 (M)
 • 155..
 16(4)/250 ~ T100/55
 10(4)/250 ~ 5E4
 5/100A 250V ~
 05
 16A 250V AC
 2 HP
 R145

Herstellort/-jahr/-woche
 nach DIN EN 60062
 code of manufacture:
 place/year/week acc. to DIN EN 60062

Ausschalter 2-polig
 Glimmlampe mit R_v für 230 V ~
 Für Geräte der Klasse II geeignet

DPST
 neon lamp with R_v for 230V AC
 suitable for appliances of class II

Diese Unterlage ist geistiges Eigentum der Firma Marquardt. Schutzvermerk nach DIN 34 beachten. Copyright reserved.

FÜR Form und Lage FOR SHAPE AND LOC.	FÜR Winkel FOR ANGLE	PROJECTION	Allgemeintoleranzen UNTOLERANCED DIMENSIONS			Pause COPY	Blatt SHEET 01	Typ K	Zeichn./DRAWING NO. 1555.3604	Index
			Abmasse und Nennmassbereiche Angaben in mm	Laengen LENGTH	Radien RADI					
ALL DIMENSIONS ARE IN MILLIMETRES			0-6 ± 0.2	± 0.2	0 10 20 30 mm	A4	Geräteschalter appliance switch	Z	MARQUARDT Marquardt, D-78604 Riethem-Weilheim	
			>6-15 ± 0.4	±						
			>15-30 ± 0.4	±						
			>30-70 ±	±						
			>70-120 ±	±						
			>120-200 ±	±						
c	35129	27.02.03	wj	g						
b	23635	16.01.96	R5	f						
a	21323	24.03.92	Mut	e						
				d	69572	11.02.11	Mut			
Ausg. ISSUE	Anderung REVISION	gez. DRAWN BY	Ausg. ISSUE	Anderung REVISION	gez. DRAWN BY	CAD Medusa		Z		
						gez./DRAWN BY 27.04.88 ZF				
						gepr./CHECKED BY Lr				
						Ersatz für/REPLACEMENT OF				