



SERIES 1855 - MINIATURE DOUBLE-POLE ROCKER SWITCHES

TO 4 (1) A 250 V AC






PRODUCT FEATURES

- Illuminated rocker switches
- Different lamp variants
- Powerful with 50 000 mechanical switching cycles
- Caulked terminals for reliable plugging of the receptacles

ON REQUEST











- Other colors
- Other printing variants
- Other terminal types
- Other lamp variants
- Cable assembly

Mechanical life endurance	5E4
Contact resistance (new condition)	< 100 mOhm (1 A 12 V DC)
Insulation resistance (new condition)	> 100 MOhm (500 V DC)
Proof tracking	250 PTI
Protection type	IP 40
Ambient temperature	terminal side -20 °C ... +85 °C actuating side -20 °C ... +55 °C
Flammability	UL 94 V-2
Glow wire test temperature	850 °C
Material	actuator PA housing PA terminals silver plated
Plug force of the terminals	≤ 80 N
Approval marks	 /  / 
Suitable for appliances of protection class II	



SERIES 1855 - MINIATURE DOUBLE-POLE ROCKER SWITCHES

TO 4 (1) A 250 V AC

 double-pole	Lighting voltage (V)	Actuator color / printing	Housing color	4 (1) A 250 V AC 1E4			Terminal type	Terminal description	Contact distance (mm)	Contact material	EN 60335 cap. 30 conform "G"	Stock version
				6 A 125 V AC 1/10 HP	4 A 250 V AC 1/10 HP							
ON / OFF switch (DPST)												
1855.0102	230			○	○	⊕		≥ 3	Ag		○	
1855.0108	230			○	○	⊕		≥ 3	Ag		○	
1855.1102	230			○	○	⊕	4.8	≥ 3	Ag		○	
1855.1104	230			○	○	⊕	4.8	≥ 3	Ag		○	
1855.1108	230			○	○	⊕	4.8	≥ 3	Ag		○	
1855.1115	230			○	○	⊕	4.8	≥ 3	Ag	○		
1855.1118	230			○	○	⊕	4.8	≥ 3	Ag	○		
1855.1122	110				○	⊕	4.8	≥ 3	Ag			
1855.1124	110				○	⊕	4.8	≥ 3	Ag			

ROCKERSWITCHES
 PUSHBUTTON SWITCHES
 TOGGLE SWITCHES
 SLIDE SWITCHES
 ROTARY SWITCHES
 FOOT SWITCHES
 TACT AND KEY SWITCHES
 SNAP-ACTION SWITCHES
 MICRO-SIGNAL SWITCHES
 SENSORS
 ECO
 PUSH N' DRIVE

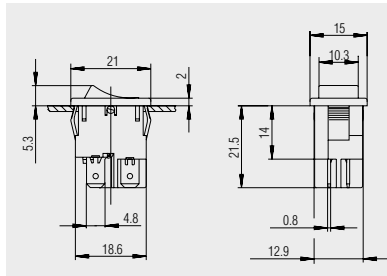


SERIES 1855 - MINIATURE DOUBLE-POLE ROCKER SWITCHES

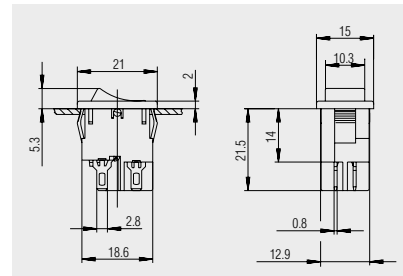
TO 4 (1) A 250 V AC



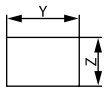
Basic type 1855



Quick-connect terminal 4.8 x 0.8



Solder terminal

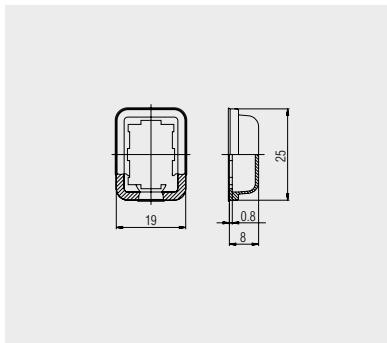


X = Wall thickness

x	y	z
0.75 ... 1.25	19.2 ^{-0.1}	12.9 ^{+0.1}
1.25 ... 2	19.4 ^{-0.1}	12.9 ^{+0.1}
2 ... 3	19.8 ^{-0.1}	12.9 ^{+0.1}



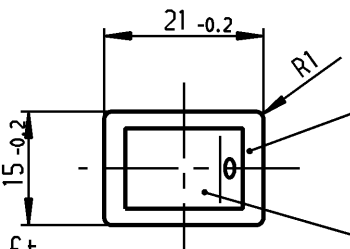
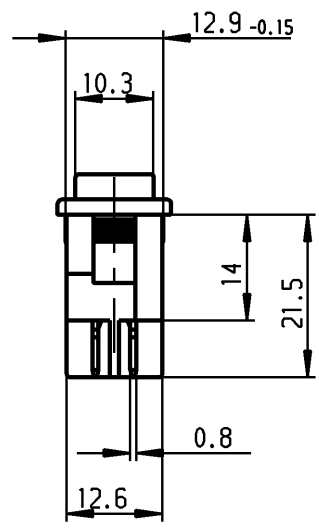
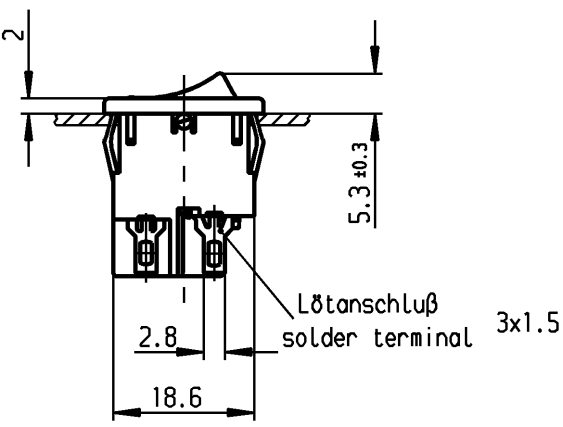
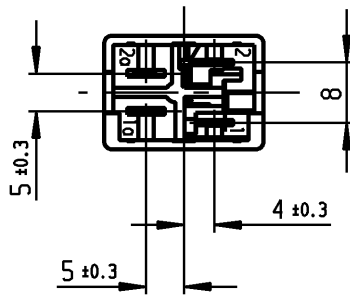
Protection cap
203.089.011



Transparent PVC-protection cap.
Serves as dust and water protection
for the actuating side.

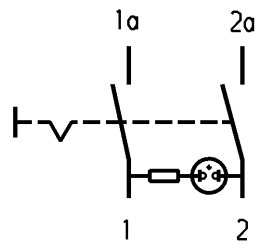
1	2	3	4
Empfohlener Ausschnitt für Rastbefestigung (Grat gegenüber Bestückungsseite) recommended cut-out for snap-in fixing (edge opposite to snap-in direction)	Wanddicke wall thickness	Ausschnittlänge length of cut-out	Ausschnittbreite width of cut-out
	0.75 to / bis 1.25	19.2 -0.1	12.9 +0.1
	1.25 to / bis 2	19.4 -0.1	12.9 +0.1
	2 to / bis 3	19.8 -0.1	12.9 +0.1

VERTRAULICH-CONFIDENTIAL
 © Alle Rechte bei Marquardt, auch fuer den Fall von Schutzrechtsanmeldungen. Jede Verfuegungsbefugnis, wie Kopier- und Weitergaberecht, bei uns.
 © This document is the exclusive property of Marquardt. Without our consent, it may not be reproduced or given to third parties.



schwarz
black

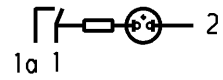
Wippe rot transp.
Zeichen weiß
rocker red transp.
symbol white



Aufschrift
Marking

1855.
4(1)/250~ T85/55
05

4A 250V AC
1/10 HP
R69



Ausschalter 2-polig
Glimmlampe mit R_v für 230V~
Für Geräte der Klasse II geeignet

DPST
neon lamp with R_v for 230V AC
suitable for appliances of class II

Herstellort/-jahr/-monat nach
code of manufacture
place/year/month acc. to:
DIN EN 60062

Schutzvermerk
nach DIN 34 beachten
COPYRIGHT RESERVED

Allgemeintoleranzen/UNTOLERANCED DIMENSIONS					PROJECTION 	Pause COPY	Blatt SHEET Original DIN A4 Maßstab SCALE 1:1	Zeichn./DRAWING NO. K 1855.0102
Für Längen und Radien FOR LENGTHS AND RADII.	Abmaße in mm für Nennmaßbereich in mm ALL DIMENSIONS ARE IN MILLIMETRES							
±	bis/UP TO 6	über/OVER 6 bis/UP TO 30	über/OVER 30					
	0.2	0.4	.					
d	27320	01.02.00	mf	i				
c	26582	04.11.98	BB	h				
b	23374	22.05.95	Mut	g				
a	22297	29.06.93	Mut	f	66876	20.01.10	hhe	
				e	63303	27.05.09	hhe	
Ausg. ISSUE	Anderung REVISION	gez. DRAWN BY	Ausg. ISSUE	Anderung REVISION	gez. DRAWN BY	Ersatz für/REPLACEMENT OF Zeichng. gl. Nr. vom 06.02.79		
							MARQUARDT Marquardt, D-78604 Riethem-Weilheim	

Geraeteschalter
Appliance Switch