

DATE	SYM	REVISION RECORD	AUTH	DR
09-10-07	A	MARKING CODE REMOVED FROM SLEEVE	JMM	NNC
03-31-08	B	CHANGE TO MATERIALS NOTE #2	JMM	RP

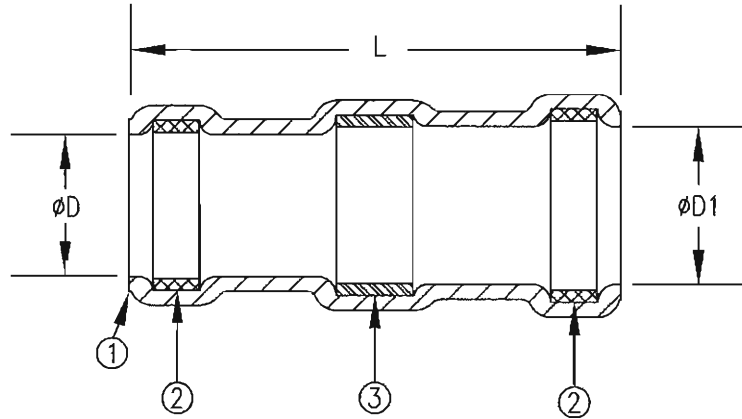



TABLE 1: PRODUCT DETAILS

NAS 1745 PART NUMBER	SUMITOMO PART NUMBER	L ± .062	ØD MINIMUM	ØD1 MINIMUM
1745-13	L-C-1	.625	.075	.095
1745-14	L-C-2	.625	.110	.125
1745-15	L-C-3	.625	.180	.200
1745-23	L-C-4	.750	.235	.255
1745-16	L-C-5	.750	.280	.300
N/A	L-C-5.5	.900	.355	.410
1745-24	L-C-6	1.100	.440	.460
1745-25	L-C-7	1.100	.525	.545

DIMENSIONS ARE IN INCHES TOLERANCES: (EXCEPT AS NOTED)		 SUMITOMO ELECTRIC INTERCONNECT PRODUCTS, INC. 915 ARMORLITE DR., SAN MARCOS, CA 92069	
LINEAR 0.0 = N/A 0.00 = N/A 0.000 = N/A	ANGULAR 0° = N/A 0°0' = N/A 0°00' = N/A		
An STS PRODUCT		TITLE: SOLDER TERMINATION SLEEVE IMMERSION RESISTANT. NAS 1745 QUALIFIED	
DRAWN	R. Parmely	03-31-08	DRAWING NUMBER: L-C-X NAS 1745
APPROVED	Jon M. Mills	03-31-08	REPLACES DWG NO.: NAS 1745 L-C
OTHER REF. NAS 1745	ORIG. DATE 04-16-07	SCALE: NONE	CAD NO. L-C-X NAS 1745 Rev B
		SHEET	REV B 1 OF 2

RECOMMENDED CABLE PREPARATIONS:

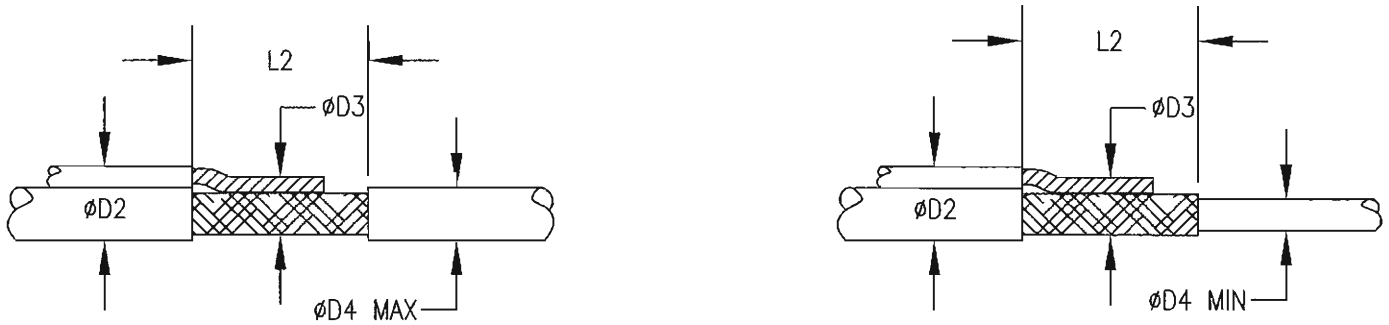


TABLE II: CABLE PREPARATION MEASUREMENTS

SUMITOMO PART NUMBER	ØD2 MAXIMUM	ØD3 MINIMUM	ØD4 MAXIMUM	ØD4 MINIMUM	L2 RANGE
L-C-1	.095	.035	.075	.020	.250-.325
L-C-2	.125	.055	.110	.030	.250-.325
L-C-3	.200	.085	.180	.050	.250-.325
L-C-4	.255	.130	.235	.070	.250-.325
L-C-5	.300	.170	.280	.100	.250-.325
L-C-5.5	.410	.210	.355	.180	.250-.325
L-C-6	.460	.225	.440	.220	.250-.325
L-C-7	.545	.350	.525	.260	.250-.325

MATERIALS:

- ① INSULATION SLEEVE:
HEAT-SHRINKABLE, RADIATION CROSSLINKED, MODIFIED POLYVINYLIDENE FLUORIDE.
COLOR = TRANSPARENT BLUE. EXCEPT L-C-6 & L-C-7 WHERE COLOR = CLEAR.
- ② MELTABLE SEALING RING:
THERMALLY STABILIZED THERMOPLASTIC. COLOR = 1 CLEAR, 1 BLUE.
EXCEPT THE L-C-5.5 COLOR = 2 BLUE.
- ③ SOLDER PREFORM:
ALLOY - Cd18 EUTECTIC AT 143°C. PER ANSI-J-STD-006.
FLUX - ROL1 TYPE RMA FLUX FOR TIN OR SILVER APPLICATIONS. PER ANSI-J-STD-004.

NOTES:

1. THESE PRODUCTS ARE TESTED AND QUALIFIED TO NAS 1745 STANDARDS PLEASE REFER TO THE SUMITOMO ELECTRIC STS INSTALLATION GUIDE FOR RECOMMENDED ASSEMBLY INFORMATION.
2. TEMPERATURE RANGE: -55°C TO +125°C.

DIMENSIONS ARE IN INCHES		 915 ARMORLITE DR., SAN MARCOS, CA 92069	
TOLERANCES: (EXCEPT AS NOTED)			
LINEAR	ANGULAR		
0.0 = N/A	0° = N/A		
0.00 = N/A	0°0' = N/A		
0.000 = N/A	0°00' = N/A		
An STS PRODUCT		TITLE: SOLDER TERMINATION SLEEVE IMMERSION RESISTANT. NAS 1745 QUALIFIED	
DRAWN	R. Parmley	03-31-08	DRAWING NUMBER: L-C-X NAS 1745
APPROVED	Jon M. Mills	03-31-08	REPLACES DWG NO.: NAS 1745 L-C
OTHER REF. NAS 1745	ORIG. DATE 04-16-07	SCALE: NONE	CAD NO. L-C-X NAS 1745 Rev B
		SHEET	2 OF 2