

**Excelon T74 Shut-Off & Lockout Valves
3/8", 1/2", 3/4" Port Sizes**

- **EXCELON design allows in-line or modular installation**
- **T74B 2-port/2-position shut-off valves no exhaust**
- **T74T 3-port/2-position shut-off valves with 1/8" tapped exhaust**
- **T74E 3-port/2-position lockout valves help conform to OSHA Lockout Regulations in USA market. Exhaust outlet is not tapped.**
- **Valves can be locked in the closed position only**
- **Modular installations with EXCELON 72, 73, and 74 series can be made to suit particular applications**



Ordering Information. Models listed have PTF threads.

Port Size	2-Port/2-Position Padlock closed only. No exhaust outlet.	3-Port/2-Position OSHA Padlock closed only. Unthreaded exhaust outlet.	3-Port/2-Position Padlock closed only. Threaded exhaust port.	Weight lbs (kg)
3/8"	T74B-3AA-P1N	T74E-3AA-P1N	T74T-3AA-P1N	0.69 (0.32)
1/2"	T74B-4AA-P1N	T74E-4AA-P1N	T74T-4AA-P1N	0.65 (0.30)
3/4"	T74B-6AA-P1N	T74E-6AA-P1N	T74T-6AA-P1N	0.62 (0.28)

Alternative Models

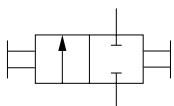
Valve Type	Substitute
2-port/2-position Black slide, No exhaust outlet	B
3-port/2-position Yellow slide, Unthreaded exhaust outlet	E
3-port/2-position Red slide, Threaded exhaust port	T

T 7 4 ★ - ★ ★ A - P 1 ★

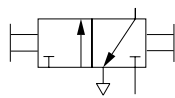
Options	Substitute
None	N
Silencer installed in T74T exhaust port	S

Threads	Substitute
PTF	A
ISO R _c taper	B
ISO G parallel	G

Port Size	Substitute
3/8"	3
1/2"	4
3/4"	6

ISO Symbols


2-Port/2-Position



3-Port/2-Position

See Section ALE-24 for Accessories



Technical Data

Fluid: Compressed air
 Maximum pressure: 250 psig (17 bar)
 Temperature range: -30° to 150°F (-34° to 65°C)
 * Air supply must be dry enough to avoid ice formation at temperatures below 35°F (2°C).
 Cv factor
 IN to OUT ports:
 3/8" ports: 7.1
 1/2" ports: 8.1
 3/4" ports: 7.7
 OUT to EXHAUST ports on 3-port/2-position valves: 0.2
 Exhaust port threads on T74T models:
 1/8 PTF with PTF main ports
 1/8" ISO R_C with ISO G and ISO R_C main ports
 Hole diameter in slide for padlock: 0.29" (7.5 mm)
 Materials
 Body: Zinc
 Slide: Acetal plastic
 Elastomers: Nitrile

Service Kits

Item	Type	Part Number
Service kit	T74B (black slide)	4384-711
	T74E (yellow slide)	4384-710
	T74T (red slide)	4384-713

Service kit includes seals and slide.

All Dimensions in Inches (mm)

