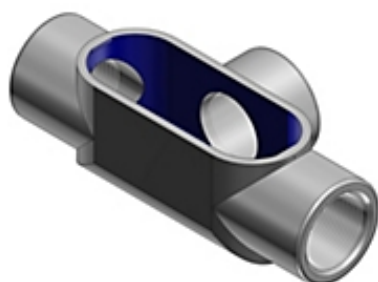




Actual



Representative

Catalog Number: T67
Product ID: 7TAD013230R0031
UPC Number: 78621093444
EAN Number: 05415022229042
Status: Active

2 Inch Form 7 (T) Conduit Body, Body Material Gray Iron with Zinc Plating and Baked on Epoxy Powder Coat with BlueKote Internal Coating for Use with Rigid/IMC Conduit

- Eliminates rough internal surfaces that can cut into cable jacket, insulation and conductors during pulling and also reduces installation time and risk of installer strain.
- Triple-layer protection...including two layers of epoxy coating which stops corrosion in its tracks.
- Bodies are designed with a flat back, allowing more cubic inch capacity.
- T&B Form 7 bodies and covers are interchangeable with Crouse-Hinds and Appleton's Form 7 bodies and covers.
- Conduit bodies make 90 degree bends in conduit runs, act as mounting outlets for wiring devices and lighting fixtures and to provide access to conductors for maintenance and future system changes.

Header

3D Model Available on Website

North American Specifications (UNSPSC)

| | |
|------------------|--|
| UNSPSC | 39131708 Electrical conduit fitting body |
| IGCC | 5563 Electrical conduit fitting body |
| Brand Name | T&B |
| Type | Form 7 Conduit Body |
| Special Features | BlueKote Teflon Based Internal Finish Provides a Slick, Easy-Glide Internal Surface Which Significantly Lowers The Amount of Force Necessary to Pull Wires. |
| Application | Conduit Bodies are Installed In Conduit Systems to Connect Sections, Act As Pull Outlets When Conductors are Being Installed and Provide Easy Access for Splices In Branch Conductors. |
| Standard | UL E2969, CSA |
| Hub Size | 2 Inch |
| Form | 7 |
| Material | Gray Iron |
| Finish | Zinc Plated with Epoxy Powder Coat |

Packaging

| | |
|---------------------------|------------------|
| Inner Quantity | 2 |
| Inner Dimensions (inches) | 12.8x4.8x3.8 |
| Outer Quantity | 10 |
| Outer Dimensions (inches) | 23.3x7x10.25 |
| Weight Uom | 600 lbs. per 100 |

Documents / Support Tools

Technical Data Sheet US Available on Website

For further technical assistance, please contact us...

Thomas & Betts - USA
 8155 T&B Blvd.
 Memphis, TN 38125
 www.tnb.com

T&B Technical Support
 MS 3B-50
 8155 T&B Blvd.
 Memphis, TN 38125

Hours: 7AM - 6PM CDT
 Monday-Friday
 Phone: (888) 862-3289
 Fax: (901) 252-1321

