

Cabstop® plastic cable glands



A unique cable entry into material from 1.5 mm to 4 mm thick
 Fast and easy to use - push in and turn to fix, no locknut
 Exceeds 15 kg pull test
 Fully insulated Elastomer seal in RAL 7016
 Polypropylene body in RAL 7001 with cable grip
 No tools required - just push in the cable
 Cable may be released and the entry sealed to IP 65 using Cat. No. 980 78/75/77

Pack Cat. Nos. **Cabstop IP 65 - IK 08**

Pack	Cat. Nos.	ISO	For cable Ø (mm)	
			Min.	Max.
20	980 81	M16	3	10
20	980 82	M20	5	14
5	980 83	M32	14	24

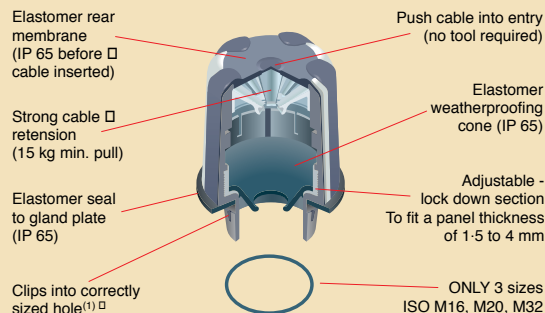
Pack of tools/caps RAL 7001

1	980 78	Caps used to blank cable entry 4 caps Ø 3 to 10 12 caps Ø 5 to 14 4 caps Ø 14 to 24
1	980 75	Cable release tool Ø 3 to 14
1	980 77	Cable release tool Ø 14 to 24

Cabstop® plastic cable glands

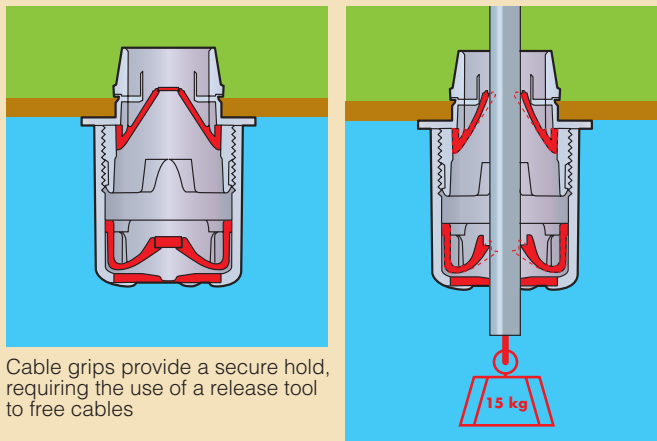
■ Technical information

- ASTM n° 3 resistance to cutting oils
- Glow wire test : 750 °C
- Tensile strength : 15 kg minimum
- Operating temperature : - 20 °C /+ 65 °C
- Patented innovative product



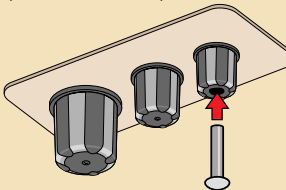
IP 65 is maintained by the elastomere rear membrane and the internal elastomere seal

Strong cable retention : 15 kg min.



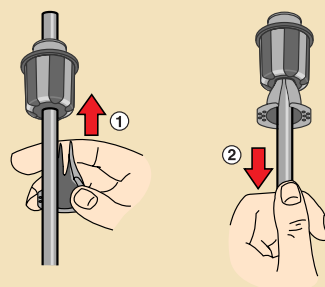
Sealing caps

Sealing caps are required to seal used unwanted entries (Cat. No. 980 78)



Cable release tool

(Cat. No. 980 75/77)



plastic cable glands IP 68 PG and ISO



Anti-vibration mechanically tightened cable gland with retractable seal for IP 68 weatherproofing
Supplied complete with o-ring joint and Hex nut mounted (RAL 7001)
Locking part consisting of flexible blades which exert strong pressure on the cable thus giving the product excellent tensile strength
Material: polyamide RAL 7001, neoprene gasket

Pack	Cat.Nos		PG	Clamping capacity (mm)	
	Grey	Black		Min.	Max.
25	980 20	979 70B	7	3	6.5
25	980 21	979 71B	9	4	8
25	980 22	979 72B	11	5	10
25	980 23	979 73B	13.5	6	12
20	980 24	979 74B	16	10	14
10	980 25	979 75B	21	12	18
5	980 26	979 76B	29	18	25
3	980 27	979 77B	36	22	32
2	980 28	979 78B	42	30	38
2	980 29	979 79B	48	34	44

Pack	Cat.Nos		ISO	Clamping capacity (mm)	
	Grey	Black		Min.	Max.
25	980 00	979 61B	12	3	6.5
25	980 01	979 61B	16	4	8
25	980 03	979 63B	20	6	12
10	980 05	979 65B	25	12	18
5	980 06	979 66B	32	18	25
3	980 07	979 67B	40	22	32
2	980 08	979 68B	50	30	38

ISO locking nuts

Hex nut RAL 9011, fitted with skirt for protecting the enclosure surface for fixing the cable glands
Polyamide 6 reinforced fiber glass
With joint polyamide RAL 7001

50	979 41	ISO 16
50	979 43	ISO 20
50	979 45	ISO 25
25	979 46	ISO 32
25	979 47	ISO 40
25	979 48	ISO 50
25	979 49	ISO 63

ISO stopping plugs

Hexagonal plug with gasket and equipped with skirt for protecting the surface of the enclosure when fitting
Tighten using Allen key, flat screwdriver

ISO		
50	980 41	16
50	980 43	20
50	980 45	25
25	980 46	32
25	980 47	40

plastic cable glands IP 55 PG and ISO



Polyamide RAL 7035, rubber gasket
Cable gland compact with clamping cap with knock-out opening
Can be blanked directly with plug

Screw-in cable glands

Pack	Cat.Nos	PG	Grip capacity	
			Min.	Max.
50	980 10	7	3	6
50	980 11	9	5	8
50	980 12	11	7	10
50	980 13	13	9	12
50	980 14	16	10	14
50	980 15	21	14	18
10	980 16	29	16	24
10	980 17	36	22	30
10	980 18	42	30	35
10	980 19	48	31	40

ISO Conform to standard EN 50262

Pack	Cat.Nos	ISO	Clamping capacity (mm)	
			Min.	Max.
50	979 31	16	6	9
50	979 33	20	9	12
50	979 34	20	11	14

Locking nuts and stopping plugs

PG

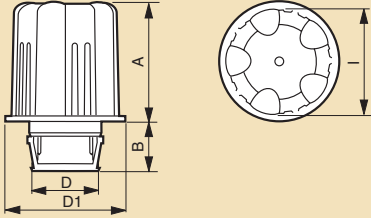
Locking nuts for fixing cable glands on thin partition in polycarbonate RAL 7035
Stopping plugs in polyethylene RAL 7035

Pack	Locking nuts	Stopping plugs	PG
50	980 31	980 62	9
50	980 32	980 63	11
50	980 33	980 64	13
50	980 34	980 65	16
50	980 35	980 66	21
10	980 36		29
10	980 37		36
10	980 38		42
10	980 39		48

cable glands

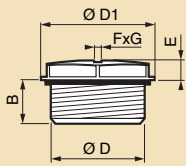
■ Cabstop ISO cable glands IP 65

- Resistance to ASTM No 3 cutting oils
- Pull-out resistance: 15 kg minimum
- Operating temperature: - 20 °C to + 65 °C
- Patented



Cat.Nos	A	B	D	D1	I	Punch-drilling Ø (mm)	Drilling hole Ø min. / max. (mm)	
980 81	32.7	14.4	16	29.4	26.4	16.2	16.1	16.7
980 82	34.9	14.4	20	35	32.2	20.4	20.1	20.7
980 83	44.5	14.4	32	52.5	48.8	32.5	32.1	32.7

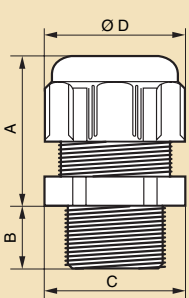
ISO stopping plugs



Cat.Nos	Threading ISO	Dimensions (mm)				
		Ø D	Ø D1	F X G	B	E
980 41	16	15.8	20.5	8 x 2	12	3.9
980 43	20	19.8	25	8 x 2	12	3.8
980 45	25	24.8	30.5	8 x 2	12	4.4
980 46	32	31.8	38	8 x 2	12	4.9
980 47	40	39.8	46.5	8 x 2	12.5	4.9

■ Plastic cable glands IP 68

Operating temperature : - 20 °C + 80 °C

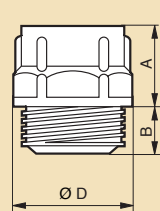


Cat.Nos	A	B	Ø D	C to flat	Threading		Drilling Ø
					Ø	Pitch	
980 20	22	10	16.8	15	12.5	1.270	12.7
980 21	26	10	21	19	15.2	1.411	15.2
980 22	27	12	24.5	22	18.6	1.411	18.6
980 23	29	12	26.5	24	20.4	1.411	20.4
980 24	30	13	29.5	27	22.5	1.411	22.5
980 25	35	15	36	33	28.3	1.587	28.3
980 26	40	15	46.5	42	37	1.587	37
980 27	49	17	58.5	53	47	1.587	47
980 28	54	17	66.5	60	54	1.587	54
980 29	54	18	75	68	60	2.309	60

ISO

Cat.Nos	A	B	Ø D	C to flat	Threading	Drilling Ø
980 01	26	10	21	19	16	1.5
980 03	29	12	26.5	24	20	1.5
980 05	35	15	36	33	25	1.5
980 06	40	15	46.5	42	32	1.5
980 07	49	17	58.5	53	40	1.5
980 08	54	17	66.5	60	50	1.5
980 09	54	18	75	68	63	1.5

■ Plastic cable glands IP 55

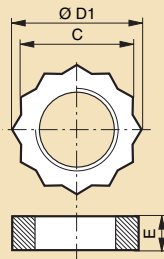


Cat.Nos	Threading PG	Body (mm)				Ø Drilling smooth hole
		Ø D to edge	D to flat	A	B	
980 10	7	16.6	15	11	6.5	12.7
980 11	9	21	19	11.5	7	15.2
980 12	11	24	22	12	8	18.6
980 13	13	26.5	24	13	9	20.4
980 14	16	29.75	27	13.5	9	22.5
980 15	21	35.25	32	16.5	10	28.3
980 16	29	45	41	18.5	12	37
980 17	36	60	55	21.5	14	47
980 18	42	65.5	60	22	16	54
980 19	48	71	65	23	16	60

ISO

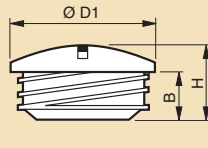
Cat.Nos	Threading ISO	Body (mm)				Ø Drilling smooth hole
		Ø D to edge	D to flat	A	B	
979 31	16	21	19	11.5	7	15.2
979 33	20	26.5	24	13	9	20.4
979 34	20	29.75	27	13.5	9	20.4

PG locking nuts



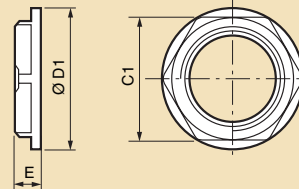
Cat.Nos	Threading PG	C to flat	E (mm)	Ø D1 (mm)
980 30	7	15	4.5	17.3
980 31	9	19	4.5	21.9
980 32	11	22	5	25.4
980 33	13	24	5.5	27.7
980 34	16	27	6	31.1
980 35	21	32	6.5	36.9
980 36	29	41	7.5	47.3
980 37	36	54	8.5	62.4
980 38	42	60	9	69.3
980 39	48	67	9.5	77.4

PG stopping plugs



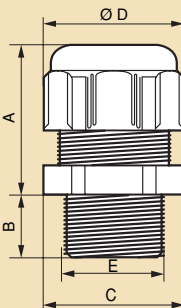
Cat.Nos	Threading PG	Ø D1 (mm)	B (mm)	H (mm)
980 61	9	19	6.5	-
980 62	11	22	6.5	10
980 63	13	25.5	6.5	10
980 64	16	27	6.5	10
980 65	21	34	8	11.5
980 66	29	44	8	12

ISO locking nuts



Cat.Nos	Threading ISO	C1 to flats	E (mm)	Ø D1 (mm)
979 41	16	22	5	24
979 43	20	26	6	28
979 45	25	32	6	35
979 46	32	42	7	43
979 47	40	50	7	56
979 48	50	60	8	66
979 49	63	75	8	81

■ P.E. RAL 9011



ISO

Cat.Nos	Threading	A	B	Ø D	C to flat	E	Ø Punch-drilling
979 61	ISO 16	26	10	21	19	15.8	16.2
979 63	ISO 20	29	12	26.5	24	19.9	20.4
979 65	ISO 25	35	15	36	33	24.8	25.4
979 66	ISO 32	40	15	46.5	42	31.6	32.5
979 67	ISO 40	49	17	58.5	53	39.8	40.5
979 68	ISO 50	54	17	66.5	60	49.8	50.8
979 69	ISO 63	54	18	75	68	62.6	64

PG

Cat.Nos	Threading	A	B	Ø D	C to flat	E	Ø Punch-drilling
979 70	PG 7	22	10	16.8	15	12.1	12.7
979 71	PG 9	26	10	21	19	15.1	15.2
979 72	PG 11	27	12	24.5	22	18.2	18.6
979 73	PG 13,5	29	12	26.5	24	20.2	20.4
979 74	PG 16	30	13	29.5	27	22.3	22.5
979 75	PG 21	35	15	36	33	28.1	28.3
979 76	PG 29	40	15	46.5	42	36.9	37
979 77	PG 36	49	17	58.5	53	46.4	47
979 78	PG 42	54	18	66.5	60	53.5	54
979 79	PG 48	54	18	75	68	59.9	60