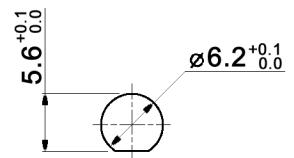


PANEL MOUNTING



CONTACT ARRANGEMENT

| code for x | function | toggle towards keyway | toggle opposite to keyway |
|------------|----------|-----------------------|---------------------------|
| D | On-On | 1-2 | 2-3 |
| F | Mom-On | | |

| code for x | function | toggle towards keyway | toggle in center | toggle opposite to keyway |
|------------|-------------|-----------------------|------------------|---------------------------|
| E | On-Off-On | 1-2 | open | 2-3 |
| G | Mom-Off-Mom | | | |
| H | Mom-Off-On | | | |

Specifications:

- Contact rating:** 3A, 250V AC / 6A, 125V AC
 4A, 30V DC / 5A, 12V DC
 6A, 6V DC
Contact resistance: 20mOhm max.
Insulation resistance: 1 000MOhm min. at 500V DC
Dielectric strength: 1 500V, 50Hz for the duration of 1 minute
Operating temperature: -45°C to +140°C
Mechanical life: min. 200 000 cycles
Soldering conditions: hand-soldering: max.: 420°C, 3sec., 60W
 auto-soldering: max.: 270°C, 5sec.
Mounting instruction: max. torque: 49Ncm
Material: Terminal: brass, C1020 silver plated
 Case: DAP
 Housing: stainless steel, CNS9265
 Bushing: copper alloy, C3604BD nickel plated
 Actuator: copper alloy, C3604BD chrome plated
Included accessories: 1 pc. nut M6x0.75, nickel plated, 9mm wrench size
 1 pc. tooth washer
 1 pc. O-ring
Sealing: IP 67



| | | | |
|---|-------|------|-------------------------|
| Tolerances: 0.00: ±0.25mm 0.0: ±0.40mm | Date | Name | <h1>MTE 106 x</h1> |
| | 11/09 | dr | |
| | | | |
| | | | |
| Dimension | 01/11 | dr | <h1>30 19 56</h1> |
| Sealing | 12/10 | dr | |
| Modifications | Date | Name | <h1>knitter-switch</h1> |
| | | | |
| | | | Page 1/1 |