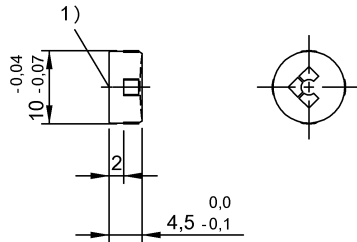


BIS M-122-02/A
BIS004A



1) Sensing surface



Electrical data

| | |
|---------------------------|-----------------------------------------------------|
| Data retention time/years | ≥ 10 at 55 °C |
| Memory capacity | 2000 Byte |
| Memory organization | 250 × 8 bytes |
| Memory size, read | 8 Byte |
| Programming cycles | 10 000 000 000 |
| Programming time | for 16 bytes: 0.060s |
| Read cycles | Unlimited |
| Read time | User ID for 8 bytes: 0.02 s for 16 bytes: 0.03 s |

Environmental conditions

| | |
|--------------------------------------|-------------|
| Ambient temperature | -25...70 °C |
| EN 60068-2-27, Continuous shock load | yes |
| EN 60068-2-27, Shock | yes |
| EN 60068-2-6, Vibration | yes |
| Protection type IEC 60529 | IP67 |
| Storage temperature | -25...85 °C |

Functional safety

| | |
|-------------------------|-------|
| Diagnostic coverage | 0.0 % |
| EN 60068-2-32 Free fall | yes |
| Functional safety | no |

Mission Time 20 a

General data

| | |
|---------------------|---------------|
| Antenna type | round |
| Approval/Conformity | CE |
| EN 55022 | Size 1, Cl. B |

Material

Housing material PA, PA 12

Mechanical data

| | |
|--------------------|-------------------------------|
| Application weight | 1.50 g |
| Dimension | Ø 10 x 4.5 mm |
| Installation | for flush mounting (in steel) |

Remarks

Time specification includes data check.
For installation requirements see corresponding read/write head.
Only when used together with the appropriate read/write head.
Values are under rated conditions unless otherwise specified.
Impact loading not permitted.