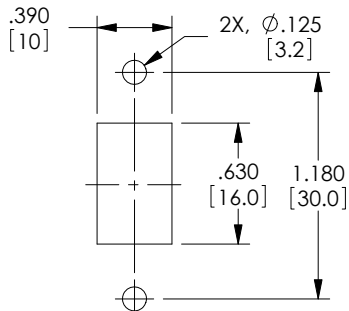
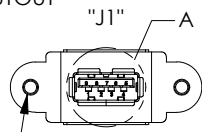


THE INFORMATION CONTAINED IN THIS DRAWING IS THE SOLE PROPERTY OF L-COM, INC. ANY REPRODUCTION IN PART OR WHOLE WITHOUT THE WRITTEN PERMISSION OF L-COM, INC. IS PROHIBITED.

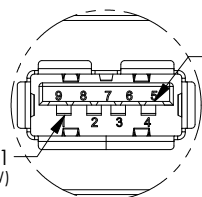
REVISIONS			
REV	DESCRIPTION	DATE	APPROVED
A	INITIAL RELEASE	2/8/12	D.GRIFFIN
B	ECN5976: CORRECTED JACK ORIENTATION	02/15/12	DFP
C	ECN 7494: CLARIFIED WIRE MAP, UPD ROHS, FORMAT, DWG LAYOUT	7/25/14	D. DESJARDIN



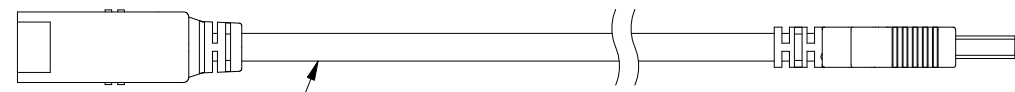
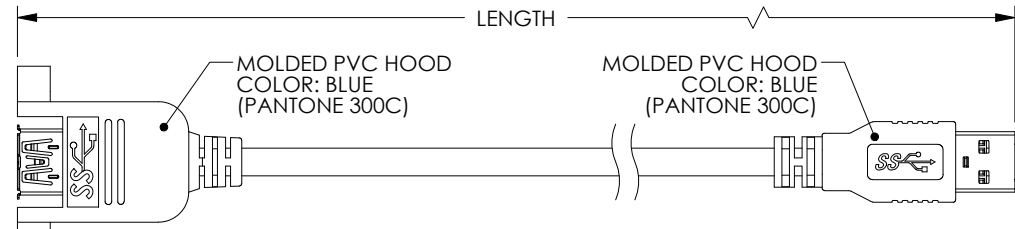
RECOMMENDED PANEL CUTOUT



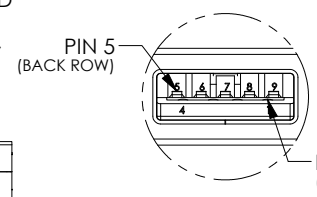
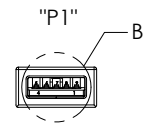
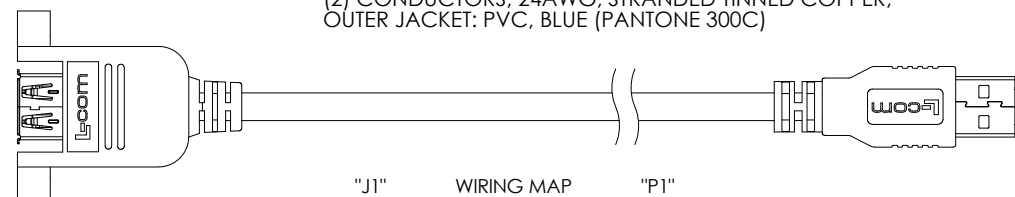
2X, 4-40 UNC-2B
THREADED INSERT
(EMBEDDED)
PEM "STKB-440-4"
OR EQUIVALENT



DETAIL A



UL 20276,
(2) SHIELDED TWISTED PAIRS, 30AWG WITH ALUMINUM MYLAR SHIELD
STRANDED TINNED COPPER AND DRAIN WIRE,
(1) UNSHIELDED TWISTED PAIR, 30AWG, STRANDED TINNED COPPER,
(2) CONDUCTORS, 24AWG, STRANDED TINNED COPPER,
OUTER JACKET: PVC, BLUE (PANTONE 300C)



DETAIL B

NOTES:

MATERIAL:
SERIES "A" JACK:
PANEL MOUNT HOUSING: PVC
CONNECTOR PLASTIC: (BLUE) PBT WITH GLASS FIBER
CONNECTOR CONTACTS: BRASS
CONNECTOR SHELL: SUS

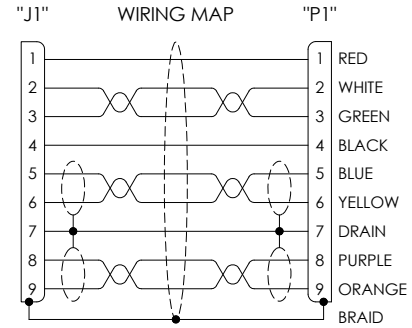
SERIES "A" PLUG:
CONNECTOR SHELL: SPCC
CONNECTOR PLASTIC: (BLUE) PBT WITH GLASS FIBER, UL94V-0
CONNECTOR CONTACTS: PHOSPHOR BRONZE

FINISH:
CONNECTOR CONTACTS: GOLD, 30μINCHES
CONNECTOR SHELL: NICKEL

ENVIRONMENTAL:
OPERATING TEMPERATURE: -20 °C TO +80 °C

MISCELLANEOUS:
CABLE ASSEMBLY SHALL BE TESTED FOR CONTINUITY.
CABLE ASSEMBLY SHALL BE INDIVIDUALLY PACKAGED IN
ACCORDANCE WITH L-COM SPEC. PS-0031

REGULATORY COMPLIANCE:
CE2011/65/EU (RoHS DIRECTIVE)



PART NUMBER	LENGTH METERS [FEET]
UPMAA-30-03M	0.3 [0.98]
UPMAA-30-05M	0.5 [1.64]
UPMAA-30-1M	1.0 [3.28]
UPMAA-30-2M	2.0 [6.56]
UPMAA-30-3M	3.0 [9.84]

UNLESS OTHERWISE SPECIFIED, DIMENSIONS ARE IN INCHES [mm] OVERALL CABLE LENGTH TOLERANCE: ≤12 [305] = +1 [25] / -0 >12 [305] ≤60 [1524] = +2 [51] / -0 >60 [1524] ≤120 [3048] = +4 [102] / -0 >120 [3048] ≤300 [7620] = +6 [152] / -0 >300 [7620] = +5% / -0% ALL OTHER DIMENSIONAL TOLERANCES: .X = ±.2 [5.08] .XX = ±.02 [1.51] .XXX = ±.005 [1.13]	APPROVALS DRAWN BY D. PARHAM CHECKED BY D. CASTRO APPROVED BY S. SMITH	DATE 09/22/2011 09/22/2011 09/27/2011	 45 BEECHWOOD DRIVE NORTH ANDOVER, MA 01845	
	CONFIGURATION DETAILS OF UNDIMENSIONED FEATURES MAY VARY COLOR VARIATIONS MAY OCCUR	CATEGORY USB PRODUCT DESCRIPTION CA USB 3.0 A PNL/AM		
PROJECTION 	SIZE A	FSCM NO. 43321	DWG. NO. UPMAA-30	REV. C
SCALE: NONE		CAD FILE: UPMAA-30.SLDRW		SHEET 1 OF 1