

SPA | 2017
Web

Bathed in Brilliance

 **SloanLED**[®]
Leaders in LED Technology

Spectacular lighting for a sensational experience.

SloanLED offers full-featured, color-changing LED lighting systems, designed for easy installation, operation, and service, for the complete spectrum of today's pools and spas.

Interior Lighting



Founded in 1957 to design and develop high-reliability lighting products, SloanLED quickly became a pioneer in LED technology. Our founder, Charles Sloan, was driven by two simple principles: employ the latest

technologies to develop quality lighting products, and take excellent care of our customers. Today, more than 60 years later, SloanLED continues to deliver on those principles.

Controllers




Exterior Lighting



Landscaping & Accent Lighting



A man is seen from the side, relaxing in a hot tub. The hot tub is illuminated with a vibrant blue light, creating a serene and relaxing atmosphere. The water is bubbling, and the man's hands are resting on the edge of the tub. The background is dark, suggesting an indoor or nighttime setting.


Our line of LiquaLED interior lighting solutions add drama and elegance to pools and spas, along with the confidence that our products are engineered to provide the long lifespan, reliability, and ease of use you've come to expect from SloanLED.

Interior Lighting

INTERIOR LIGHTING

- UltraBRITE Mini Standard Cluster Lamp
- UltraBRITE Integrated Controller LED Cluster Lamp
- Cluster Main Lights





SloanLED offers the full spectrum of possibilities with high-caliber, moisture resistant controllers that deliver color and brightness control, creating a soothing, satisfying experience for the senses.

Controllers

CONTROLLERS

- LiquaLED Multi-Zone Controller
- LiquaLED Controller Control 40
- LiquaLED Controller Control 20



Accent lighting from SloanLED, uses advanced technology to showcase and enhance pools and spas, such as water features, baja shelves, and steps, in an exhilarating way that paints a brilliant landscape of relaxation.

Exterior Lighting

EXTERIOR LIGHTING

- LiquaLED Bullet Lights
- Skirt Lighting System
- Perimeter Lighting System



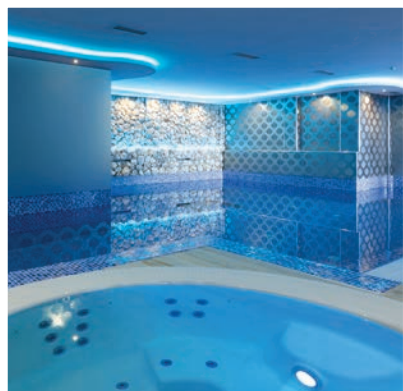
Landscape and accent lighting provides more than illumination and a sense of safety, when properly used, it crafts outdoor areas into living works of art.

Landscape & Accent Lighting

A photograph of a tropical resort pool at night. The pool is in the foreground, reflecting the lights. Several palm trees are scattered throughout the scene. Some palm trees are illuminated from below with warm, yellow light, while others are lit with a vibrant purple light. In the background, there are lounge chairs and a building. The sky is a deep blue, suggesting dusk or dawn.

LANDSCAPE & ACCENT

- Standard and low-profile linear outdoor lighting
- Border tubing and accent
- Outdoor and indoor area lighting



UltraBRITE Mini Standard Cluster Lamp

| | |
|----------------------|------------------------------------|
| Part number | 701861-9-P |
| LEDs per cluster | Nine – 5 mm LEDs |
| Input voltage | 12 VAC |
| Typical max. current | 200 mA |
| Fits lens sizes | ~2 to 5" (50 mm to 125 mm) approx. |

- Fully integrated solution – no separate controller required
- Color changing LEDs for transition and sequencing effects
- Bi-pin (-P) for incandescent replacement/retrofitting standard bulb sockets
- Reliable moisture-resistant electronic coatings

UltraBRITE Integrated Controller LED Cluster Lamp

| | |
|----------------------|-------------------------------------|
| Part number | 701739-SAO |
| LEDs per cluster | 10 |
| Input voltage | 12 VAC |
| Typical max. current | 240 mA |
| Fits lens sizes | ~2" to 5" (50 mm to 125 mm) approx. |

- Fully integrated solution – no separate controller required
- Color changing LEDs for transition and sequencing effects
- Compatible with all current LiqueLED lighting products
- Reliable moisture-resistant electronic coatings

Cluster Main Lights

| Part number | Description | Input voltage | LEDs per cluster | Typical max. current | Fits lens sizes |
|-----------------|----------------|---------------|------------------|----------------------|-------------------------|
| 701570-21-DLSO | 21-LED Cluster | 12 VAC | 21 | 240 mA | ~5" (125 mm) |
| 701570-14-DLSO | 14-LED Cluster | | 14 | 160 mA | ~3 to 5" (75 to 125 mm) |
| 701570-7-DLSO-S | 7-LED Cluster | | 7 | 80 mA | ~2 to 5" (50 to 125 mm) |

- Color changing LEDs for transition and sequencing effects
- Compatible with all current LiqueLED lighting products
- Daisy chain wiring for fast, flexible configuration and installation
- Reliable moisture-resistant electronic coatings

Colors and transition effects



LiquaLED Control 20

| | |
|-----------------------------|---------------------------------|
| Part number | 701931-DLO |
| Max. points of light | 20 |
| Required input voltage (AC) | 12 VAC from Spa Pack |
| Required input voltage (DC) | No external DC supply required |
| Typical max. output | 1 A / 12 W |
| On/Off control | Top-side Spa Pack control panel |

- Compatible with all current LiquaLED lighting products
- No external power supply required
- Reliable moisture-resistant electronic coatings
- Start-up behavior retains settings from previous use

LiquaLED Multi-Zone Controller

| | |
|------------------------------------|---------------------------------|
| Part number | 701898-DLO |
| Max. points of light | >100 |
| Required input voltage (AC) | 12 VAC from Spa Pack |
| Required input voltage (DC) | Optional 12 VDC input (3A max.) |
| Number of individual color "shows" | Up to 7 (programmable) |
| Lighting zones | Up to four (4) |

LiquaLED Control 40

| | |
|-----------------------------|---------------------------------|
| Part number | 701678-DLO |
| Max. points of light | 40, plus one cluster light |
| Required input voltage (AC) | 12 VAC from Spa Pack |
| Required input voltage (DC) | No external DC supply required |
| Typical max. output | 1 A / 12 W |
| On/Off control | Top-side Spa Pack control panel |

- Compatible with all current LiquaLED lighting products
- No external power supply required
- Reliable moisture-resistant electronic coatings
- Start-up behavior retains settings from previous use

- Independent control of up to 4 regions (zones) within spa
- Compatible with all current LiquaLED lighting products
- Easy to mount anywhere in spa equipment area
- Reliable moisture-resistant electronic coatings

LiquaLED Bullet Lights

| Description | LEDs per cable | Typical max. current per cable | Connector wire length | Outer/inner bullet light wire length |
|---|----------------|--------------------------------|-----------------------|--------------------------------------|
| Single-LED Cable 701564-1-DLO | 1 | 50 mA | 50" (1270 mm) | 25" / 25" (635 mm / 635 mm) |
| Dual-LED Cable 701564-2-DLO | 2 | 40 mA | | 25" / 17" (635 mm / 432 mm) |
| Quad-LED Cable 701564-4-DLO | 4 | 80 mA | 48" (1219 mm) | 52" / 48" (1321 mm / 1219 mm) |
| Hexa-LED Cable 701564-6-DLO | 6 | | | 36" / 24" (914 mm / 610 mm) |
| Extended length Quad-LED Cable Connector & Bullet Wire 701564-4-DLO-XL | 4 | | | 76" (1930 mm) |
| Extended length Quad-LED Cable Connector Wire 701564-4-DLO-38 | | | | 24" / 16" (610 mm / 406 mm) |

- Color changing LEDs for transition and sequencing effects
- Daisy chain wiring for fast, flexible configuration and installation
- Reliable moisture-resistant electronic coatings
- Several accessory lens types available

Skirt Lighting

| | |
|----------------------|---|
| Part number | 701787 |
| Number of modules | 1 each |
| Typical max. current | 60 mA each |
| Cable length | 36" (915 mm) cable (connector-to-connector) |

- Color changing LEDs for transition and sequencing effects
- Durable housing with integrated threaded shaft
- Low profile design eliminates damaging during crating, shipping, and use

Perimeter Lighting

| | |
|----------------------|--|
| Part number | 701755-M4-18-DLO |
| Number of modules | 4 per string |
| Typical max. current | 280 mA per string |
| Cable length | 7.5" (191 mm) total cable (connector-to-connector) |

- Color changing LEDs for transition and sequencing effects
- Peel-n-stick or mechanical mounting of modules
- Available in a 7.5" (191 mm) string with four modules, spaced on 18" (457 mm) centers

Bullet Light Lenses

| Description | Standard Lens | Wide Flange Lens | Wide Flange Faceted Lens |
|---|--|------------------|--------------------------|
| Flange diameter | 0.530" (13.5 mm) | 0.600" (15.2 mm) | 0.580" (14.7 mm) |
| Mounting method | Nut on threaded and/or press fit using ribs on shaft | | |
| Drill size | W Drill (0.386" / 9.8 mm) | | |
| Length (bottom of flange to end of threads) | 1.127" (28.6 mm) | | |
| Length (non-threaded ribbed section) | 0.284" (7.21 mm) | 0.125" (3.18 mm) | |
| | Part numbers | | |
| Lens | 400372 | 400372-W | 400372-WF |
| Nut | 400338 | | |
| Standard (0.070" / 17.8 mm) O-ring only | 400417 | | |
| Thicker (0.103" / 2.6 mm) O-ring only | N/A | 400510 | |

- Easy to install
- Three styles to choose from
- Proven reliability, rugged molded acrylic

Jumper Cables

| Part number | Length |
|-------------|------------|
| 410117-24-0 | 2' (0.6 m) |
| 410117-60-0 | 5' (1.5 m) |

- Can be used anywhere in the LigualLED system, including between Cluster Lights, Bullet Lights, and Perimeter Lights
- Reliable moisture-resistant electronic coatings

Miscellaneous Accessories

| Part number | Description |
|-------------|---|
| 400354 | 1.6 A, 250 V Fuse (for use with 701678-DLO) |
| 701819 | 120 VAC to 12 VAC, 1 A wall mount power supply (for trade shows/demo use) |
| 701786 | LigualLED tester |
| 400524 | LigualLED tester instructions |

Visit SloanLED.com for our complete line of lighting solutions for pools and spas, hotels, and everything in between.



Trade names, marks and logos shown are the property of their respective owners. Specifications may change without notice.

SloanLED Headquarters SloanLED Europe
888.747.4LED +31 88 12 44 900

SloanLED.com

© 2017 SloanLED PN#402186 Rev A Web 2017-08-10

