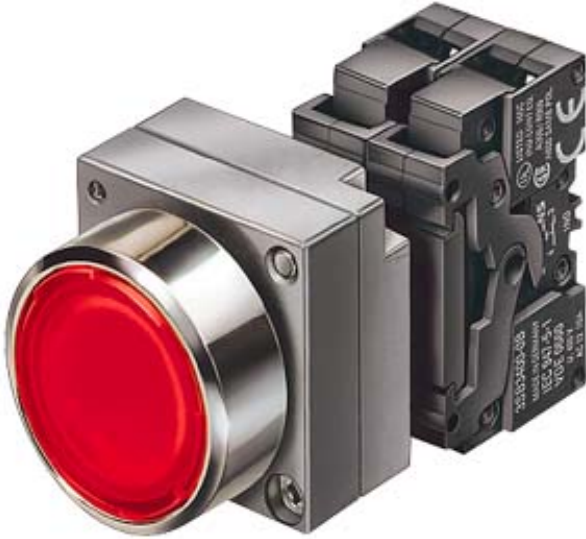


22MM METAL ROUND COMPLETE UNIT COMBINATION:  
ILLUMINATED PUSHBUTTON MOMENTARY CONTACT  
TYPE WITH FLAT BUTTON ILLUMINATED WITH  
INTEGRATED LED 24V AC/DC SCREW TERMINAL,  
1NO WITH HOLDER WHITE



Enclosure:	
Material / of the enclosure	metal
Form / of the enclosure front	round
Actuator / signaling device:	
Design of the product	Complete unit, round
Design of the operating mechanism	Illuminated pushbutton
Type of unlocking device	without
Material / of the activation element	plastic
Shape / of the activation element	Flat pushbutton
Number of switching positions	2
Product component / front ring	Yes
Material / of the front ring	metal
Color / of the front ring	silver
Design of the front ring	Standard
Holder:	
Material / of the holder	Metal
Contact block / lampholder	
Design of the electrical connection	screw-type terminals

<b>Number of switching elements</b>		1
<b>Number of NC contacts / for auxiliary contacts</b>		0
<b>Number of NO contacts / for auxiliary contacts</b>		1
<b>Number of change-over switches / for auxiliary contacts</b>		0
<b>Product function / positive opening</b>		No
<b>Number of lampholders</b>		1
<b>Execution of the mounting</b>		integrated LED
<b>Product component / fluorescent materials</b>		Yes
<b>Product extension / optional / fluorescent materials</b>		Yes

#### Accessories:

<b>Product component / holder for 3 switching elements</b>		Yes
--	--	-----

#### General technical details:

<b>Type of voltage / of the supply voltage / of the fluorescent material</b>		AC/DC
<b>Supply voltage / 1 / of the fluorescent material</b>		
• at 60 Hz / for AC / rated value	V	24
• at 50 Hz / for AC / rated value	V	24
• for DC / rated value	V	24
<b>Type of voltage / of the operating voltage</b>		AC/DC
<b>Operating voltage</b>		
• rated value	V	21.6 ... 26.4
<b>Operating current</b>		
• at AC-12		
• at 24 V / rated value	A	10
• at 48 V / rated value	A	10
• at 110 V / rated value	A	10
• at 230 V / rated value	A	10
• at 400 V / rated value	A	10
• at AC-15		
• at 24 V / rated value	A	6
• at 48 V / rated value	A	6
• at 110 V / rated value	A	6
• at 230 V / rated value	A	6
• at 400 V / rated value	A	3
• at DC-12		
• at 24 V / rated value	A	10
• at 48 V / rated value	A	5
• at 110 V / rated value	A	2.5
• at 230 V / rated value	A	1

<ul style="list-style-type: none"> <li>• at DC-13 <ul style="list-style-type: none"> <li>• at 24 V / rated value</li> <li>• at 48 V / rated value</li> <li>• at 110 V / rated value</li> <li>• at 230 V / rated value</li> </ul> </li> <li>• for devices without incandescent lamp / according to IEC 60068-2-27</li> </ul>	A	3
	A	1.5
	A	0.7
	A	0.3
		<= 50g
<b>Resistance against vibration / according to IEC 60068-2-6</b>		20 ... 200 Hz: 5g
<b>Operating cycles / maximum</b>	1/h	1,000
<b>Mechanical operating cycles as operating time / typical</b>		3,000,000
<b>Item designation</b> <ul style="list-style-type: none"> <li>• according to DIN EN 61346-2</li> <li>• according to DIN 40719 extendable after IEC 204-2 / according to IEC 750</li> </ul>		S S
<b>Tightening torque / of the screws in the bracket / maximum</b> <ul style="list-style-type: none"> <li>• during operating</li> <li>• during storage</li> </ul>	N-m °C °C	1 -25 ... +70 -40 ... +80
<b>Protection class IP</b>		IP67
<b>climatic class / during the operating phase / according to EN 60721</b>		3K6
<b>Type of mounting</b>		front mounting
<b>Shape / of the installation hole</b>		round
<b>Installation width</b>	mm	28.5
<b>Mounting diameter</b>	mm	22
<b>Mounting height</b>	mm	12
<b>Mounting depth</b>	mm	49

#### Certificates/approvals:

##### General Product Approval



CCC



CSA



GOST



UL

##### Test Certificates

[Special Test Certificate](#)

##### Shipping Approval



ABS



DNV



LRS



PRS



RINA

##### other

[Confirmation](#)

[other](#)

[Environmental Confirmations](#)

#### Further information:

---

**Information- and Downloadcenter (Catalogs, Brochures,...)**

<http://www.siemens.com/industrial-controls/catalogs>

---

**Industry Mall (Online ordering system)**

<http://www.siemens.com/industrial-controls/mall>

---

**Cax online generator:**

<http://www.siemens.com/cax>

---

**Service&Support (Manuals, Certificates, Characteristics, FAQs,...)**

<http://support.automation.siemens.com/WW/view/en/3SB3645-0AA61/all>

---

**Image database (product images, 2D dimension drawings, 3D models, device circuit diagrams, ...)**

[http://www.automation.siemens.com/bilddb/cax\\_en.aspx?mlfb=3SB3645-0AA61](http://www.automation.siemens.com/bilddb/cax_en.aspx?mlfb=3SB3645-0AA61)

---

**last change:**

Jan 21, 2013