



VOLTAGE RELEASE, AC 20...24V, 50/60HZ,
100% ED, AC 20...70V, 50/60HZ, 5SEC ED,
DC 20...70V, 5SEC ED,
W. SCREW CONNECTION;
FOR CIRCUIT-BREAKERS, SZ S00/S0

| General technical data: | | |
|--|----|-----------------------|
| product brand name | | SIRIUS |
| product designation | | shunt release |
| Size of the circuit-breaker | | S00, S0 |
| Acceptability for application | | motor circuit breaker |
| Protection class IP / on the front | | IP20 |
| Design of the short-circuit protection | | fuse |
| Degree of pollution | | 3 |
| Insulation voltage / rated value | V | 690 |
| Insulation voltage / with degree of pollution 3 / rated value | V | 690 |
| Ambient temperature | | |
| • during storage | °C | -50 ... +80 |
| • during operating | °C | -20 ... +60 |
| Item designation | | |
| • according to DIN 40719 extendable after IEC 204-2 / according to IEC 750 | | F |
| • according to DIN EN 61346-2 | | F |
| Auxiliary circuit: | | |
| Number of NC contacts / for auxiliary contacts | | |
| • instantaneous switching | | 0 |

| | | |
|---|--|---|
| Number of NO contacts / for auxiliary contacts • instantaneous switching | | 0 |
| Number of NO contacts / for auxiliary contacts • leading switching | | 0 |
| Number of changeover contacts / of the auxiliary contacts • instantaneous switching | | 0 |

Control circuit:

| | | |
|---|------------------|----------------------|
| Type of voltage / of the controlled supply voltage | | AC |
| Control supply voltage frequency • 1 / initial rated value • 1 / final rated value | Hz Hz | 50 60 |
| Control supply voltage • 1 / at 50 Hz / for AC / initial rated value • 1 / at 50 Hz / for AC / final rated value • 1 / at 60 Hz / for AC / final rated value • 1 / at 60 Hz / for AC / initial rated value | V V V V | 20 24 24 20 |

Installation/mounting/dimensions:

| | | |
|-------------------------|----|------------------|
| Type of mounting | | snap-on mounting |
| Width | mm | 18.5 |
| Height | mm | 90 |
| Depth | mm | 68 |

Certificates/approvals:

| | | |
|------------------------------------|--|---------------|
| Verification of suitability | | CE / UL / CSA |
|------------------------------------|--|---------------|

General Product Approval



EG-Konf.

Test Certificates

[Special Test Certificate](#)

[Type Test Certificates/Test Report](#)

Shipping Approval



ABS



BUREAU VERITAS



GL



LRS



PRS



RINA

Shipping Approval

other



RMRS



VDE

[other](#)

Further information:

Information- and Downloadcenter (Catalogs, Brochures,...)

<http://www.siemens.com/industrial-controls/catalogs>

Industry Mall (Online ordering system)

<http://www.siemens.com/industrial-controls/mall>

CAX-Online-Generator

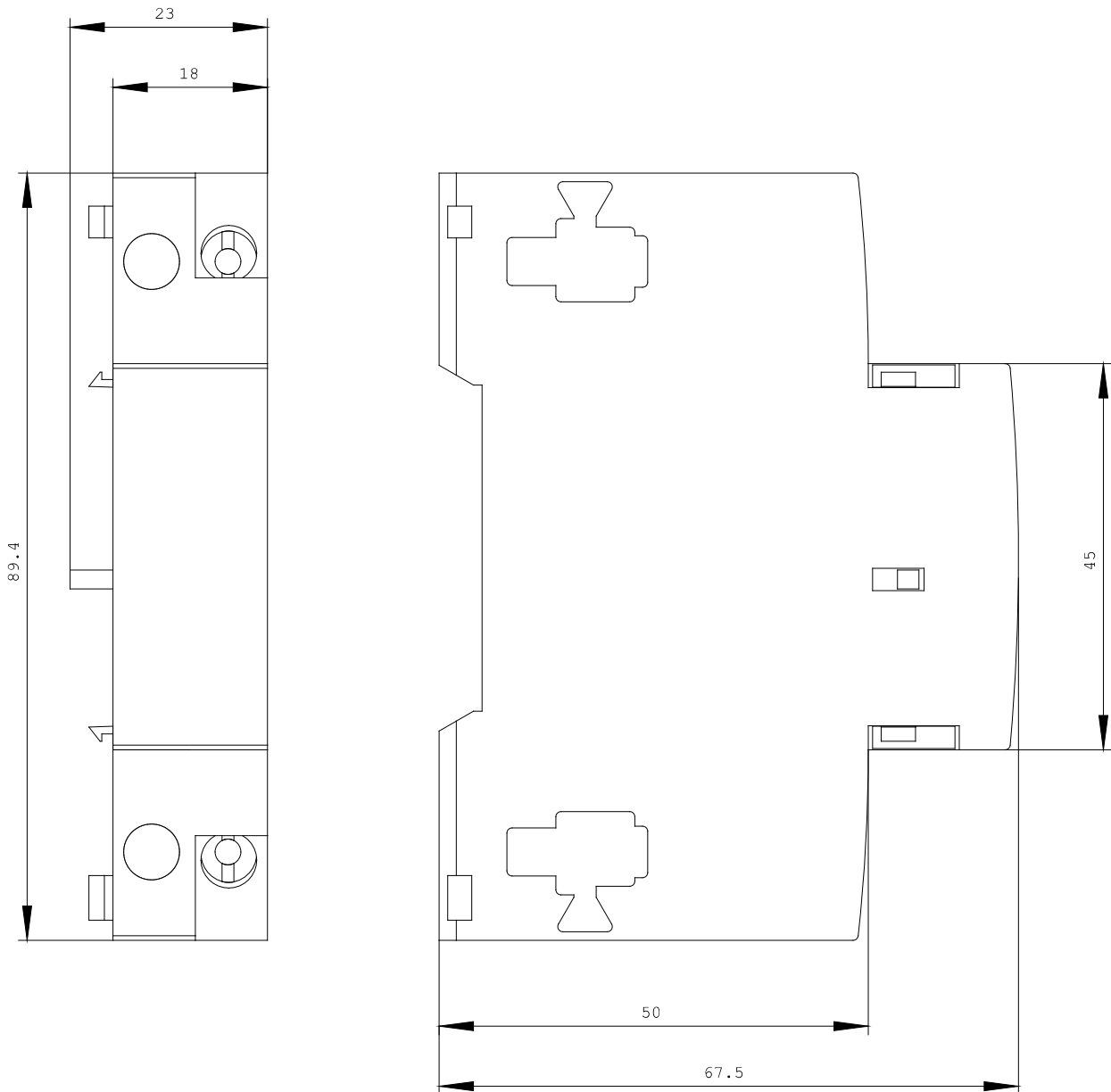
<http://www.siemens.com/cax>

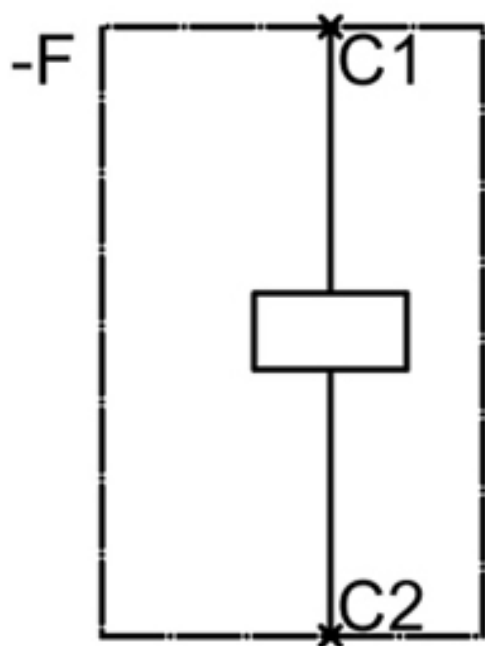
Service&Support (Manuals, Certificates, Characteristics, FAQs,...)

<http://support.automation.siemens.com/WW/view/en/3RV2902-1DB0/all>

Image database (product images, 2D dimension drawings, 3D models, device circuit diagrams, ...)

http://www.automation.siemens.com/bilddb/cax_en.aspx?mlfb=3RV2902-1DB0





last change:

Dec 17, 2012