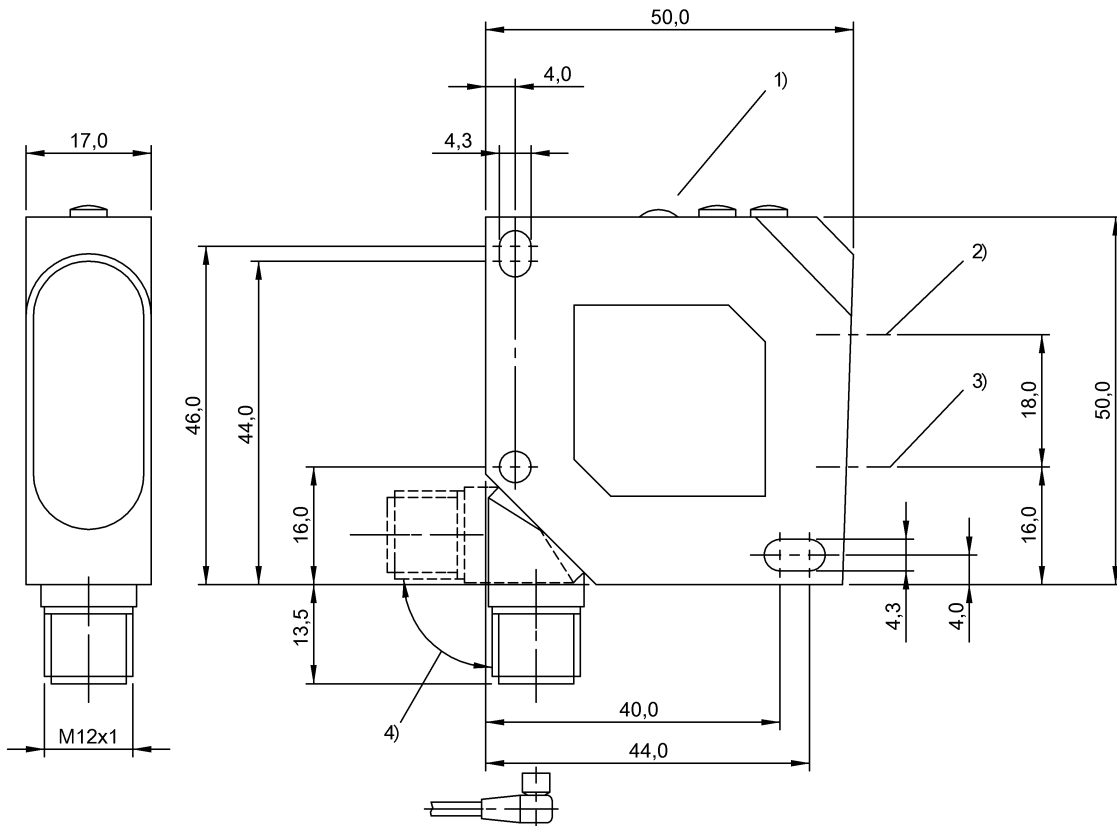


BOS 26K-PA-1HC-S4-C BOS0089



1) Display and control panel 2) Optical axis receiver 3) Optical axis emitter 4) rotatable 270°



Display/Operation

Adjuster	Potentiometer 2-turn (1x)
Setting	Rated switching distance (Sn)

Electrical connection

Connection	M12x1-Connector, 4-pole, A-coded
Polarity reversal protected	yes
Short-circuit protection	yes

Electrical data

Hysteresis H max. (% of Sr)	5.0 %
Load capacitance max. at Ue	1 µF
MTTF (40 °C)	193 a
No-load current I _o max. at Ue	35 mA
Operating voltage U _b	10...30 VDC
Rated insulation voltage U _i	75 V DC
Rated operating current I _e DC	200 mA
Rated operating voltage U _e DC	24 V
Switching frequency	1000 Hz
Turn-off delay t _{off} max.	0.5 ms

Turn-on delay t _{on} max.	0.5 ms
Utilization category	DC -13
Voltage drop U _d max. at I _e	2.4 V

Environmental conditions

Ambient temperature	-20...60 °C
Protection class	II
Protection type IEC 60529	IP67

Functional safety

Diagnostic coverage	0 %
Functional safety	no
Mission Time	10 a

General data

Approval/Conformity	cULus CE
Basic standard	IEC 60947-5-2
Series	26K
Style	Square Connection can be rotated

BOS 26K-PA-1HC-S4-C BOS0089

Material

Housing material	ABS
Material sensing surface	PMMA

Mechanical data

Dimension	17 x 50 x 50 mm
Fastening detail	Screw M4

Optical data

Ambient light max.	5000 Lux
Light type	LED Red light
Special optical feature	Background suppression
Wave length	660 nm

Output/Interface

Switching output	PNP Normally closed (NC) PNP Normally open (NO)
------------------	--

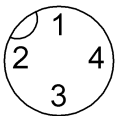
Range/Distance

Distance deviation 18 % max. (% of Sr)	8 % on 90 % rem.
Measuring range	30...300 mm
Range	30...300 mm
Rated operating distance S_n	300 mm
Ripple max. (% of U_e)	10 %

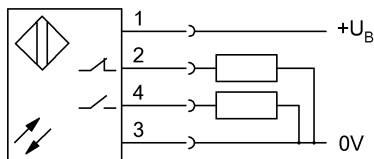
Remarks

Order accessories separately.
For additional information, refer to user's guide.
The sensor is functional again after the overload has been eliminated.
Reference object (target): gray card, 200 x 200, 90 % remission, axial approach.
Only for applications per NFPA 79 (machines with a supply voltage of maximum 600 V). Use an R/C (CYJV2) cable with suitable properties for attaching the device.
For further information on MTTF/B10d, please refer to the MTTF / B10d Certificate.
Specification of the MTTF value and the B10d value do not represent any binding quality and/or life expectancy guarantees.

Connector view

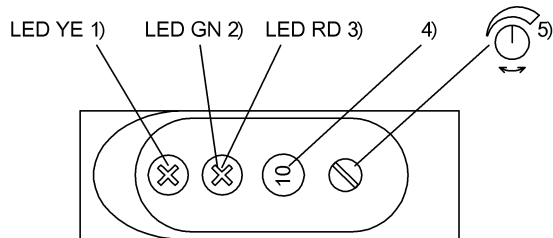


Wiring Diagram



BOS 26K-PA-1HC-S4-C
BOS0089

Additional View



1) Output function 2) Stability 3) Error 4) Switching dist. dig. displ. 5) Sensitivity

Symbols for Optoelectronic Sensors

