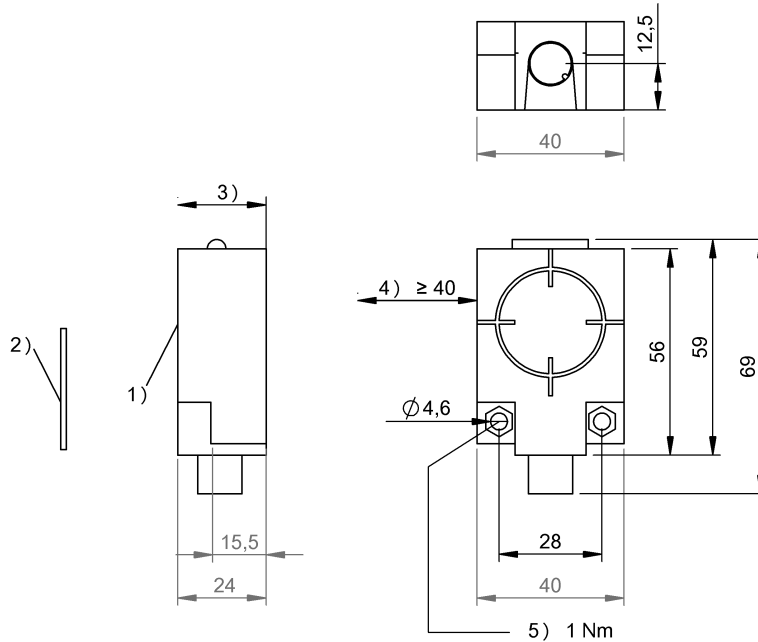


BIS M-410-068-001-00-S115  
BIS00W2



1) Sensing surface 2) Data carrier 3) Clear zone 4) Clear zone surrounding 5) Tightening torque



## Display/Operation

Function indicator	COM field, LED yellow RF field, LED red Power (ON), LED green
--------------------	---

## Electrical connection

Connection	M12x1-Connector, 8-pole
------------	-------------------------

## Electrical data

Current consumption max. at 24 V DC	150 mA
EN 300330-1	Power Class 5
Operating voltage $U_b$	10...30 VDC

## Environmental conditions

Ambient temperature	-20...50 °C
EN 60068-2-27, Continuous shock load	yes
EN 60068-2-27, Shock	yes
EN 60068-2-6, Vibration	yes
Protection type IEC 60529	IP67
Storage temperature	-20...70 °C

## Functional safety

EN 60068-2-32 Free fall	yes
-------------------------	-----

## General data

Antenna type	round
Approval/Conformity	CE UL-FILE E227256, Vol.X1, BIS EN 55011
	Size 1, Cl. A

## Material

Housing material	PC, With PU potting
------------------	---------------------

## Mechanical data

Application weight	66.00 g
Dimension	40 x 24 x 56 mm
Installation	with clear zone (in steel)

## Output/Interface

Interface	RS232
-----------	-------

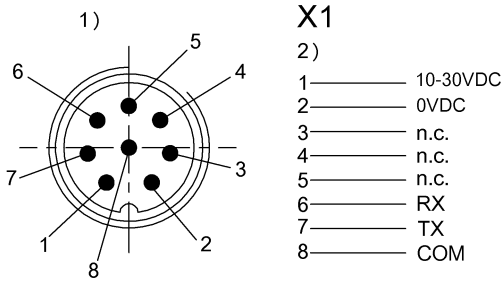
BIS M-410-068-001-00-S115  
BIS00W2

Residual ripple max.

included

Range/Distance

## Connector view

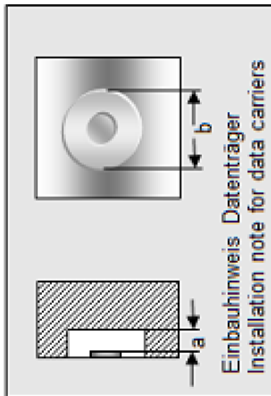


## Additional View

BIS M-410-068-001-00-S115  
BIS00W2

## BIS M-410-\_\_

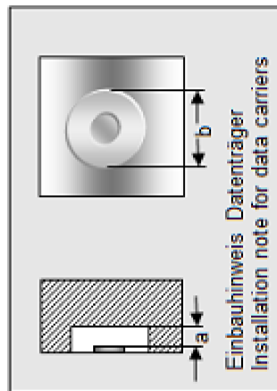
	BIS M-130-03/L	BIS M-130-07/L	BIS M-131-10/L	BIS M-132-03/L	BIS M-132-03/L- HT
passende Datenträger Appropriate data carriers					
Abstand Datenträger zu Metall in mm ( <b>a</b> ) Data carrier distance to metal in mm	>10	>10	>10	>25	>25
Freizone Datenträger in mm ( <b>b</b> ) Data carrier clear zone in mm	>60	>60	>60	>100	>100
Schreibabstand in mm Write distance in mm	0-17	0-12	0-5	0-48	0-40
Leseabstand in mm Read distance in mm	0-17	0-12	0-5	0-48	0-40
Versatz in mm bei Abstand von Offset in mm at distance	0 ±15 2 ±15 4 ±15 5 ±15 10 ±14 12 ±12 15 ±12 17 ±7 20 25 30 35 40 45 48	±12 ±12 ±12 ±12 ±10 ±5	±10 ±10 ±7.5 ±5	±30 ±30 ±30 ±30 ±30 ±25 ±25 ±25 ±25 ±20 ±20 ±20 ±20 ±20 ±12 ±12	±25 ±25 ±25 ±25 ±25 ±20 ±20 ±20 ±20 ±12 ±12
	75				
	80				
	85				
	90				
	95				
	100				



BIS M-410-068-001-00-S115  
BIS00W2

## BIS M-410-\_\_

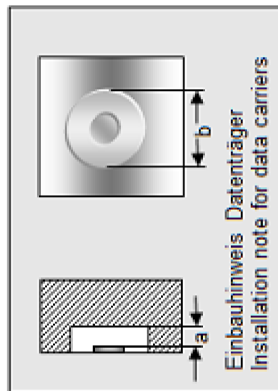
	BIS M-132-10/L	BIS M-132-10/L- HT	BIS M-133-02/A	BIS M-134-10/L	BIS M-134-10/L- HT
passende Datenträger Appropriate data carriers					
Abstand Datenträger zu Metall in mm ( a ) Data carrier distance to metal in mm	>25	>25	>25	>50	>50
Freizone Datenträger in mm ( b ) Data carrier clear zone in mm	>100	>100	>100	>150	>150
Schreibabstand in mm Write distance in mm	0-15	0-15	0-32	0-32	0-36
Leseabstand in mm Read distance in mm	0-15	0-15	0-32	0-32	0-36
Versatz in mm bei Abstand von	0 ±15	±15	±20	±22	±25
	5 ±15	±15	±20	±22	±25
	10 ±12	±12	±20	±22	±25
	15 ±8	±8	±16	±20	±25
	20		±16	±20	±25
	25		±10	±12	±20
	30		±10	±12	±20
	32		±8	±8	±12
	36				±12
	40				
	45				
	50				
	55				
	60				
	65				
	68				
	75				
	80				
	85				
	90				
	95				



BIS M-410-068-001-00-S115  
BIS00W2

## BIS M-410-\_\_

	BIS M-135-02/L	BIS M-135-03/L	BIS M-135-03/L- HT	BIS M-135-07/L	BIS M-135-07/L- HT
passende Datenträger Appropriate data carriers					
Abstand Datenträger zu Metall in mm ( a ) Data carrier distance to metal in mm	>50	>50	>50	>50	>50
Freizone Datenträger in mm ( b ) Data carrier clear zone in mm	>150	>150	>150	>150	>150
Schreibabstand in mm Write distance in mm	0-60	0-68	0-70	23-46	23-46
Leseabstand in mm Read distance in mm	0-60	0-68	0-70	23-46	23-46
Versatz in mm bei Abstand von	0 ±35	±40	±44		
	5 ±35	±40	±44		
	10 ±35	±40	±44		
	15 ±35	±40	±44		
	20 ±35	±40	±44		
	23 ±30	±32	±32	±24	±24
	30 ±30	±32	±32	±24	±24
	32 ±30	±32	±32	±18	±18
	35 ±30	±32	±32	±18	±18
	40 ±30	±32	±32	±18	±18
	46 ±24	±32	±32	±18	±18
	50 ±24	±32	±32	±10	±10
	55 ±16	±24	±25		
	60 ±16	±24	±25		
	65	±15	±15		
	68	±15	±15		
	70	±15	±15		
	80				
	85				
	90				
	95				



BIS M-410-068-001-00-S115  
BIS00W2

## BIS M-410-\_\_

	BIS M-108-02/L				
passende Datenträger Appropriate data carriers					
Abstand Datenträger zu Metall in mm ( a ) Data carrier distance to metal in mm	>25				
Freizone Datenträger in mm ( b ) Data carrier clear zone in mm	>120				
Schreibabstand in mm Write distance in mm	0-40				
Leseabstand in mm Read distance in mm	0-40				
Versatz in mm bei Abstand von	0 ±22				
	5 ±22				
	10 ±22				
	15 ±22				
	20 ±22				
	25 ±20				
	30 ±20				
	35 ±20				
	40 ±10				
	45				
	50				
	55				
	60				
	65				
	70				
	75				
	80				
	85				
	90				
	95				
	100				

Einbauhinweis Datenträger  
Installation note for data carriers