



## BGL 30A-001-S49 BGL0016

|           |                             |
|-----------|-----------------------------|
| Series    | A                           |
| Style     | Fork<br>Straight connection |
| Trademark | Global                      |

Wave length 636 nm

### Material

|                          |                   |
|--------------------------|-------------------|
| Housing material         | Zinc, Die casting |
| Material sensing surface | Glass             |
| Surface protection       | painted           |

### Output/Interface

|                  |   |
|------------------|---|
| Switching output | PNP Normally open/Normally closed (NO/NC) |
|------------------|---|

### Range/Distance

|                       |      |
|-----------------------|------|
| Ripple max. (% of Ue) | 10 % |
|-----------------------|------|

### Mechanical data

|                    |                 |
|--------------------|-----------------|
| Dimension          | 10 x 50 x 68 mm |
| Fastening detail   | Screw M4        |
| Fork opening       | 30 mm           |
| Smallest part typ. | 0.30 mm         |

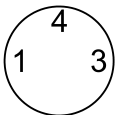
### Remarks

Order accessories separately.  
For additional information, refer to user's guide.  
Factory default setting for switching output: Normally open.  
Reference object (target): Steel plate, 50 x 50, thickness 0.5 mm, lateral approach.  
The sensor is functional again after the overload has been eliminated.  
Only for applications per NFPA 79 (machines with a supply voltage of maximum 600 V). Use an R/C (CYJV2) cable with suitable properties for attaching the device.  
For further information on MTTF/B10d, please refer to the MTTF / B10d Certificate.  
Specification of the MTTF value and the B10d value do not represent any binding quality and/or life expectancy guarantees.

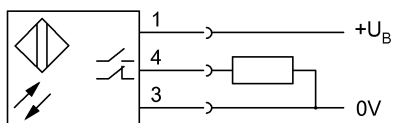
### Optical data

|                                |                     |
|--------------------------------|---------------------|
| Ambient light max.             | 5000 Lux            |
| Beam characteristic            | Divergent           |
| Light type                     | LED Red light       |
| Principle of optical operation | Through-beam sensor |

### Connector view



### Wiring Diagram



### Symbols for Optoelectronic Sensors

