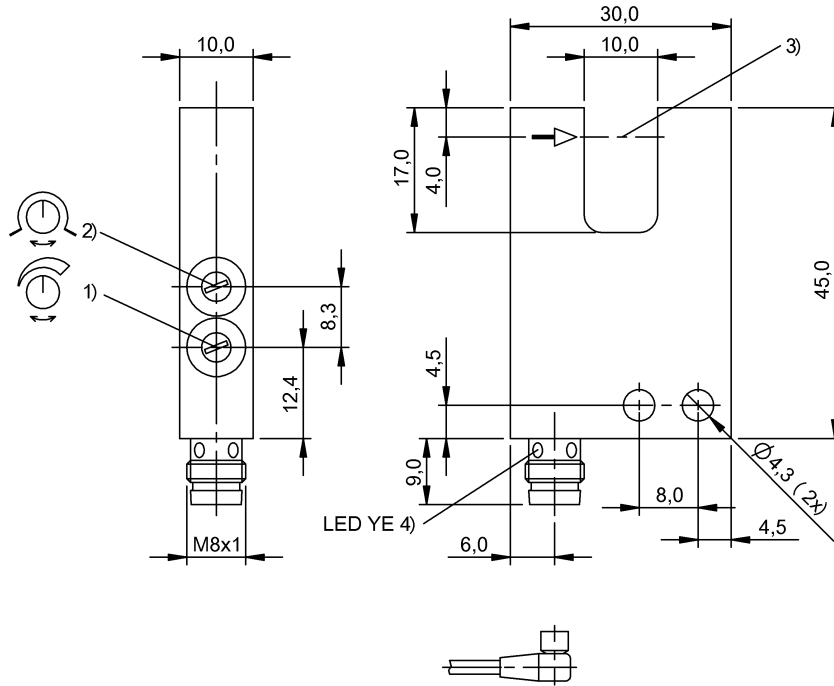


BGL 10A-005-S49
BGL0003



1) Sensitivity 2) Light-on/dark-on 3) Optical axis 4) Output function



Display/Operation

Adjuster	Potentiometer 270° (2x)
Setting	Light-on/dark-on Sensitivity

Residual current I_r max.	50 μ A
Switching frequency	5000 Hz
Turn-off delay t_{off} max.	0.1 ms
Turn-on delay t_{on} max.	0.1 ms
Utilization category	DC -13
Voltage drop U_d max. at I_e	3 V

Electrical connection

Connection	M8x1-Connector, 3-pole
Contact, surface protection	Gold plated
Polarity reversal protected	yes
Short-circuit protection	yes

Environmental conditions

Ambient temperature	-10...60 °C
Protection type IEC 60529	IP67

Electrical data

Hysteresis H max.	0.07 mm
Load capacitance max. at U_e	0.5 μ F
No-load current I_o max. at U_e	25 mA
Operating voltage U_b	10...30 VDC
Rated insulation voltage U_i	75 V DC
Rated operating current I_e DC	200 mA
Rated operating voltage U_e DC	24 V
Ready delay t_v max.	200 ms
Repeat accuracy lateral max.	20 μ m

General data

Approval/Conformity	cULus CE
Basic standard	IEC 60947-5-2
Series	A
Style	Fork Straight connection

Material

Housing material	Zinc, Die casting
Material sensing surface	Glass

BGL 10A-005-S49 BGL0003

Surface protection painted

Mechanical data

Dimension	10 x 30 x 54 mm
Fastening detail	Screw M4
Fork opening	10 mm
Smallest part typ.	2.0 mm

Optical data

Ambient light max.	5000 Lux
Beam characteristic	Divergent
Light type	Red light
Principle of optical operation	Through-beam sensor
Wave length	640 nm

Output/Interface

Switching output	PNP Normally open/Normally closed (NO/NC)
------------------	---

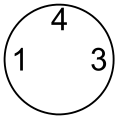
Range/Distance

Ripple max. (% of Ue)	10 %
-----------------------	------

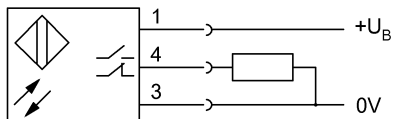
Remarks

Order accessories separately.
For additional information, refer to user's guide.
Factory default setting for switching output: Normally open.
Reference object (target): Steel plate, 50 x 50, thickness 0.5 mm, lateral approach.
The sensor is functional again after the overload has been eliminated.
Only for applications per NFPA 79 (machines with a supply voltage of maximum 600 V). Use an R/C (CYJV2) cable with suitable properties for attaching the device.

Connector view



Wiring Diagram



Symbols for Optoelectronic Sensors

