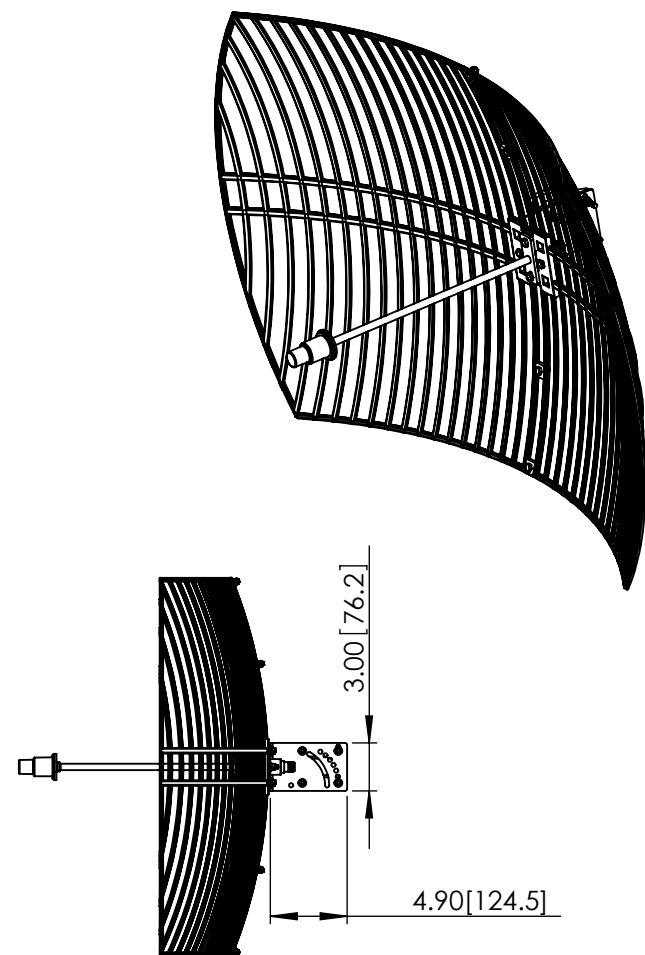
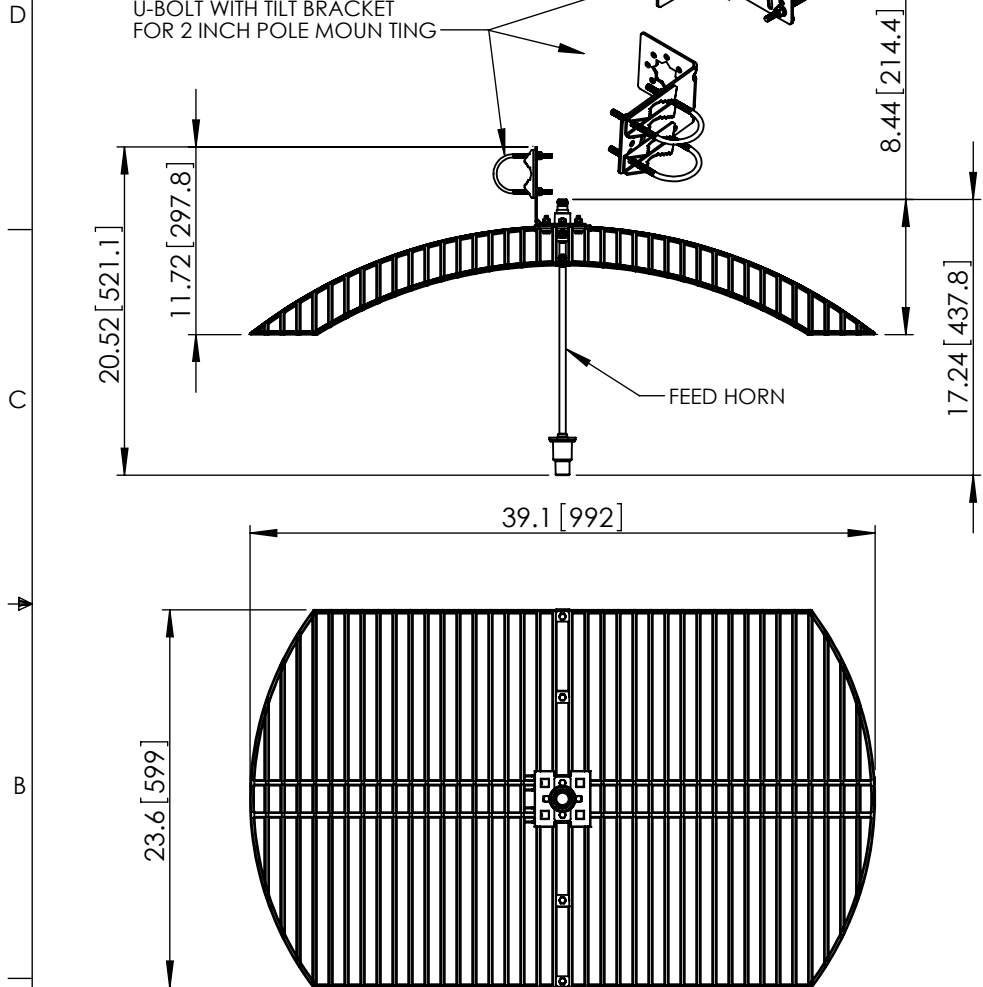



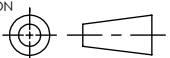
THE INFORMATION CONTAINED IN THIS DRAWING IS THE SOLE PROPERTY OF L-COM, INC. ANY REPRODUCTION IN PART OR WHOLE WITHOUT THE WRITTEN PERMISSION OF L-COM, INC. IS PROHIBITED.

REVISIONS			
REV	DESCRIPTION	DATE	APPROVED
A	INITIAL RELEASE	10/18/12	D.GRIFFIN



RoHS Compliant ✓

NOTES:  
PACKAGING:  
COMPONENT SHALL BE PACKAGED IN ACCORDANCE WITH L-COM SPEC PKG-0001  
- ALL DIMENSIONS FOR REFERENCE ONLY -

UNLESS OTHERWISE SPECIFIED, DIMENSIONS ARE IN INCHES [mm]  DIMENSIONAL TOLERANCES:  .X = ±.1 .XX = ±.01 .XXX = ±.005  ANGULAR TOLERANCES:  ALL = ± 1°	APPROVALS	DATE	 45 BEECHWOOD DRIVE NORTH ANDOVER, MA 01845	
	DRAWN BY B.PUCHASKI	10/15/12		
	CHECKED BY P.PESA	10/15/12	CATEGORY	
	APPROVED BY P.PESA	10/15/12	ANTENNA	
	CONFIGURATION DETAILS OF UNDIMENSIONED FEATURES MAY VARY		PRODUCT DESCRIPTION	
			5.8 GHz 29 dBi GRID ANTENNA WITH N-FEMALE CONNECTOR	
			SIZE	FSCM NO.
			SCALE: NONE	CAD FILE: HG5829EG.SLDDRW
PROJECTION		COLOR VARIATIONS MAY OCCUR	DWG. NO.	REV.
			HG5829EG	A
			SHEET 1 OF 1	