

Eaton 9PX UPS

Reliable, versatile and efficient backup power for IT equipment, including Cisco switches and servers

Eaton 9PX features and benefits

Reliability: With extended battery runtime options, hot-swappable batteries, internal bypass and optional maintenance bypass, the 9PX maximizes the availability of your IT systems.

More power: The 9PX allows you to connect more devices by providing up to 28 percent more wattage compared to traditional UPSs.

Efficiency: The double-conversion online 9PX is the most efficient UPS in its class with up to 93 percent efficiency rating in normal mode. [Split-phase models offer both 120V and 208V output without a transformer; saving vertical rack \(U\) space, weight and cost.](#)

Increased battery life: Eaton® offers ABM® technology that increases battery service life by 50 percent. ABM uses an advanced, three-stage charging technique and closely monitors battery health to provide advanced notice when batteries need replacement.

Intuitive LCD interface: Eaton's next-generation intuitive LCD interface offers a graphical display that provides all critical UPS information in a single view. The user-friendly menu allows you to view information and control settings with the push of a button.

Intelligent Power Software Suite

By integrating the bundled Intelligent Power® Software Suite (IPSS), you can monitor and manage your network power devices. IPSS enables you to:

- Seamlessly integrate with VMware's vCenter™ Server™ virtualization management solution, as well as virtualization platforms such as Citrix® XenServer, Microsoft SCVMM™, Red Hat® and other Xen® open source platforms
- Initiate live migration of virtual machines (VMs) to automatically and transparently migrate them during power disruptions to unaffected devices with systems such as VMware vMotion™ and Microsoft Live Migration
- Gracefully shutdown computers, VMs and host servers during an extended power outage

To learn more, please visit: Eaton.com/intelligentpower

Services and support

Eaton provides 24x7 product support. From battery replacement to full UPS service plans, Eaton has one of the top service models in the industry.



The Eaton 9PX is an ENERGY STAR® qualified UPS. ENERGY STAR is intended to help consumers save money and protect the environment through energy efficient products and practices.



Versatile configurations

The 9PX has the versatility to meet the demands of a wide array of IT applications.



Each 9PX includes a 4-post rail kit.



Split-phase models incorporate flexible receptacle configurations that natively offer both 208 and 120 volt. Rear panel of 9PX 6K split-phase shown above.

Graphical LCD interface

With an LCD interface that tilts 45 degrees for optimal viewing, rotates to match rack and tower installations, and provides clear information on UPS status and measurements, the 9PX makes local management easy.



The 9PX displays key data such as its up to 93 percent efficiency rating, alarm history, runtime remaining, load percentage and more in a graphical format.



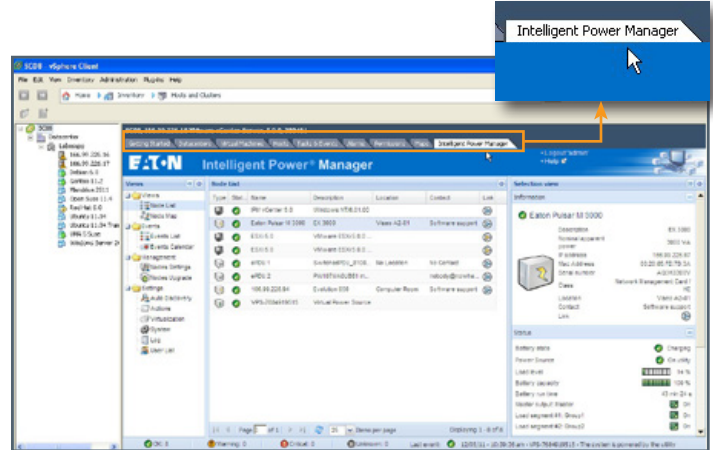
The 9PX provides line and match EBMs for extended runtime.

Virtualization-ready UPS

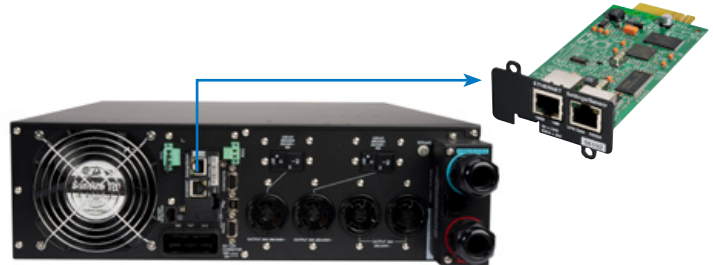
Every 9PX comes with the Network Card-MS and IPSS, allowing seamless integration into the following industry-leading virtualization platforms:



Microsoft Partner Network



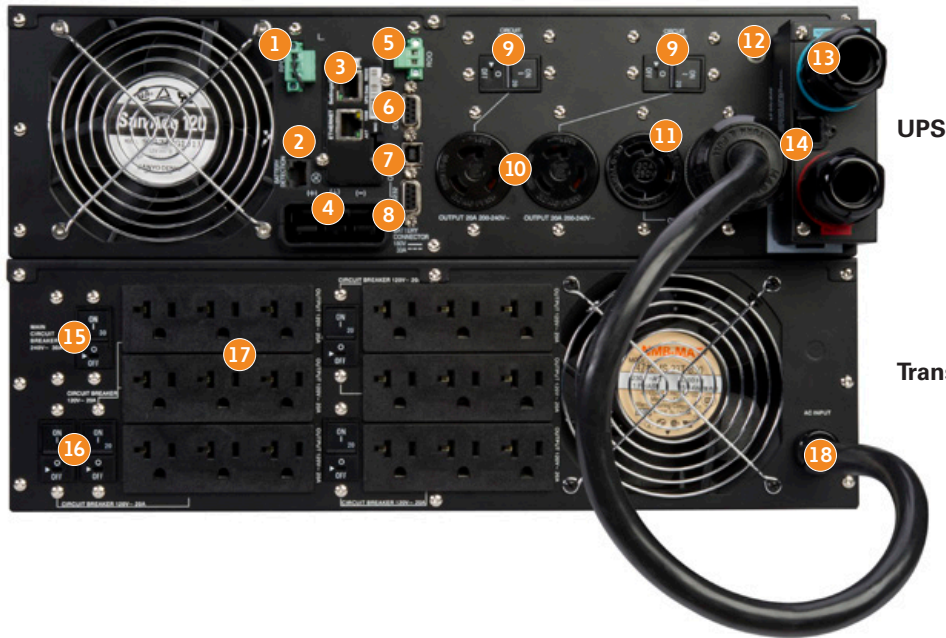
Intelligent Power Manager plugs into VMware's vCenter dashboard.



The bundled Network Card-MS allows the 9PX to connect to an Ethernet network and the Internet, supporting real-time monitoring and control of UPSs across the network via a standard Web browser, SNMP-compliant network management system or power management software.

Rear panel overview

Model 9PX6KTF5 (6kVA, 120/208V output)



- 1 Remote Power Off (RPO)
- 2 EBM detection port
- 3 Network Card-MS (bundled with UPS)
- 4 EBM connector
- 5 Remote On/Off (ROO)
- 6 Output relay contact – DB-9 dry contact (common alarm as standard).
- 7 USB port (cable included)
- 8 RS-232 serial communication port (cable included)
- 9 Output circuit breaker protection
- 10 (2) L6-20R
- 11 (2) L6-30R
- 12 Ground bonding screw
- 13 6-foot line cord with L6-30P

Model 9PX10KSP (10kVA, 120/208V output)



- 15 30A main circuit breaker
- 16 (4) 20A circuit breakers
- 17 (18) 5-20R outlets (accommodates 5-20P and 5-15P)
- 18 L6-30P input cord
- 19 (2) L14-30R
- 20 (1) L6-30R



To interact with the 9PX and see additional configurations up close, please visit Eaton.com/9PX.

9PX model selection guide

The 9PX UPS is pre-configured into bundles for easy Configuration and deployment. For complete specifications, including interactive battery runtime graphs, please visit Eaton.com/9PX.

9PX SP 6-10 kVA rack/tower: 120/208 output, 50/60 Hz

Catalog number	Rating (VA/Watts)	Input	Output	Dimensions (HxWxD, in.)	Weight (lb.)
9PX6KSP	5500/4900****	L14-30P***	(1) L14-30R, (1) L6-30R, (6) 5-20R, HW	6.8 (4U) x 17.3 x 25.6	157.3
9PX8KSP	8000/7200	Hardwired	(2) L14-30R, (1) L6-30R, HW	10.3 (6U) x 17.3 x 27.6	225
9PX10KSP	10000/9000	Hardwired	(2) L14-30R, (1) L6-30R, HW	10.3 (6U) x 17.3 x 27.6	225

UPS and EBM ship with a 4-post rail kit, 9RK. *Terminal block with L14-30P cord. ****6K models derated at 100/200, 120/208, 110/220V (see technical specs).

Extended battery modules: 6-10kVA Split-phase

Catalog number	Description	Dimensions (HxWxD, in.)	Weight (lb.)
9PXEBM240SP	6K SP EBM (add up to 4 EBMs), Use with 9PX6KSP UPS	5.1 (3U) x 17.3 x 26.6	132
EBMCBL240SP	9PX EBM Cable Extension 6kVA Split-Phase, 6 feet (1.8 meters)		
9PXEBM360SP	8/10K EBM (add up to 4 EBMs) Use with 9PX8KSP, 9PX10KSP UPS	5.1 (3U) x 17.3 x 25.4	163
EBMCBL360SP	9PX EBM Cable Extension 8/10kVA Split-Phase, 6 feet (1.8 meters)		

9PX 5-11 kVA 208V output, 50/60 Hz bundles

Catalog number	Rating (VA/watts)	Input	Output	Dimensions (HxWxD, in.)*	Weight (lb.)
9PX5K	5000/4500	L6-30P**	(2) L6-30R, (2) L6-20R, Hardwired	5.1 (3U) x 17.3 x 28.4	106
9PX6K	6000/5400	L6-30P**	(2) L6-30R, (2) L6-20R, Hardwired	5.1 (3U) x 17.3 x 28.4	106
9PX6KG	6000/5400	Hardwired	(2) C19, (8) C13, Hardwired	5.1 (3U) x 17.3 x 27.0	106
9PX8KHW	8000/7200	Hardwired	Hardwired	10.2 (6U) x 17.3 x 27.6	190
9PX8K	8000/7200	Hardwired	Hardwired, (3) L6-30R	10.2 (6U) x 17.3 x 30.0	205
9PX11KHW	11000/10000	Hardwired	Hardwired	10.2 (6U) x 17.3 x 27.6	190
9PX11K	11000/10000	Hardwired	Hardwired, (3) L6-30R	10.2 (6U) x 17.3 x 30.0	205

9PX 5-11 kVA 120/208V output, 50/60 Hz bundles

Catalog number	Rating (VA/watts)	Input	Output	Dimensions (HxWxD, in.)*	Weight (lb.)
9PX5KTF5	5000/4500	L6-30P**	(1) L6-30R, (2) L6-20R, (18) 5-20R, Hardwired	10.2 (6U) x 17.3 x 28.4	201
9PX5KP1	5000/4500	L6-30P	(1) L14-30R, (1) L6-30R, (6) 5-20R	10.2 (6U) x 17.3 x 28.4	203
9PX5KP2	5000/4500	Hardwired	Hardwired	10.2 (6U) x 17.3 x 28.4	201
9PX6KTF5	6000/5400	L6-30P**	(1) L6-30R, (2) L6-20R, (18) 5-20R, Hardwired	10.2 (6U) x 17.3 x 28.4	201
9PX6KP1	6000/5400	L6-30P	(1) L14-30R, (1) L6-30R, (6) 5-20R	10.2 (6U) x 17.3 x 28.4	203
9PX6KP2	6000/5400	Hardwired	Hardwired	10.2 (6U) x 17.3 x 28.4	201
9PX8KTF5	8000/7200	Hardwired	Hardwired, (2) L6-30R, (18) 5-20R	15.3 (9U) x 17.3 x 30.0	300
9PX11KTF5	11000/10000	Hardwired	Hardwired, (2) L6-30R, (18) 5-20R	15.3 (9U) x 17.3 x 30.0	300
9PX11KTF11	11000/10000	Hardwired	Hardwired, (2) L14-30R, (8) 5-20R	15.3 (9U) x 17.3 x 27.6	377

*Each module of every 9PX bundle ships with a 4-post rail kit. **Terminal block with L6-30P cord.

Extended battery modules (EBM) and accessories: 5 and 6kVA

Catalog number	Description	Dimensions (HxWxD, in.)	Weight (lb.)
9PXEBM180RT	EBM; includes 4-post rail kit, quick start guide, joining brackets for tower configuration and 1-foot connector cable; add up to 4 EBMs	5.1 (3U) x 17.3 x 25.4	150
EBMCBL180	9PX EBM Cable Extension 5 and 6 kVA UPS models, 6 feet (1.8 meters)		
CBLADAPT180	Adapter cable from Eaton 9135/MX UPS EBM to 5 and 6 kVA 9PX UPS models		

Extended battery modules (EBM) and accessories: 8 and 11kVA

9PXEBM240RT	EBM; includes 4-post rail kit, quick start guide, joining brackets for tower configuration and 1-foot connector cable. Add up to 5 EBMs with UPS; add up to 12 EBMs with SC240RT	5.1 (3U) x 17.3 x 25.4	143
SC240RT	240V supercharger module to add up to 12 EBMs to 8 and 11 kVA 9PX UPS models. Includes 4-post rail kit.	5.1 (3U) x 17.3 x 26.8	34
EBMCBL240	Cable Extension 8 and 11 kVA UPS models, 6 feet (1.8 meters)		
CBLADAPT240	Adapter cable from 9135, MX and EX RT UPS EBMs to 8 and 11 kVA 9PX UPS models		

Power distribution & bypass

Catalog number	Description	Compatible 9PX models	Input	Output	Dimensions (HxWxD, in.)	Weight (lb.)
MBP6K208	208V maintenance bypass module	All non split-phase 5 and 6 kVA models	L6-30P	(2) L6-30R	3U rackmount	9
MBP11K208	208V maintenance bypass module	All non split-phase 8 and 11 kVA models	Hardwired	Hardwired, (3) L6-30R	Rear-mount	15
PW105BA2U420	Basic ePDU	9PX5K, 9PX6K, 9PX5KTF5, 9PX6KTF5, 9PX6KP1, 9PX8KTF5, 9PX8K, 9PX11KTF5, 9PX11K	L6-30P	(4) L6-20R	3.5 (2U) x 19.0 x 6.0	10
ePBZ79	Basic ePDU	9PX5K, 9PX6K, 9PX5KTF5, 9PX6KTF5, 9PX6KP1, 9PX8KTF5, 9PX8K, 9PX11KTF5, 9PX11K	L6-30P	(16) C13, (4) C19	1.7 (1U) x 17.0 x 5.1	6
PW105BA0U421	Basic ePDU	9PX5KP1, 9PX6KP1, 9PX11KTF11	L14-30P	(24) 5-20R	66.0 (0U) x 1.89 x 2.0	10
PW105BA2U422	Basic ePDU	9PX5KP1, 9PX6KP1, 9PX11KTF11	L14-30P	(4) L6-20R	3.5 (2U) x 19.0 x 6.0	10

Other hardware accessories

Catalog number	Description	Dimensions (HxWxD, in.)	Weight (lb.)
RK2PC	2-post rail kit for 5 and 6 kVA 9PX models	Fits 2-post racks	5
BINTSYS	Battery integration system and caster kit	7.9 x 20.5 x 31.5	30

Eaton
Electrical Sector
1111 Superior Avenue
Cleveland, OH 44114 USA
Eaton.com

© 2013 Eaton
All Rights Reserved
Printed in USA
9PX01FXA
December 2013

To interact with the 9PX UPS,
please visit: Eaton.com/9PX

Eaton is a registered trademark of Eaton.
All other trademarks are property of their respective owners.

ENERGY STAR and the ENERGY STAR mark are registered U.S. marks. ENERGY STAR is a registered mark owned by the U.S. government.