

## Sample set - SAMPLE PTSM 0,5/ 2-2,5-H SMDWH - 1820929

Please be informed that the data shown in this PDF Document is generated from our Online Catalog. Please find the complete data in the user's documentation. Our General Terms of Use for Downloads are valid (<http://phoenixcontact.com/download>)



PCB terminal block, Nominal current: 6 A, Nom. voltage: 160 V, Pitch: 2.5 mm, Number of positions: 2, Connection method: Push-in spring connection, Mounting: Taped SMD/THT/THR components, Conductor/PCB connection direction: 0 °, Color: white


The illustration shows the 3-pos. version

### Why buy this product

- Compact low-profile SMD PCB terminal block with 2.5 mm pitch
- High current carrying capacity for high power transmission
- Supplied in tape-on-reel packing according to IEC 60286-3 for automated mounting
- Rugged solder anchor for secure, mechanical fixing to the surface
- Specifically designed for use in dedicated SMT processes



### Key Commercial Data

Packing unit	5 pc
Minimum order quantity	5 pc
GTIN	 4 046356 787598
Weight per Piece (excluding packing)	1.05 g
Custom tariff number	85369010
Country of origin	India

### Technical data

Product type	Printed circuit board terminal
Rated voltage (IEC)	160
Rated current (IEC)	6
Mounting type	Taped SMD/THT/THR components
Number of positions	2
Pitch	2.5 mm
Levels	single-level
Connection cross section	0.5

# Sample set - SAMPLE PTSM 0,5/ 2-2,5-H SMDWH - 1820929

## Technical data

Connection method	Push-in spring connection
-------------------	---------------------------

## Classifications

### eCl@ss

eCl@ss 4.0	27141109
eCl@ss 4.1	27141109
eCl@ss 5.0	27141190
eCl@ss 5.1	27141190
eCl@ss 6.0	27261101
eCl@ss 7.0	27440401
eCl@ss 8.0	27440401

### ETIM

ETIM 3.0	EC001121
ETIM 4.0	EC002643
ETIM 5.0	EC002643

### UNSPSC

UNSPSC 6.01	30211801
UNSPSC 7.0901	39121432
UNSPSC 11	39121432
UNSPSC 12.01	39121432
UNSPSC 13.2	39121432

## Accessories

### Accessories

#### Screwdriver tools

Screwdriver - SZS 0,4X2,0 - 1205202



Micro screwdriver, bladed, size: 0.4 x 2.0 x 60 mm, 2-component grip, with non-slip grip and twist cap

## Additional products

# Sample set - SAMPLE PTSM 0,5/ 2-2,5-H SMDWH - 1820929

## Accessories

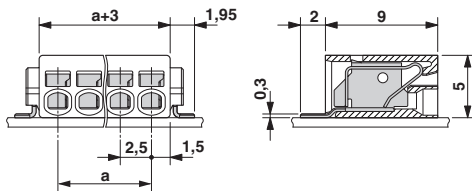
PCB terminal block - PTSM 0,5/ 2-2,5-H SMD WH R24 - 1814634



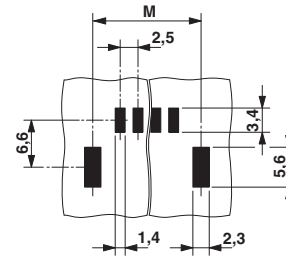
PCB terminal block, Nominal current: 6 A, Nom. voltage: 160 V, Pitch: 2.5 mm, Number of positions: 2, Connection method: Push-in spring connection, Mounting: Taped SMD/THT/THR components, Conductor/PCB connection direction: 0 °, Color: white

## Drawings

Dimensional drawing



Drilling diagram



Diagram

